

7. TOWING HITCHES FOR TOWING VEHICLES

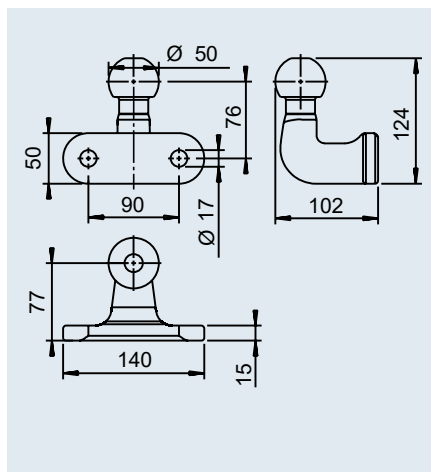
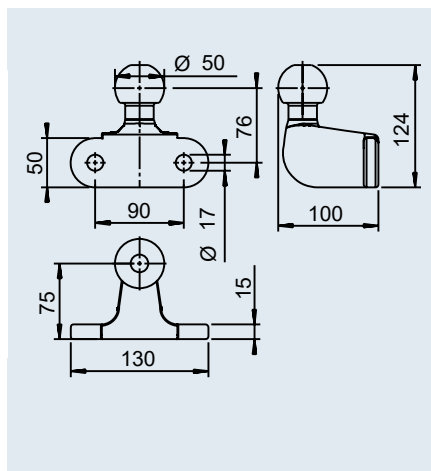


TOWING HITCHES FOR TOWING VEHICLES

AL-KO towballs	388
WINTERHOFF couplings	388
AL-KO / WINTERHOFF accessories	389
BRADLEY towing hitches	390 – 395
Universal hitches from Bradley	396 – 397
Universal hitches from Dixon-Bate	398 – 399
Universal stabilisers from Dixon-Bate	400 – 401
Coupling mouths from Bradley	402
Coupling mouths from Dixon-Bate	403
Bradley AutoJaw	404 – 405
Height-adjustable holders from Dixon-Bate	406 – 407
Pintles from Dixon-Bate	408 – 409
Dixon-Bate Shocklink	410 – 411
Accessories / replacement parts	412

TOWBALL Ø 50

2-hole



Towball Ø 50 - BC 75 / 200

SAP: KUPLNGSKUGEL BC75/200

Part no.	1 275 101
Perm. trailer load	Max. 3,500 kg
Nose load	200 kg
D/Dc value	17.0 kN
ECE type approval no.	E2 55R-01 12208
Range of applications	Off-road vehicles, vans Important: Cannot be used in conjunction with an AKS
	2.0 kg
	-

Towball UN 252 D

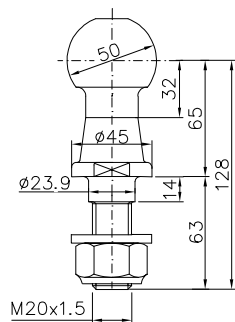
SAP: KUPP KUG MIT FLANSCH UN252D ECE-R55

Part no.	1 202 305
Perm. trailer load	Max. 3,500 kg
Nose load	150 kg
D/Dc value	17.0 kN
ECE type approval no.	E13 55R-01 4042
Range of applications	Off-road vehicles, vans Important: Suitable for AKS
	2.0 kg
	-

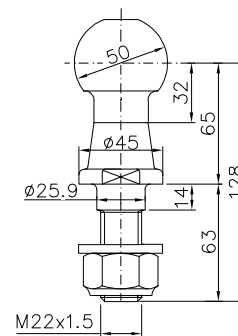
WINTERHOFF COUPLING



KUB 50-2000 KG



KUB 50-3500 KG



	Part no.	Trailer load	Ball diam.	D/Dc value				
KUB 50-2000 KG ¹⁾	1860520 (W1610)	2,000 kg	50 mm	18.5 kN	1.11 kg	1,000	-	12
KUB 50-3500 KG ²⁾	1860683 (W1620)	3,500 kg	50 mm	31.0 kN	1.11 kg	1,000	-	12

¹⁾ ECE R55-No. 55R-011525 E1

²⁾ ECE R55-No. 55R-010809 E1

ACCESSORIES



Soft-Ball

SAP:	SOFT-BALL RAL3000 FEUERROT	SOFT-BALL RAL9011-SCHWARZ	SOFT-BALL RAL5002-BLAU	SOFT-BALL RAL9006 ALUMINIUMWEISS
Part no. unit for towing hitch	605 307 with 50 mm ball	1 310 913 with 50 mm ball	1 337 726 with 50 mm ball	1 651 589 with 50 mm ball
Colour	Red, similar to RAL 3000	Black, similar to RAL 9011	Blue, similar to RAL 5002	White aluminium, similar to RAL 9006
	0.055 kg	0.055 kg	0.055 kg	0.055 kg
SAP:	SOFT-BALL FEUERROT VE 24 STÜCK	SOFT-BALL SCHWARZ VE 24 STÜCK	SOFT-BALL BLAU VE 24 STÜCK	SOFT-BALL RAL 9006 VE 24 STÜCK
Part no. PU	247 095 (content 24 units)	1 211 738 (content 24 units)	1 222 223 (content 24 units)	1 225 991 (content 24 units)
	1.6 kg	1.6 kg	1.6 kg	1.6 kg
	24 / -	24 / -	24 / -	24 / -

7



8 units in red



8 units in black



8 units in white aluminium

Soft-Ball

SAP: SOFT-BALL GEMISCHT VE 24 STÜCK

Part no. PU for towing hitch	1 225 992 (content 24 units) with 50 mm ball
Colours mixed	Red, black, white aluminium
	1.6 kg
	24 / -

WINTERHOFF

BALL CAP



BALL CAP-K24

24 units per box



	Part no.	suitable for				
BALL CAP	1860484 (W1640)	universally usable	0.06 kg	3,000	-	12
BALL CAP-K24	1860685 (W1641)	universally usable	1.40 kg	24	-	12

BRADLEY

The leading drawbar and towing hitch brand

The English company Bradley Doublelock is the leading supplier of high-quality and durable drawbars and towing hitches. The products can be used in all areas in which high durability and long service lives are crucial, e.g. in commercial use, in agriculture, on military vehicles and in public utility companies.

The Bradley brand stands for the highest standards of quality and safety, and has been extended by the Dixon-Bate hitch component product range, which has been characterised by its first-class quality for over 90 years.

The Bradley brand has always stood for outstanding designs, extreme durability, excellent longevity and high quality.

- | Trailer components: hitches, jockey wheels and stands
- | Towing hitches: coupling mouths, holders and pintles
- | Coupling accessories: large selection of coupling bolts, lanyards and further accessories for all coupling systems with type approval

The Bradley product portfolio

You benefit from Bradley's long-term development experience, because the extensive towing hitch, chassis component and replacement part product range has been designed for long service lives.



Trailer components



Towing hitches



Coupling accessories

Type approval and safety

All Bradley products comply with the highest standards of quality and safety: they have been tested for suitability, have European type approval, and comply with Directive ECE-R55-01.

The type approval confirms adherence to the minimum standards in terms of legal, technical and safety-related requirements.

You can therefore be sure that a product has been manufactured according to the highest technical quality standards.

Not all towing hitches that are available in Europe have type approval or comply with Directive ECE-R55-01. As a result, these products may be unsuitable for their intended use, and might not be covered by any insurance in the event of damage.

We therefore recommend that you seek advice to ensure that your coupling system has type approval. The sales team is available to provide advice, and can support you in selecting suitable products with type approval for your coupling system.

Manufacturer approved and certified according to BS EN ISO 9001:2000 and ISO 14001.



THE BRADLEY BRAND



Prize-winning quality and safety for over 90 years



Bradley Doublelock was founded as "H&K Bradley" in 1948, and quickly made a name for itself as a towing hitch manufacturer.

Since its foundation, the company has been committed to quality and innovation. Generations of customers have appreciated the high-quality design and high technical standard of all Bradley products, quickly establishing Bradley as the benchmark for towing hitches on the British market.

Bradley Doublelock is still focussed on quality and product innovation to date. This is the reason why the products are so successful. Present customers include both companies and public clients as well as end customers who trust in the high added value and reliability of Bradley products.

Dixon-Bate has been the market leader for coupling mouths and towing hitches for a long time, and enjoys an outstanding reputation for its high-quality premium products with their extraordinarily durable design.

Since taking over Dixon-Bate in 2009, these products have been rounding off Bradley's range. Dixon-Bate's products have stood for unsurpassed quality, extreme resilience and extreme longevity for over 90 years.

The entire Bradley and Dixon-Bate product range meets the highest quality standards and stringent safety requirements that are specified in the military sector. Bradley and Dixon-Bate are even making these demanding specifications the standard in the automotive industry, in shipping, in agriculture and in the leisure sector.

7

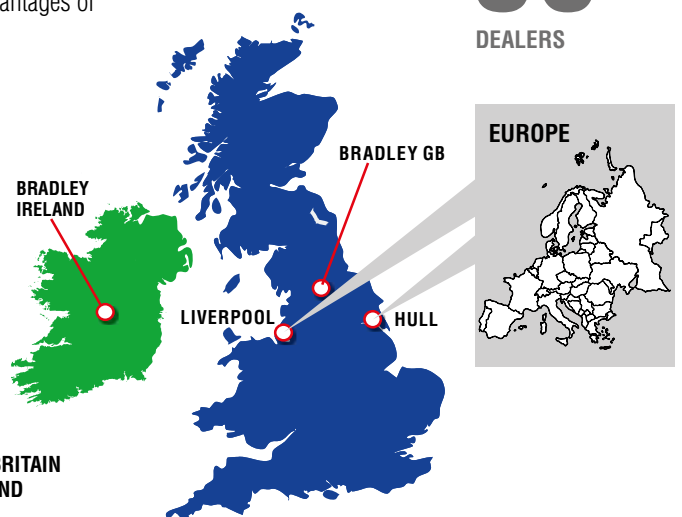
Bradley – a brand "Made in England"

Bradley's headquarters are located in the English county of West Yorkshire, which is renowned for its engineering skills. Many of the highest-quality technical products from Great Britain are produced in this region. There is a long tradition of developing and designing technical products there. Bradley combines this long-term experience with the advantages of cutting-edge production methods and robust designs that meet the most demanding of requirements.

Bradley has a sales office in Athlone (Co. Westmeath), Ireland. Customers from Ireland and Northern Ireland are therefore supported directly by the office in Athlone. Bradley operates a local warehouse so that components for trailers and towing vehicles can be shipped immediately.

Bradley brand products can be purchased from 86 dealers located in all regions throughout Great Britain and Ireland. Export markets can also be served and products shipped thanks to the proximity to the ports in Liverpool and Hull.

86
DEALERS



OFFICES
IN GREAT BRITAIN
AND IRELAND

COUPLING SYSTEMS

with type approval from Bradley

WHY SHOULD COUPLING SYSTEMS WITH TYPE APPROVAL BE USED?

All coupling systems that you use for your vehicle in Great Britain and Europe must have type approval.

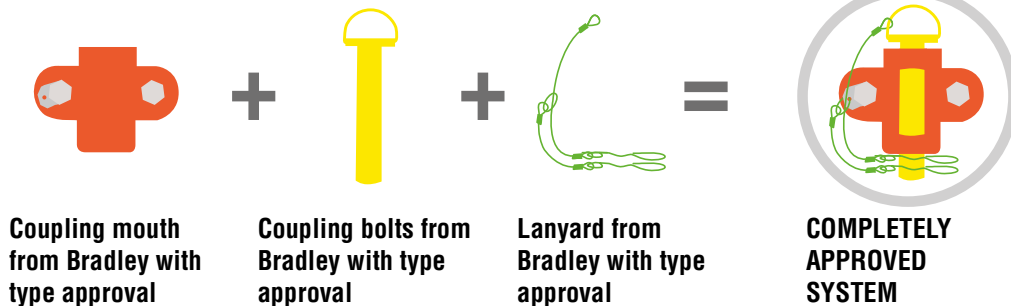
A "coupling system" consists of various drawbar components, each of which requires type approval for safe trailer operation. Only this enables you to ensure that a coupling system comprising various drawbar components is fully approved.

All Bradley products have type approval, thus guaranteeing optimal safety and maximum performance for diverse commercial uses and leisure applications.



EXAMPLE:

an approved coupling bolt and an approved lanyard are always required for a coupling mouth to comply with all statutory regulations in Great Britain.



Optimal safety

The towing hitches from Bradley meet the highest standards of safety and offer 100% reliability for coupling systems as well as maximum safety for the driver and the transported goods.



Maximum performance

Bradley has been the number 1 for towing hitches in Great Britain for over 90 years. Thanks to this long-term experience and expertise, Bradley's products stand out in each application area.



Fitness for purpose

The approved Bradley products are subjected to stringent tests and meet the highest of quality standards. They are therefore perfectly suitable for each intended application area.

Bradley towing hitches with type approval



UNIVERSAL HITCHES



STABILISERS



COUPLING MOUTHS



HEIGHT-ADJUSTABLE HOLDERS



PINTLES



SHOCKLINK



AUTOJAW

DIRECTIVE ECE-R55-01



Directive for products with type approval

Type approval 94/20/EC for towing hitches was replaced by Directive ECE-R55-01 on 1st November 2014. Since November 2014, all towing hitches and coupling systems must therefore meet the additional requirements of this directive.

Bradley was the first supplier in Great Britain whose products were tested according to its new directive and meet the statutory specifications. All products from Bradley are therefore fully approved and comply with the latest standards.

The directives for various coupling systems are complex and not easy to understand, which is why we recommend only using fully approved products from Bradley when seeking approval for your coupling system.



Service life tested over 2 million cycles

All products from Bradley are subjected to stringent tests so that they meet and surpass the type approval requirements.

These tests also include a service life test consisting of 2 million cycles. You can rely on the fact that all Bradley coupling systems meet the highest standards of quality and safety.



2-year warranty

All Bradley products come with a 2-year warranty for defects as of the date of purchase.



Delivery time 14 working days

CHOOSING THE RIGHT TOWING HITCH

Trailer load



The Bradley towing hitches are designed for various train weights, which are indicated using symbols in this brochure. To ensure a safe and approved product, a product with the correct train weight must be selected for your coupling system.

Mounting with two or four bolts



All hitch components from Bradley are pre-drilled for mounting on drawbars using two or four bolts.

The number of bolts is indicated with these symbols. Both mounting types comply with the British standards and Directive ECE-R55-01.

QUALITY AND SAFETY STANDARDS

Throughout the entire production process, Bradley is committed to meeting the highest standards of quality and safety.

Thanks to cutting-edge 3D CAD workstations, ultra-precise production and our long-term experience and expertise in development and manufacturing, Bradley is the leading supplier of towing hitches in Great Britain.

All towing hitches from Bradley comply with (and actually surpass) the specified statutory requirements in Great Britain. The products' service life is additionally tested over 2 million cycles. The products come with a 2-year warranty.

Check list for type approval

Check the following to select the right towing hitch with type approval:

- ✓ Check whether the products comply with Directive ECE-R55-01 (from 1st November 2014).
- ✓ Make sure that the train weight and fastenings are suitable for your coupling system.
- ✓ Check whether each towing hitch component has type approval. (Do not, for example, combine a coupling bolt without type approval and an approved coupling mouth).



Experienced design engineers use the latest 3D CAD programs to plan, develop and test new prototypes.



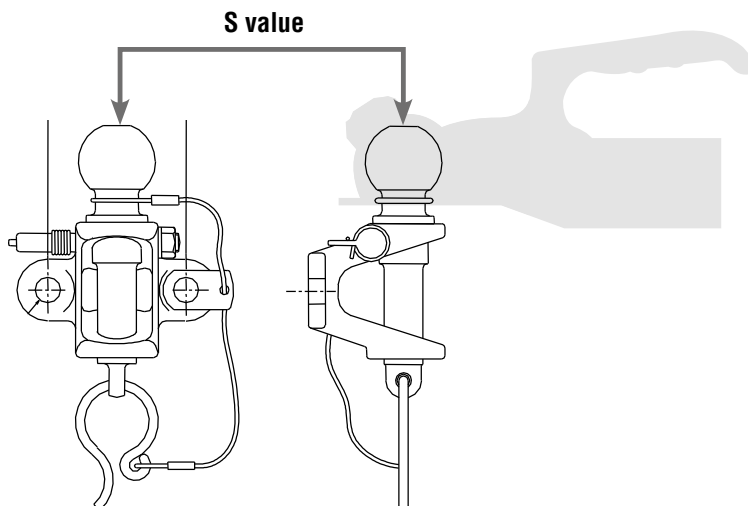
Investments in modern production systems, CNC machines and laser cutting systems ensure that Bradley products are always manufactured according to the latest technology.

EXPLANATION OF THE S VALUES

The technically correct term for the nose load is the "S value" or "static vertical mass".

The S value is the load, weight or mass that is transferred via the trailer's or caravan's coupling head onto the towball/drawbar fastened to the towing vehicle.

Before buying a towing hitch, you must know or calculate the S value to ensure that your vehicle combination (i.e. towing vehicle and trailer) complies with the safety regulations of the specified statutory requirements.



How high is the maximum S value?

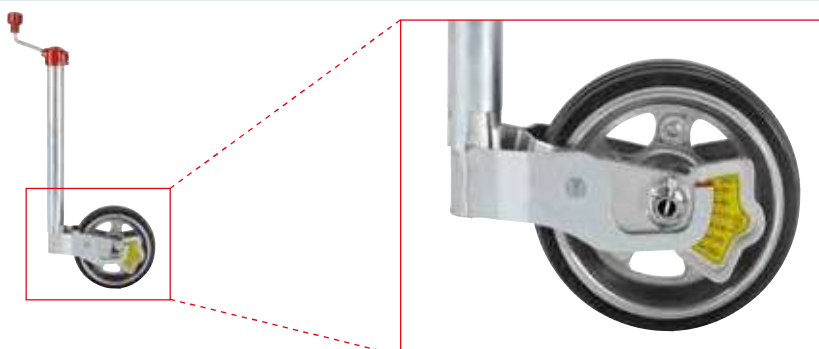
The maximum S value or the nose load can be found in the vehicle owner's manual.

The vehicle owner's manual may possibly use a different technical term such as "maximum static vertical load on the towball" or a different description for the S value.

If you do not know the S value for your vehicle, contact your vehicle manufacturer to find out the maximum S value for your vehicle.

AL-KO Premium jockey wheel (part no. 1221695)

Note: devices containing a measuring device for determining the nose load are available; this can e.g. be integrated in the jockey wheel.

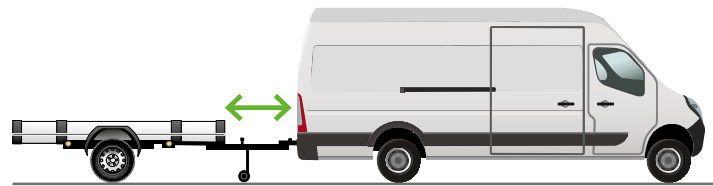


EXPLANATION OF THE D VALUES



The D value is specified in kilonewtons (kN), and indicates the dynamic load limits between the towing vehicle and a trailer, i.e. the horizontal force between the towing vehicle and trailer.

Before buying a towing hitch, you must know or calculate the D value so that your overall coupling system retains its approval.



D VALUE
30.95 kN

All of our products' D values are clearly indicated in this catalogue.

Calculating the D value

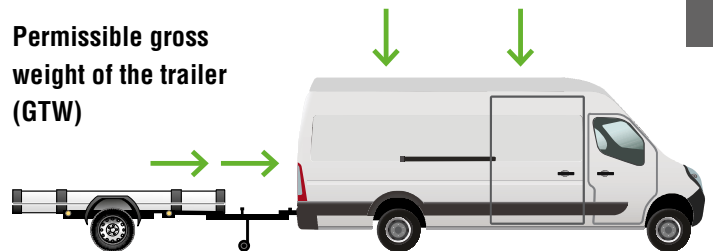
To calculate the D value, you require the following information from your vehicle manufacturer:

- I The permissible gross weight of the towing vehicle (GVW), which may also be called the "officially permissible gross weight"
- I The permissible gross weight of the trailer (GTW)

Permissible gross weight of the towing vehicle (GVW)

7

Permissible gross weight of the trailer (GTW)



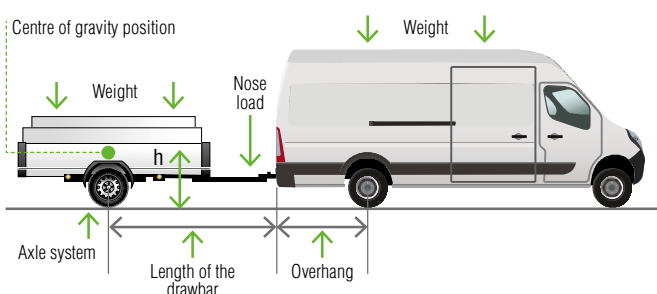
The D value is calculated as follows:

$$\frac{GVW \times GTW}{GVW + GTW} \times \frac{9.81 \text{ kg/ms}^2}{1,000} = D$$

Example: Ford Transit (GVW = 2,500 kg, GTW = 3,500 kg):

$$\frac{2,500 \text{ kg} \times 3,500 \text{ kg}}{2,500 \text{ kg} + 3,500 \text{ kg}} \times \frac{9.81 \text{ kg/ms}^2}{1,000} = \mathbf{14.3 \text{ kN}}$$

Criteria for an optimal and safe towing hitch



Vehicle

1. High weight
2. Long wheelbase
3. Small overhang
4. Correct tyre pressure
5. Correctly functioning shock absorbers

Trailer

1. Low weight
2. Long drawbar
3. Low centre of gravity
4. Use of the max. permissible nose load
5. Large tyres
6. Optimum loading (heavy items close to the axle)

UNIVERSAL HITCHES

from Bradley



The universal hitches from Bradley are perfect for mixed trailer fleets, and meet the highest safety requirements.

The universal Bradley hitches consist of a forged towball of robust design and a bolt. The stainless steel lanyard with nylon sheath offers improved cable securing and fixing, and prevents it from catching. The variants for fastening with 2 and 4 bolts are both equipped with a unique primary locking lever and a secondary locking pin to guarantee safe trailer operation.

FEATURES AND ADVANTAGES

- | Jam protection and minimal overhang
- | Compatible with standard British drawbar eyes 30/40/50 mm
- | Doublelock mechanism
- | Durable cast iron design with high corrosion resistance
- | All hitches meet the requirements of Directive ECE-R55-01

Universal 3.5 t hitch E40TC



D VALUE
17 kN

- | Bolt diameter: 25 mm
- | Ball diameter: 50 mm
- | Trailer load: 3.5 t
- | D value: 17 kN
- | Vertical load/S value: 200 kg
- | Drawbar eye: min. internal diam. 30 mm
- | 2-bolt mounting as per Directive ECE-R55-01

Bolts not included in scope of delivery – M16 bolts required.
Strength class 8.8 or higher required.



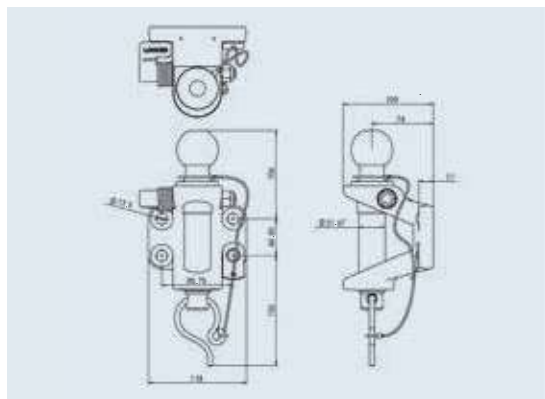
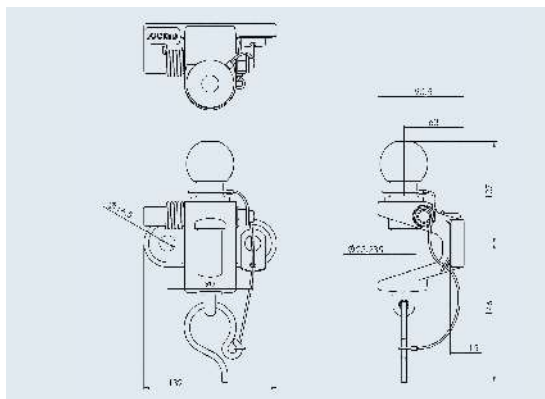
Universal 3.5 t hitch E100TC



D VALUE
30.95 kN

- | Bolt diameter: 32 mm
- | Ball diameter: 50 mm
- | Trailer load: 3.5 t
- | D value: 30.95 kN
- | Vertical load/S value: 350 kg
- | Drawbar eye: min. internal diam. 30 mm
- | 4-bolt mounting as per Directive ECE-R55-01

Bolts not included in scope of delivery – M16 bolts required.
Strength class 8.8 or higher required.



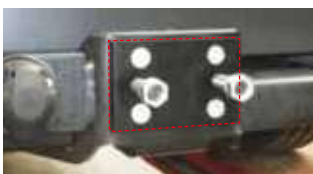
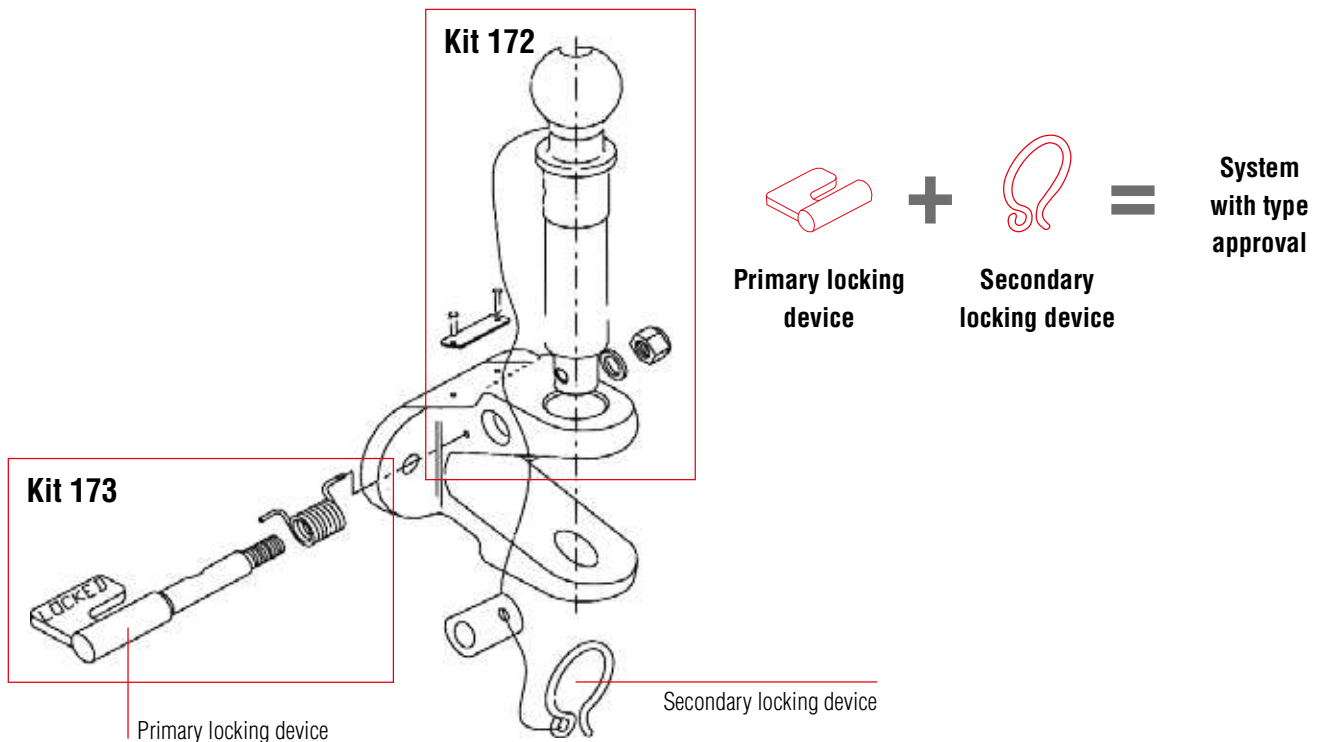
Part no.	Product
185007815 (Bradley V352L) SAP: ABSCHLEPPKUPPLUNG E40T 3500 KG	Universal 3.5 t hitch E40TC
Replacement part no.	
185012615 (Bradley Kit173) SAP: VERRIEGELUNGSGRIFF E40TC & E100TC	Locking handle
185005515 (Bradley Kit172) SAP: 25MM KUGELKOPF + SEIL + SPLINT E100TC	Ball pin & wire
185007915 (Bradley V35B) SAP: SCHRAUBEN SATZ E40T/TC	Bolt set (unit: inches)
185008015 (Bradley V35B-M16) SAP: SCHRAUBEN SATZ E40T/TC - M16	Bolt set (metric)

Part no.	Product
185008115 (Bradley V502L) SAP: ABSCHLEPPKUPPLUNG E100T 5000 KG	Universal 3.5 t hitch E100TC
Replacement part no.	
185012615 (Bradley Kit173) SAP: VERRIEGELUNGSGRIFF E40TC & E100TC	Locking handle
185012715 (Bradley Kit170) SAP: 32MM KUGELKOPF + SEIL + SPLINT E100TC	Ball pin & wire
185008215 (Bradley V50B) SAP: SCHRAUBEN SATZ E100T/TC	Bolt set (unit: inches)
185008315 (Bradley V50B-M12) SAP: SCHRAUBEN SATZ E100T/TC METRISCH	Bolt set (metric)



System with type approval

7



Adapter plate
Part no. 185013915 (Bradley 17898)

With this adapter plate, you can attach a European towball with 4 holes to a standard British fastening with 2 bolts (see illustration).

The adapter plate is approved as per Directive ECE-R55-01 for use with Bradley/Dixon-Bate components. The adapter plate is exclusively included in the scope of delivery of components for 2-bolt mounting. (In black only.)

NOTE: use only genuine parts and accessories from Bradley so that your system meets all legally specified requirements and can be approved.

UNIVERSAL HITCHES

from Dixon-Bate



All universal hitches from Dixon-Bate meet the highest requirements in terms of quality and longevity. They are therefore outstandingly suitable for commercial purposes. End customers can also fasten these hitches to their towing vehicles quickly.

The universal hitches consist of a separate 50 mm towball and a coupling bolt with a diameter of 25 mm. Manufactured from durable forged steel, the towball/bolt assembly has been one of the most popular products amongst commercial users for the past 20 years. The universal hitches from Dixon-Bate are available with or without a hardened coupling bolt.

FEATURES AND ADVANTAGES

- | Unique hitch with towball and coupling bolt
- | All hitches meet the requirements of Directive ECE-R55-01
- | Galvanised as well as transparent passivated surface
- | Class: A50-X/S

Universal 3.5 t hitch with 25mm bolt



- | Bolt diameter: 25 mm
- | Ball diameter: 50 mm
- | Trailer load: 3.5 t
- | D value: 17.2 kN
- | Vertical load/S value: 250 kg
- | Drawbar eye: min. internal diam. 28,6 mm
Maximum cross-section: 28.6 mm
- | 2-bolt mounting as per Directive ECE-R55-01



Bolts not included in scope of delivery.
Strength class 8.8 or higher required.

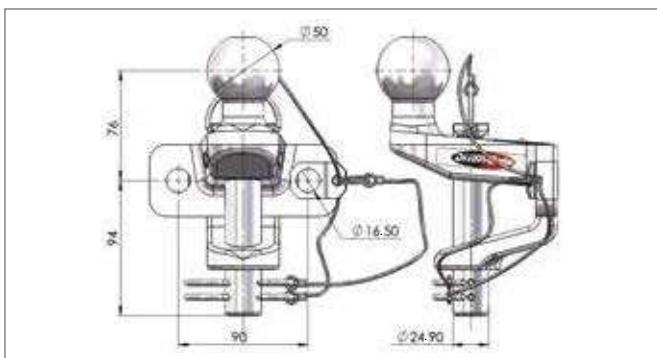
Universal 3.5 t hitch with hardened 25 mm bolt



- | Bolt diameter: 25 mm
- | Ball diameter: 50 mm
- | Trailer load: 3.5 t
- | D value: 17.2 kN
- | Vertical load/S value: 250 kg
- | Drawbar eye: min. internal diam. 28,6 mm
Maximum cross-section: 28.6 mm
- | 2-bolt mounting as per Directive ECE-R55-01



Bolts not included in scope of delivery.
Strength class 8.8 or higher required.



Part no.	Product
185002015 (Bradley DB202014) SAP: BALL & PIN 3500KG DIXON BATE	Universal 3.5 t hitch with 25 mm bolt
185009815 (Bradley DB201740) SAP: COUPLING 3.5T UNIV HARDPIN DB	Universal 3.5 t hitch with hardened 25 mm bolt (designed for 3,500 kg)

Replacement part no.	Product
185012815 (Bradley DB68121) SAP: 25 MM BOLZEN 3500KG + SICHERUNGSSET	25 mm standard bolt/ lanyard/strap/split pin
185012915 (Bradley DB68129) SAP: KETTE/LASCHE/SPLINT 3500KG	Lanyard/strap/split pin for 25 mm bolt (standard head and hardened bolt)
185013015 (Bradley DB67229) SAP: 25MM BOLZEN GEHÄRTET + SICHERUNGSSET	Hardened 25 mm bolt/ lanyard/strap/split pin



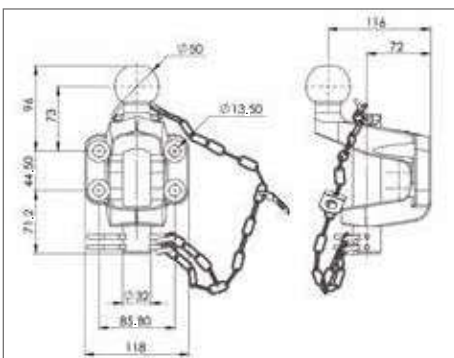
Universal 3.5 t hitch with 32 mm bolt



D VALUE
30.95 kN

- | Bolt diameter: 32 mm
- | Ball diameter: 50 mm
- | Trailer load: 3.5 t
- | D value: 30.95 kN
- | Vertical load/S value: 250 kg
- | Drawbar eye: min. internal diam. 50 mm
Maximum cross-section: 28.6 mm
- | 4-bolt mounting as per Directive ECE-R55-01

Bolts not included in scope of delivery.
Strength class 8.8 or higher required.



Adapter plate

Part no. 185013915 (Bradley 17898)

SAP: ADAPTER PLATE - 4 BOLT EURO TO 2 BOLT UK

With this adapter plate, you can attach a European towball with 4 holes to a standard British fastening with 2 bolts (see illustration).

The adapter plate is approved as per Directive ECE-R55-01 for use with Bradley/Dixon-Bate components. The adapter plate is exclusively included in the scope of delivery of components for 2-bolt mounting (on this page). (In black only.)

Part no.	Product
185008715 (Bradley DB201691) SAP: TOWING JAW / BALL 3.5T - DIXON BATE	Universal 3.5 t hitch with 32 mm bolt

Replacement part no.	Product
185013115 (Bradley DB67187) SAP: 32MM BOLZEN 5000KG + SICHERUNGSSET	32 mm bolt/chain/strap/split pin
185013215 (Bradley DB67221) SAP: KETTE/LASCHE/SPLINT 5000KG	Chain/strap/split pin set for 32 mm bolt

NOTE: use only genuine parts and accessories from Bradley so that your system meets all legally specified requirements and can be approved.

UNIVERSAL STABILISERS

from Dixon-Bate



The universal stabiliser is compatible with many stabilisation devices. With its forged steel components, it is designed for high load capacity and maximum longevity.

The hitch consists of a 50 mm towball and a hardened coupling bolt with a diameter of 25 mm in order to offer increased flexibility for various stabilisation devices and coupling devices. The components are manufactured from durable, forged steel.

The coupling bolt can be stored in the integrated bolt holder. The stainless steel lanyard with nylon sheath offers improved cable securing and fixing, and prevents it from catching.

FEATURES AND ADVANTAGES

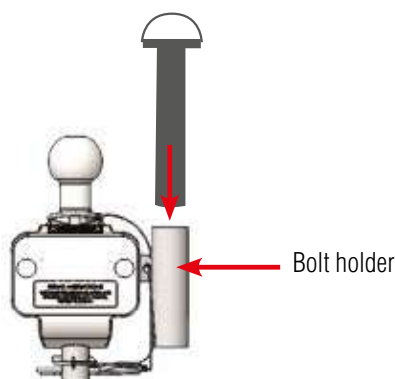
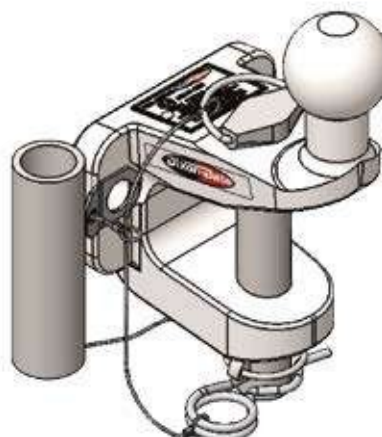
- Unique product designed specifically for stabilisation devices
- All hitches meet the requirements of the EU standard and Directive ECE-R55-01
- Galvanised as well as transparent passivated surface
- Class: A50-X/S

Universal 3.5 t stabiliser with hardened bolt



- Bolt diameter: 25 mm
- Ball diameter: 50 mm
- Trailer load: 3.5 t
- D value: 17.2 kN
- Vertical load/S value: 250 kg
- Drawbar eye: min. internal diam. 28,6 mm
Maximum cross-section: 28.6 mm
- 2-bolt mounting as per Directive ECE-R55-01

Bolts not included in scope of delivery.
Strength class 8.8 or higher required.



With this adapter plate, you can attach a European towball with 4 holes to a standard British fastening with 2 bolts (see illustration).

Adapter plate

Part no. 185013915 (Bradley 17898)

SAP: ADAPTER PLATE - 4 BOLT EURO TO 2 BOLT UK

The adapter plate is approved as per Directive ECE-R55-01 for use with Bradley/Dixon-Bate components. The adapter plate is exclusively included in the scope of delivery of components for 2-bolt mounting (on this page). (In black only.)

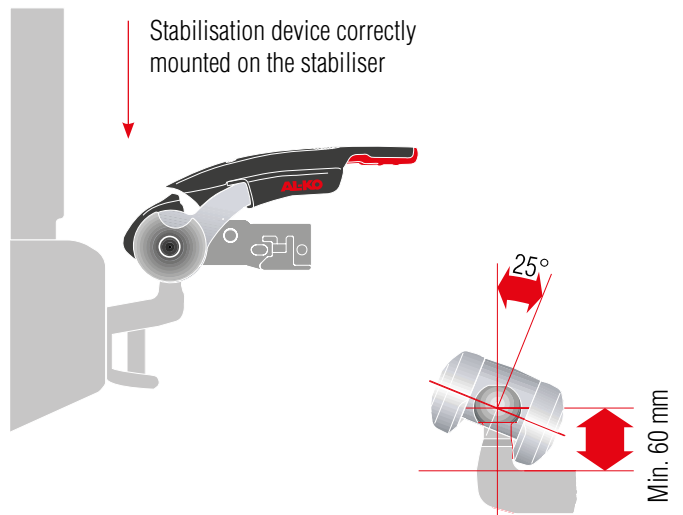
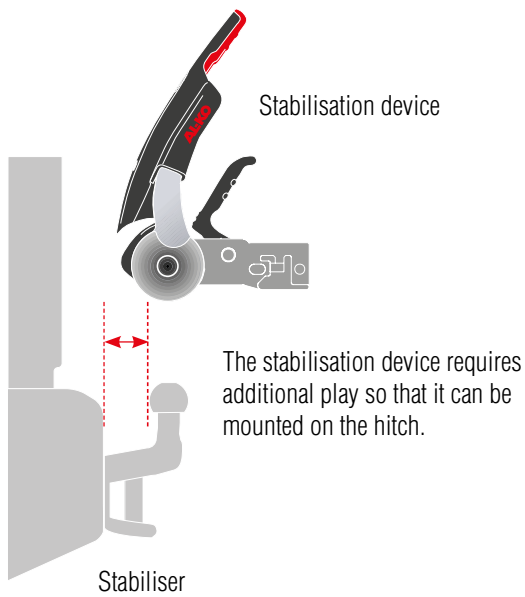
Part no.	Product	Replacement part no.	Product
185010015 (Bradley DB202116) SAP: KUPPLUNG 3,5T UNIVERSAL	Universal 3.5 t stabiliser with hardened 25 mm bolt (designed for 3.500 kg)	185013315 (Bradley DB68240) SAP: 25MM BOLZEN GEHÄRTET + HALTER	Hardened 25 mm bolt and holder for universal 3.5 t stabiliser

NOTE: use only genuine parts and accessories from Bradley so that your system meets all legally specified requirements and can be approved.



Developed specifically for use with stabilisation devices

7



The illustration shows the AL-KO AKS™ 3004 stabiliser.



COUPLING MOUTHS

from Bradley

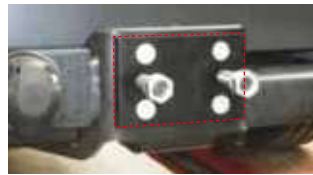


The coupling mouths from Bradley have been designed with a jam protection system to prevent blocking. They only have a minimum overhang. They are manufactured from durable, corrosion resistant cast iron, and are approved as per Directive ECE-R55-01.

All coupling mouths have a 2-year warranty and a service life tested over 2 million cycles.

FEATURES AND ADVANTAGES

- | Jam protection and minimal overhang
- | Compatible with standard British drawbar eyes 30/40/50 mm
- | Doublelock mechanism
- | Durable cast iron design with high corrosion resistance
- | Approved as per Directive ECE-R55-01



Adapter plate

See accessories for information

Part no. 185013915 (Bradley 17898)

SAP: ADAPTER PLATE - 4 BOLT EURO TO 2 BOLT UK

3.5 t coupling mouth E40T



D VALUE
17 kN



- | Bolt diameter: 25 mm
- | Trailer load: 3.5 t
- | D value: 17 kN
- | Vertical load/S value: 200 kg
- | Drawbar eye: min. internal diam. 30 mm
Maximum cross-section: 28.6 mm
- | 2-bolt mounting as per Directive ECE-R55-01

Bolts not included in scope of delivery.
M16 bolts required.

3.5 t coupling mouth E100T

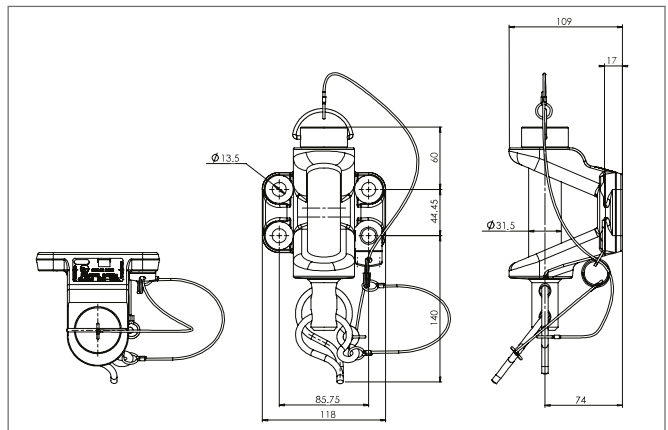
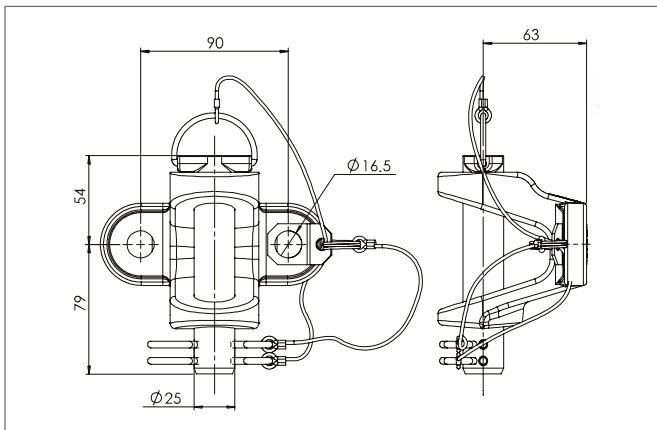


D VALUE
30.95 kN



- | Bolt diameter: 32 mm
- | Trailer load: 3.5 t
- | D value: 30.95 kN
- | Vertical load/S value: 350 kg
- | Drawbar eye: min. internal diam. 40 mm
Maximum cross-section: 28.6 mm
- | 4-bolt mounting as per Directive ECE-R55-01

Bolts not included in scope of delivery.
M12 bolts required.



Part no.	SAP	Product
185010115 (Bradley V351L)	JAW E40T 3500KG LESS BOLTS	Bradley 3.5 t coupling mouth E40T
185010215 (Bradley V501L)	JAW E100T 3500KG LESS BOLTS	Bradley 3.5 t coupling mouth E100T
185010315 (Bradley V354L)	JAW E40TC 3500KG LESS BALL	Bradley 3.5 t coupling mouth with locking pin
185010415 (Bradley V504L)	JAW E100TC 3500 KG LESS BALL	Bradley 3.5 t coupling mouth with locking pin

NOTE:

use only genuine parts and accessories from Bradley so that your system meets all legally specified requirements and can be approved.

COUPLING MOUTHS

from Dixon-Bate



The coupling mouths from Dixon-Bate offer the same high quality and trailer load (3.5 t) as those from Bradley. However, they are more suitable for coupling systems with S values of 250 kg.

The product is also available with a hardened coupling bolt. Both products are supplied with a 2-year warranty.

FEATURES AND ADVANTAGES

- I Durable, forged steel bolt. The stainless steel lanyard with nylon sheath offers improved split pin securing and fixing, and prevents it from catching.
- I Approved as per Directive ECE-R55-01
- I Galvanised as well as transparent passivated surface.
- I Class: A-S

3.5 t coupling mouth



- I Bolt diameter: 25 mm
- I Trailer load: 3.5 t
- I D value: 17.5 kN
- I Vertical load/S value: 250 kg
- I Drawbar eye: min. internal diam. 30 mm
Maximum cross-section: 30 mm
- I 2-bolt mounting as per Directive ECE-R55-01



3.5 t coupling mouth with hardened bolt



- I With hardened bolt with \varnothing 25 mm, designed for 3,500 kg
- I Type approval as per Directive ECE-R55-01

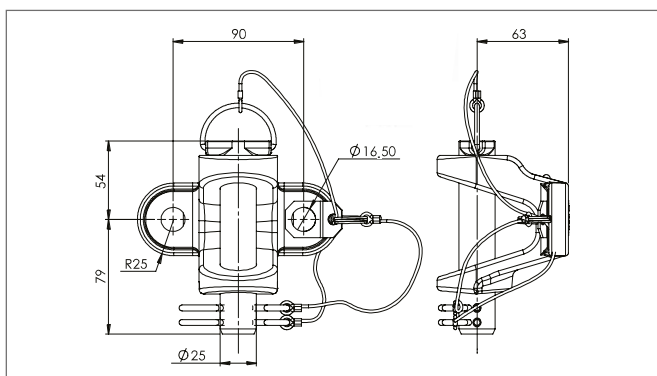


Adapter plate

See accessories for information

Part no. 185013915 (Bradley 17898)

SAP: ADAPTER PLATE - 4 BOLT EURO TO 2 BOLT UK



Part no.	Product	Replacement part no.	Product
185001715 (Bradley DB201661) SAP: JAW 3500KG DIXON BATE	3.5 t (17.5 kN) coupling mouth	185002615 (Bradley DB68169) SAP: BOLZEN 3500KG + SICHERUNGSSET	25 mm standard bolt/lanyard/split pin set
		185012915 (Bradley DB68129) SAP: KETTE/LASCHE/SPLINT 3500KG	Lanyard/split pin set for 25 mm bolts
185010515 (Bradley DB201756) SAP: JAW 3.5T HARDPIN DB	3.5 t (17.5 kN) coupling mouth with hardened bolt	185013415 (Bradley DB67228) SAP: 25MM BOLZEN GEHÄRTET + SEIL + SPLINT	Hardened 25 mm bolt/lanyard/strap/split pin
		185012915 (Bradley DB68129) SAP: KETTE/LASCHE/SPLINT 3500KG	Lanyard/split pin set for 25 mm bolts

BRADLEY AUTOJAW



Bradley AutoJaw is a semi-automatic, self-engaging hitch with which the trailer can be hitched with just one hand and that guarantees maximum safety for the driver.

The AutoJaw hitch combines all required hitch components. Coupling bolts cannot therefore be lost or mounted incorrectly. Nor do you run the risk of unintentionally using a coupling bolt without type approval for trailer operation.

The AutoJaw hitch automatically engages in the trailer's drawbar eye when the towing vehicle backs up to the trailer. The hitch is designed so that it is automatically engaged and locked when hitching. Towing the trailer without completely locking the AutoJaw hitch from Bradley beforehand is not possible. As the Bradley AutoJaw hitch can only be engaged and locked completely, reliability and safety are always guaranteed during trailer operation.

The Bradley AutoJaw hitch is also equipped with a locking device that can be used together with the standard round cylinder lock from Bradley.

FEATURES AND ADVANTAGES

- | Ideal solution for coupling systems with 2-bolt mounting AND a high D value
- | Self-engaging AutoJaw hitch with jam protection and minimal overhang
- | No chains or wires
- | High corrosion resistance, manufactured from durable cast iron
- | Compatible with standard British drawbar eyes 30/40/50 mm



Adapter plate

See accessories for information

Part no. 185013915 (Bradley 17898)

SAP: ADAPTER PLATE - 4 BOLT EURO TO 2 BOLT UK

AutoJaw hitch with ball



- | Ball diameter: 50 mm
- | Trailer load: 3.5 t
- | D value: 23.41 kN
- | Vertical load/S value: 350 kg
- | Corrosion-resistant, black phosphated surface with black powder coating

| 2-bolt mounting as per Directive ECE-R55-01

Bolts not included in scope of delivery.

M16 bolts, strength class 8.8 or higher required



AutoJaw hitch without ball

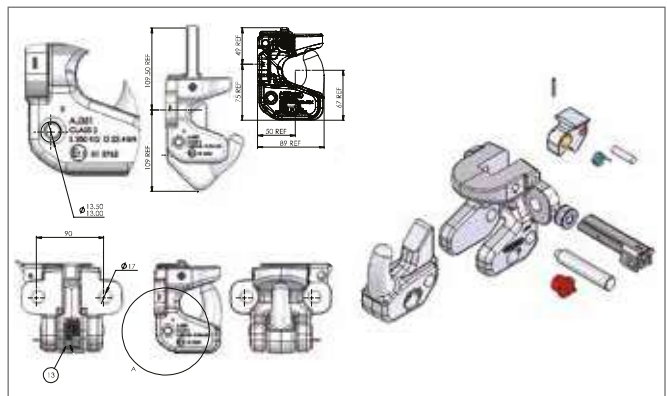
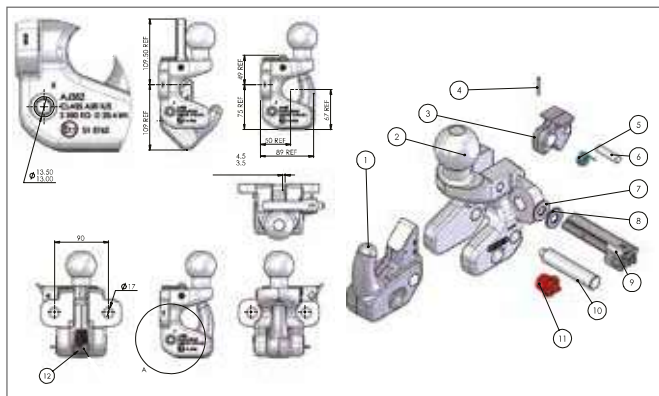


- | Trailer load: 3.5 t
- | D value: 23.41 kN
- | Vertical load/S value: 350 kg
- | Corrosion-resistant, black phosphated surface with black powder coating

| 2-bolt mounting as per Directive ECE-R55-01

Bolts not included in scope of delivery.

M16 bolts, strength class 8.8 or higher required

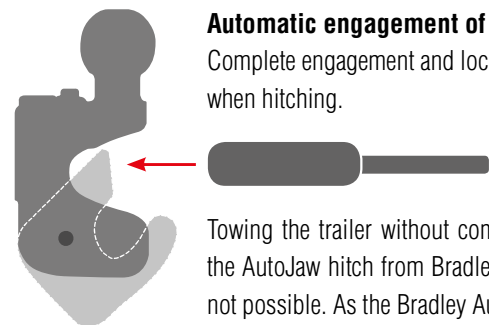
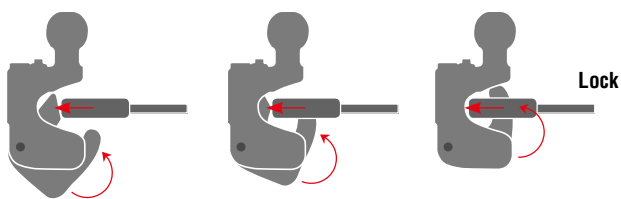
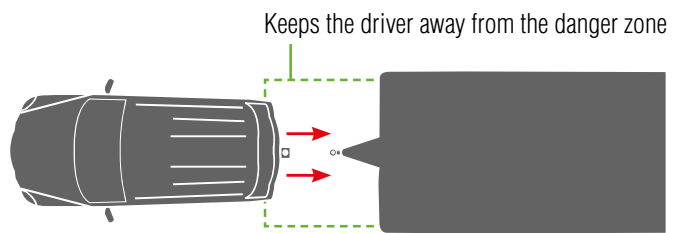
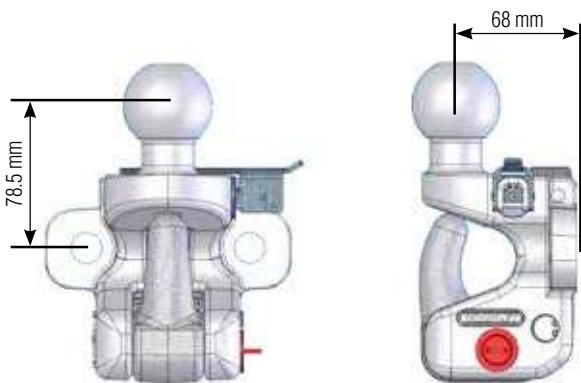


Part no.	Product
185001115 (Bradley AJ352L2) SAP: JAW AUTO CPL 3500KG 50MM BALL	Bradley AutoJaw with ball

Part no.	Product
185008615 (Bradley AJ351L2) SAP: TOWING JAW AUTO LESS BALL	Bradley AutoJaw without ball



7



Automatic engagement of AutoJaw

Complete engagement and locking when hitching.

Towing the trailer without completely locking the AutoJaw hitch from Bradley beforehand is not possible. As the Bradley AutoJaw can only be engaged and locked completely, reliability and safety are always guaranteed during trailer operation.

High trailer load

The high D value indicates a maximum trailer weight of 3,500 kg, even when the trailer is hitched to a towing vehicle with a weight of 7.5 tonnes. This is unique for a coupling mouth with 2-bolt mounting.



> GVW 3,500 kg



HEIGHT-ADJUSTABLE HOLDERS

from Dixon-Bate



The height-adjustable holders from Dixon-Bate enable trailers to be hitched at different heights. Each product has been designed for various hitch heights: from 100 mm to 260 mm in 50 mm steps.

The holder is positioned by hand, and is secured with one or two 19 mm stainless steel bolts with split pins. No tools are required to adjust the height. Any towball, any coupling mouth or any hook can be attached, as the product is pre-drilled for fastening using 2 or 4 bolts.

FEATURES AND ADVANTAGES

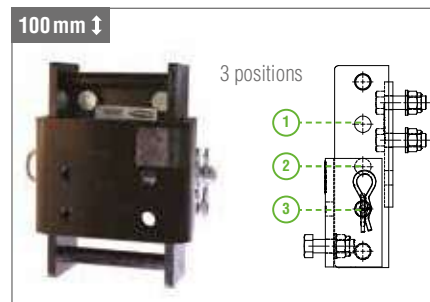
- | Height-adjustable without using tools
- | 3 to 5 positions can be set in 50 mm steps (all products)
- | Simple and safe locking mechanism
- | Designed completely in steel
- | 4-bolt mounting on towing vehicle
- | Hitches are fastened to the height-adjustable holder with 2 or 4 bolts
- | Stainless steel bolts with Ø19 mm for securely fastening the sliding plate with split pins
- | Corrosion-resistant, black phosphated surface with black powder coating
- | Bolts and split pins with black, glossy zinc coating
- | Additional towballs available (*see accessories*)



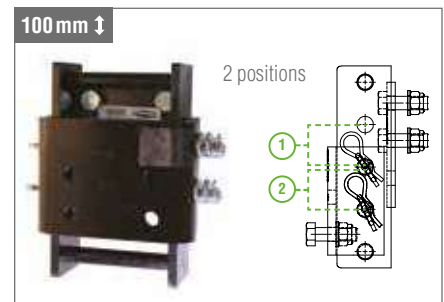
D VALUE
23.41 kN

- | Height-adjustable holder 100 mm
- | Height-adjustable: 3/2 positions in 50 mm steps
- | 1 or 2-bolt variant available
- | Bolts with Ø 19 mm for secure fastening with split pins
- | Pre-drilled sliding plate with 4 holes for fastening with 2 or 4 bolts as per Directive ECE-R55-01

Height-adjustable holder 100 mm



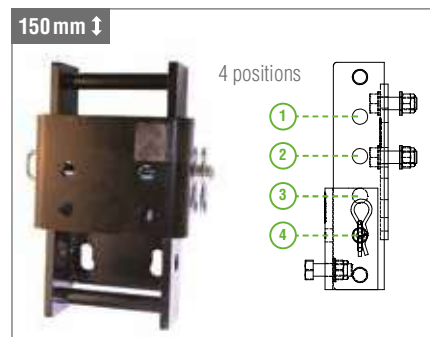
100 mm 2-bolt variant



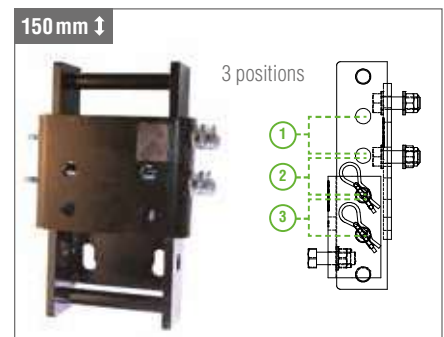
D VALUE
23.41 kN

- | Height-adjustable holder 150 mm
- | Height-adjustable: 4/3 positions in 50 mm steps
- | 1 or 2-bolt variant available
- | Bolts with Ø 19 mm for secure fastening with split pins
- | Pre-drilled sliding plate with 4 holes for fastening with 2 or 4 bolts as per Directive ECE-R55-01

Height-adjustable holder 150 mm



150 mm 2-bolt variant



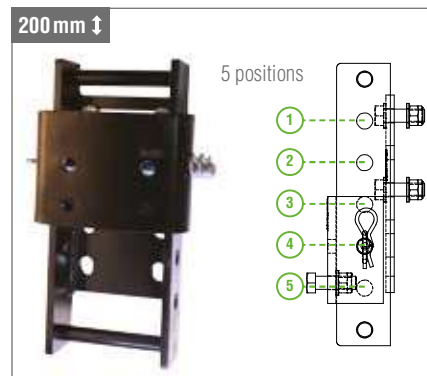
Part no.	SAP	Product
185010815 (Bradley DB202092)	ADJ COUPLING MOUNTING 100MM DB	Dixon-Bate height-adjustable holder 100 mm
185010915 (Bradley DB202092/2PIN)	ADJ COUPLING MOUNTING 100MM 2 PIN DB	100 mm 2-bolt variant
185002215 (Bradley DB202091)	COUPLING ADJ. MOUNTING 150MM	Dixon-Bate height-adjustable holder 150 mm
185011015 (Bradley DB202091/2PIN)	ADJ COUPLING MOUNTING 150MM 2 PIN DB	150 mm 2-bolt variant



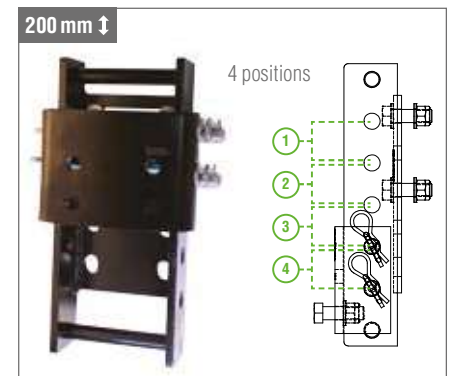
4 D VALUE 23.41 kN

- | Height-adjustable holder 200 mm
- | Height-adjustable: 5/4 positions in 50 mm steps
- | 1 or 2-bolt variant available
- | Bolts with Ø 19 mm for secure fastening with split pins
- | Pre-drilled sliding plate with 4 holes for fastening with 2 or 4 bolts as per Directive ECE-R55-01

Height-adjustable holder 200 mm



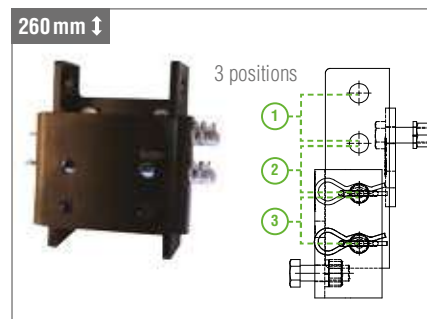
200 mm 2-bolt variant



4 D VALUE 23.41 kN

- | Height-adjustable holder 260 mm with 2 bolts
- | Height-adjustable: 3 positions in 50 mm steps
- | 2 x bolts with Ø 19 mm for secure fastening with split pins
- | Pre-drilled sliding plate with 4 holes for fastening with 2 or 4 bolts as per Directive ECE-R55-01

Height-adjustable holder 260 mm



Suitable products



Part no.	SAP	Product
185011115 (Bradley DB202090)	ADJ COUPLING MOUNTING 200MM DB	Dixon-Bate height-adjustable holder 200 mm
185011215 (Bradley DB202090/2PIN)	ADJ COUPLING MOUNTING 200MM 2 PIN DB	200 mm 2-bolt variant
185002415 (Bradley DB202117)	COUPLING ADJUSTABLE 2 PIN	Height-adjustable holder 260 mm with 2 bolts

PINTLES

from Dixon-Bate



Pintles are hooks that can be rotated 360°, and with which the trailer can turn independently of the towing vehicle on uneven terrain. This is particularly important for military vehicles that are driven at high speed. The pintles from Dixon-Bate are also suitable for normal road traffic, as they can be locked in a fixed position when necessary.

The military has been placing its trust in Dixon-Bate pintles for over 50 years. With their robust design, the rotatable pintles can be put to diverse uses and are extremely durable. Thanks to their off-road suitability, they are the first choice for public companies and commercial users.

FEATURES AND ADVANTAGES

- | Lower lock for securing the coupling mouth in one position or for 360° rotation
- | Global export success: very popular with manufacturers of military vehicles
- | Lock secured with stainless steel bolt and split pin
- | The only products designed for operating trailers with a NATO drawbar eye (3 inches/76 mm) in the military sector
- | With black electrophoretic powder coating

Light 3.5 t pintle



- | Trailer load: 3.5 t
- | D value: 30.95 kN
- | Drawbar eye: min. internal diam. 75 mm
- | Cross-section thickness: 38–41 mm
- | Lock secured with stainless steel bolt and split pin
- | 4-bolt mounting as per Directive ECE-R55-01
- | Bolts included in the scope of delivery



NATO part no.: 2540-99-825-6119

Land Rover part no. NRC 2051

Medium 7.5 t pintle



- | Trailer load: 7.5 t
- | D value: 59.61 kN
- | Drawbar eye: min. internal diam. 75 mm
- | Cross-section thickness: 38–41 mm
- | Lock secured with stainless steel bolt and split pin
- | 4-bolt mounting as per Directive ECE-R55-01
- | Bolts included in the scope of delivery



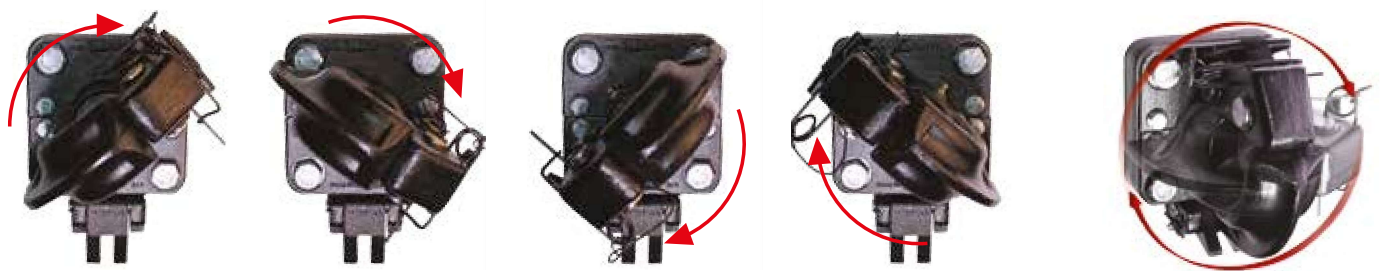
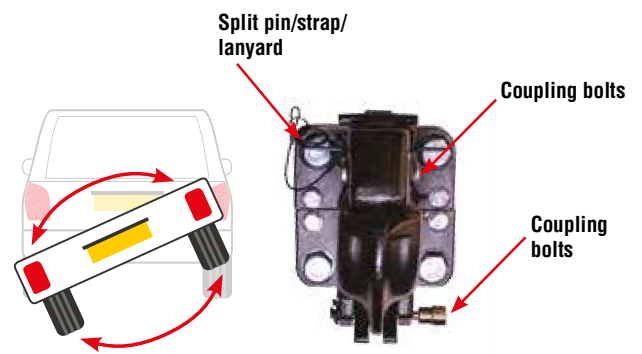
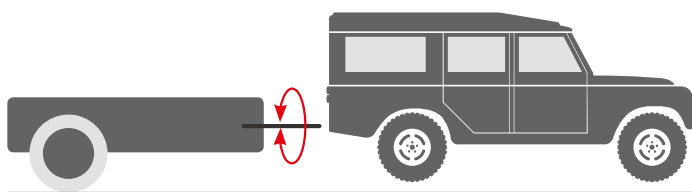
NATO part no.: 2540-99-825-6118

Part no.	SAP	Product
185003815 (Bradley FV987958)	HAKENKUPPLUNG - FÜR ZUGÖSE 76MM	Light 3.5 t pintle
185011315 (Bradley FV987957)	PINTLE MEDIUM - SUIT 76MM NATO EYE	Medium 7.5 t pintle



Global export success: very popular for military applications and with manufacturers of military vehicles

360° rotation of the pintle



Can be rotated 360°; integrated device for securely fixing the pintle in position

Generally for military applications and off-road use

These pintles are perfectly suitable for coupling systems for various applications on uneven terrain: from light towing vehicles and light loads up to and including commercial, industrial and military applications involving heavy loads.



DIXON-BATE SHOCKLINK



Bigger engines, raised and hardened suspensions, the lever effect of the drawbar and driving on uneven terrain are typical of all-wheel drive and commercial towing vehicles, and can lead to fatigue symptoms in the driver and co-driver as well as damage to the trailer.

The Shocklink product range from Dixon-Bate has been developed to absorb up to 70% of the load. The two main products in the Shocklink series are "Shocklink mark II" for all-wheel drive and commercial towing vehicles and "Commercial Shocklink" for more heavy-duty towing vehicles. Commercial Shocklink is available as both a height-adjustable version and a version for mounting with 4 bolts or for fixed mounting.



- | Trailer load: 3.5 t
- | D value: 15.26 kN
- | Vertical load/S value: 80 kg or 100 kg
- | For all-wheel drive and light commercial towing vehicles:
 - Permissible gross weight of the towing vehicle (GVW) 2,800 kg
 - Permissible gross weight of the trailer (GTW) 3,500 kg
- | Pre-drilled, holes for 2 bolts for standard towball of 50 mm, universal hitch or coupling mouth
- | Type approval as per Directive ECE-R55-01
- | 1-year warranty; two bolts and installation instructions included in the scope of delivery



- | Trailer load: 3.5 t
- | D value: 28.17 kN
- | Vertical load/S value: 100 kg
- | For commercial towing vehicles:
 - Permissible gross weight of the towing vehicle (GVW) 16,000 kg
 - Permissible gross weight of the trailer (GTW) 3,500 kg
- | Type approval as per Directive ECE-R55-01
- | 4-bolt mounting

FEATURES AND ADVANTAGES

- | Versatile design: Shocklink products can be attached to the majority of towing vehicles
- | Innovative design, including springs and rubber snubbers of high quality for increased shock absorbing
- | Up to 70% of the load are absorbed
- | Shocklink products are completely height-adjustable in multiple positions
- | 4-bolt mounting on towing vehicle
- | With useful installation, operating and maintenance instructions



Shocklink mark II 80 kg



Shocklink mark II 100 kg



Shocklink adapter plate



Commercial Shocklink, height-adjustable



Shocklink commercial adapter plate

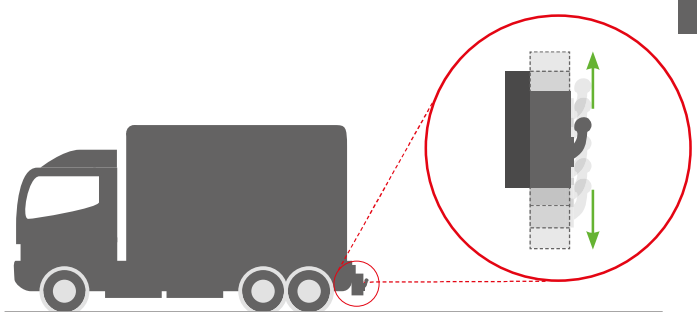
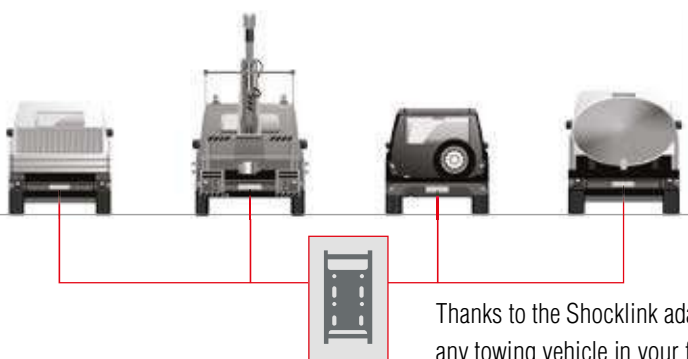
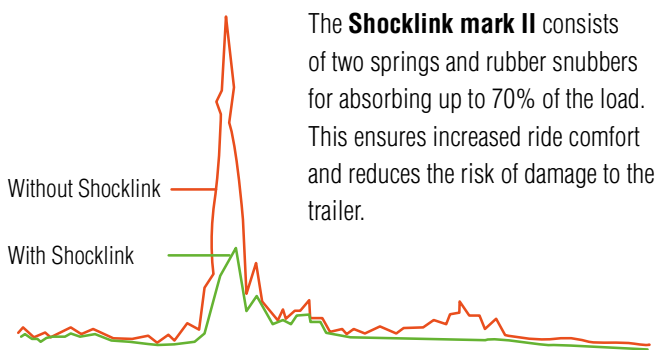
Part no.	SAP	Product
185001815 (Bradley DB202004)	SHOCKLINK MK2 DIXON BATE	Shocklink mark II (80 kg)
185002315 (Bradley DB202097)	SHOCKLINK MK2 100KG	Shocklink mark II (100 kg)
185001915 (Bradley DB202005)	SHOCKLINK ADAPTOR PLATE DIXON BATE	Shocklink adapter plate
185011415 (Bradley DB201928)	SHOCKLINK ADJ 100KG COMMERCIAL DB	Commercial Shocklink, height-adjustable
185002115 (Bradley DB202021)	SHOCKLINK ADAPTOR PLATE C DIXON BATE	Shocklink commercial adapter plate



Shocklink adapter plates for all vehicles in your fleet



FUNCTION



Shocklink mark II is installed between the towing vehicle's drawbar and the trailer.

During trailer operation, Shocklink mark II reacts to uneven roads by means of a vertically floating mounting, and absorbs shocks.

EASY FASTENING

The Shocklink mark II's scope of delivery includes two coupling bolts that are required to fasten the adapter plate or the height-adjustable coupling bracket.

Standard coupling bracket

Use the Shocklink adapter plate, which is attached directly on the coupling bracket, to fasten a coupling bracket with at least 4 hitch holes. If your coupling bracket has type approval, contact the coupling bracket manufacturer to make sure that using the Shocklink does not cause the approval to become void.

Height-adjustable holders

The Shocklink mark II includes mountings that are attached directly on the Dixon-Bate height-adjustable holders instead of the sliding plate.

ACCESSORIES



Replacement parts



25 mm bolt, lanyard, strap,
split pin for 3.5 t coupling mouth E40T
Part no.: 185013515 (*Bradley Kit171*)
SAP: 25MM BOLZEN + SEIL + SPLINT E40T



32mm bolt, lanyard, strap,
split pin for 3.5 t coupling mouth E100T
Part no.: 185013615 (*Bradley Kit169*)
SAP: 32MM BOLZEN + SEIL + SPLINT E100



25 mm ball head, lanyard, strap,
split pin for universal 3.5 t hitch E100TC
Part no.: 185005515 (*Bradley Kit172*)
SAP: 25MM KUGELKOPF + SEIL + SPLINT E100TC



32mm ball head, lanyard, strap,
split pin for universal 3.5 t hitch E100TC
Part no.: 185012715 (*Bradley Kit170*)
SAP: 32MM KUGELKOPF + SEIL + SPLINT E100TC



25 mm ball head, lanyard, strap,
split pin (without ball)
for universal 3.5 t hitch V354L
Part no.: 185013815 (*Bradley Kit178*)
SAP: 25MM BOLZEN + SEIL + SPLINT V354L



E40TC & E100TC
Locking handle
Part no.: 185012615 (*Bradley Kit173*)
SAP: VERRIEGELUNGSGRIFF E40TC & E100TC



32 mm bolt, chain, strap,
split pin for universal 5.0 t hitch
Part no.: 185013115 (*Bradley DB67187*)
SAP: 32MM BOLZEN 5000KG + SICHERUNGSSET



25 mm bolt, lanyard, strap,
split pin for 3.5 t coupling mouth
Part no.: 185012815 (*Bradley DB68121*)
SAP: 25 MM BOLZEN 3500KG + SICHERUNGSSET



Hardened 25 mm bolt, lanyard,
split pin for 3.5 t coupling mouth with hardened
head
Part no.: 185013415 (*Bradley DB67228*)
SAP: 25MM BOLZEN GEHÄRTET + SEIL + SPLINT



Lanyard, strap,
split pin for 25 mm bolt
Part no.: 185012915 (*Bradley DB68129*)
SAP: KETTE/LASCHE/SPLINT 3500KG



Hardened 25 mm bolt and holder
for the 3.5 t stabiliser
Part no.: 185013315 (*Bradley DB68240*)
SAP: 25MM BOLZEN GEHÄRTET + HALTER

Towballs



Towball, compatible with European stabilisation
device, 50 mm, with long wings
(17.0 kN trailer load)
Part no.: 185003715 (*Bradley DB67969*)
SAP: TOWBALL - LONG REACH NECK



50 mm towball
(17.0 kN trailer load)
Part no.: 185014115 (*Bradley DB67845*)
SAP: TOWBALL 50MM 2 BOLT DB



Bradley fin cover
for towballs
Part no.: 185014215 (*Bradley FC1*)
SAP: TOWBALL COVER SPRING LOADED CHROME

Adapter plate



With this adapter plate (in black only), you can
attach a European towball with 4 holes to a
standard British fastening with 2 bolts.
Only included in the scope of delivery of the
products described in this catalogue.
Part no.: 185013915 (*Bradley 17898*)
SAP: ADAPTER PLATE - 4 BOLT EURO TO 2 BOLT UK