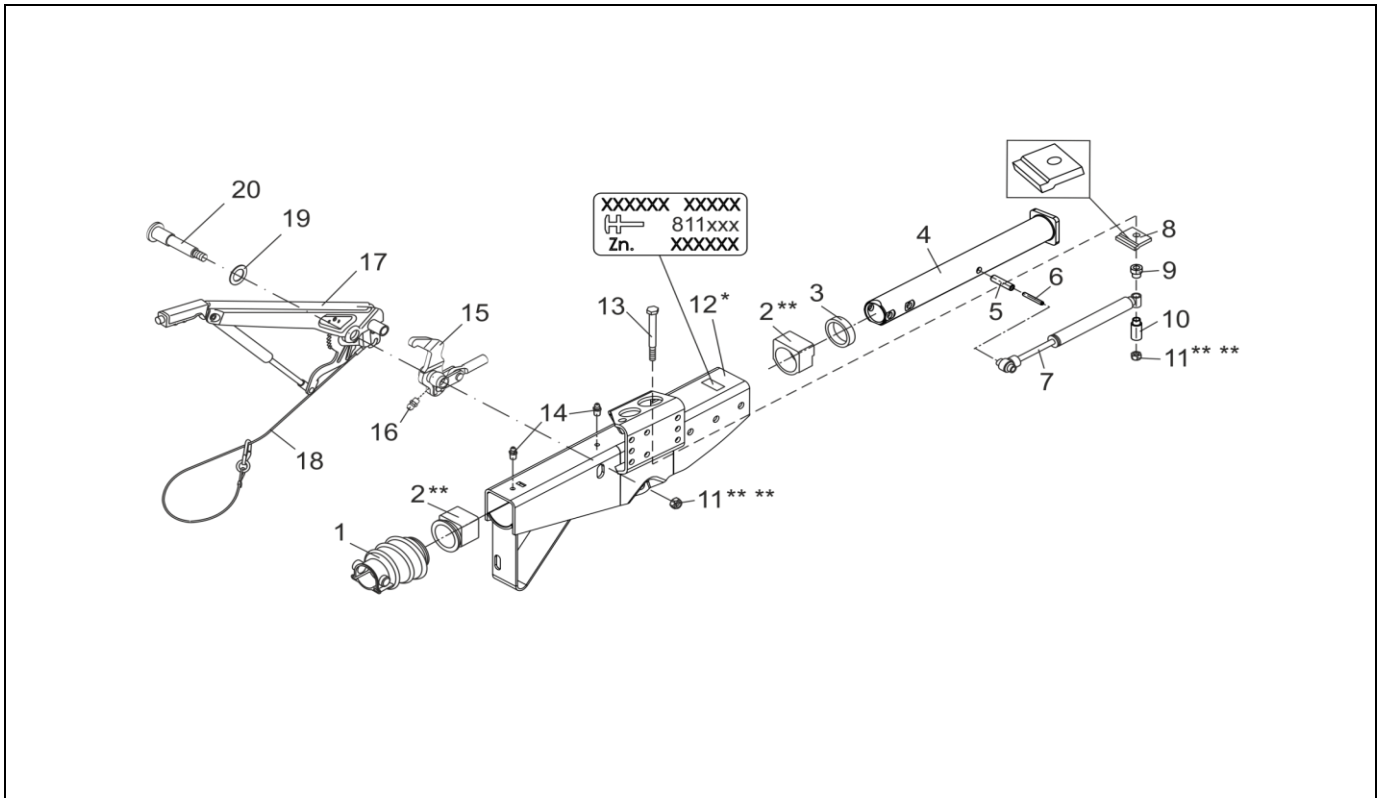


# OVERRUN DEVICE VKT 82 161S GASSPRING

ETI- No. 811756

(Specify the order with the ETI No.)

**AL-KO**  
Spare Parts



Item	Description	Part No.
1	BELLOWS	366356
2	ET-SET: KIT BUSHING OVERRUN **	1210131
3	PROFILE RING	371372
4	DRAW TUBE	571874
5	CLAMPING PIN DIN 1481-12X48	704408
6	CLAMPING PIN DIN 1481-7X48	704407
7	SHOCK ABSORBER	370558
8	END STOP PLATE	581699
9	BUSH	647903
10	BUSH	1540256
11	HEX NUT DIN 985-M12-10-A3C ***	705526

Item	Description	Part No.
12	HOUSING	*
13	HEX BOLT DIN 931-M12X120-8.8-A3C	705425
14	GREASE NIPPLE CONUS DIN 71412-AS 8X1	375900
15	BELL CRANK (INCL. GREASE NIPPLE CONUS)	
	iH = 105/31.5	648132
	iH = 105/35	380319
16	GREASE NIPPLE CONUS DIN 71412-AS 6X1	700203
17	HAND BRAKE LEVER INCL. BRAKE AWAY CABLE	220096
18	BRAKE AWAY CABLE FOR HAND BRAKE LEVER	368605
19	WASHER DIN 988-19X34X3	370693
20	BEARING BOLT M12X1.5X106.5-VZ	581145

\* ONLY COMPLETE OVERRUN DEVICE AVAILABLE, SEE IMPRINT ZN.-NR.

\*\* ATTENTION: AFTER FITTING THE BEARING BUSHES MUST BE REAMED TO THE PARTICULAR DRAW BAR DIAMETER!

\*\*\* FOR SAFETY REASONS: SELF-LOCKING NUT AND SCREW WITH CHEMICAL SELF-LOCKING MUST BE USED ONCE. AFTER UNTIGHTEN ALWAYS USE A NEW SPARE.

provided	ETI-No.	changed	Change No.	Reason of the change	Revisions-No.
29.07.15/ÖJ	811756_en		FREIGABE		A