

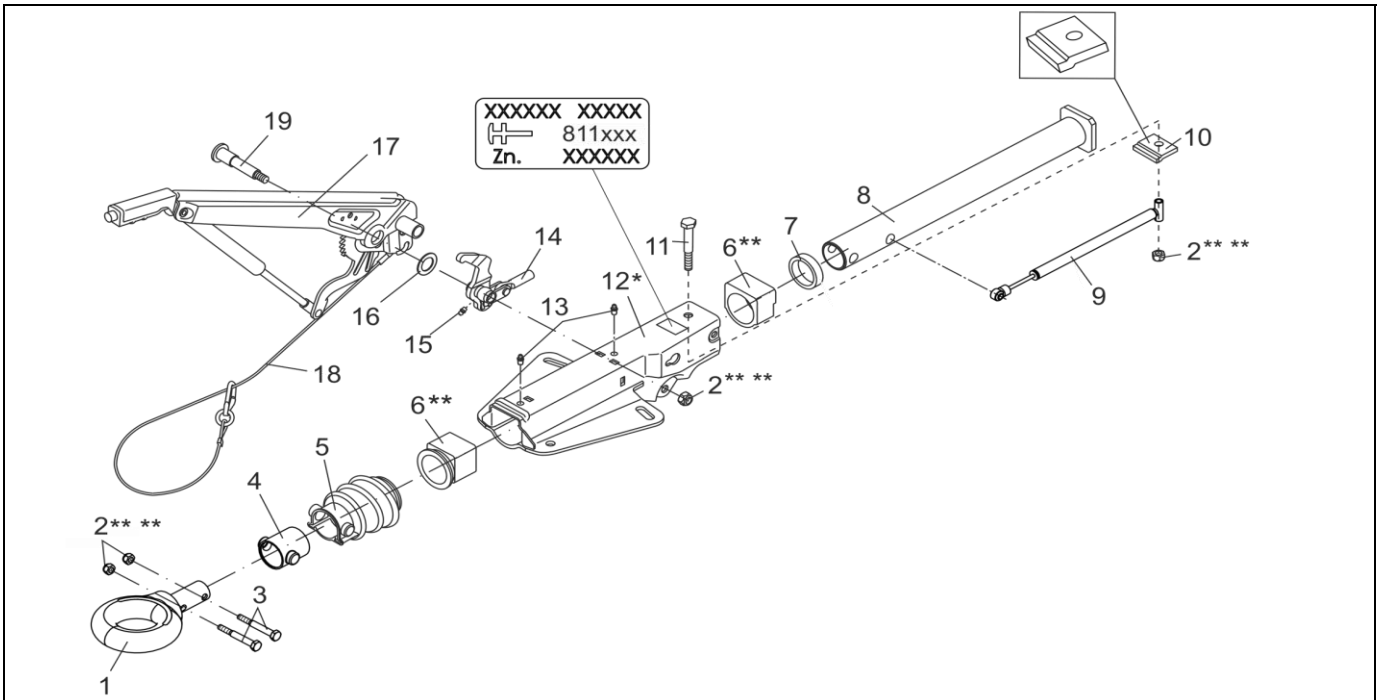
OVERRUN DEVICE V 161 S GASSPRING/HAND BRAKE LEVER SPECIAL

ETI- No. 811647

(Specify the order with the ETI No.)

AL-KO

Spare Parts



Item	Description	Part No.
1	DRAWBAR EYE NATO Ø76	357420
2	HEX NUT DIN 985-M12-10-A3C	**** 702750
3	HEX BOLT DIN 931-M12X60-8.8-A3C	702749
4	BELLOWS	1540147
5	BELLOWS	366356
6	ET-SET: KIT BUSHING OVERRUN	** 1210131
7	PROFILE RING	371372
8	DRAW TUBE	380309
9	SHOCK ABSORBER	583528
10	END STOP PLATE	581699
11	HEX BOLT DIN 931-M12X90-8.8-A3C	702823
12	HOUSING	*
13	GREASE NIPPLE CONUS DIN 71412-AS 8X1	375900
14	BELL CRANK (INCL. GREASE NIPPLE CONUS) iH = 90/27	380265
15	GREASE NIPPLE CONUS DIN 71412-AS 6X1	700203
16	WASHER DIN 988-19X34X3	370693
17	HAND BRAKE LEVER (INCL. BRAKE AWAY CABLE)	220095
18	BRAKE AWAY CABLE FOR HAND BRAKE LEVER	368605
19	BEARING BOLT M12X1.5X106.5-VZ	581145

* ONLY COMPLETE OVERRUN DEVICE AVAILABLE, SEE IMPRINT ZN.-NR.

** ATTENTION: AFTER FITTING THE BEARING BUSHES MUST BE REAMED TO THE PARTICULAR DRAW BAR DIAMETER!

*** FOR SAFETY REASONS: SELF-LOCKING NUT AND SCREW WITH CHEMICAL SELF-LOCKING MUST BE USED ONCE. AFTER UNTIGHTEN ALWAYS USE A NEW SPARE.

provided	ETI-No.	changed	Change No.	Reason of the change	Revisions-No.
03.07.12 OJ	811647_en		FREIGABE		A