

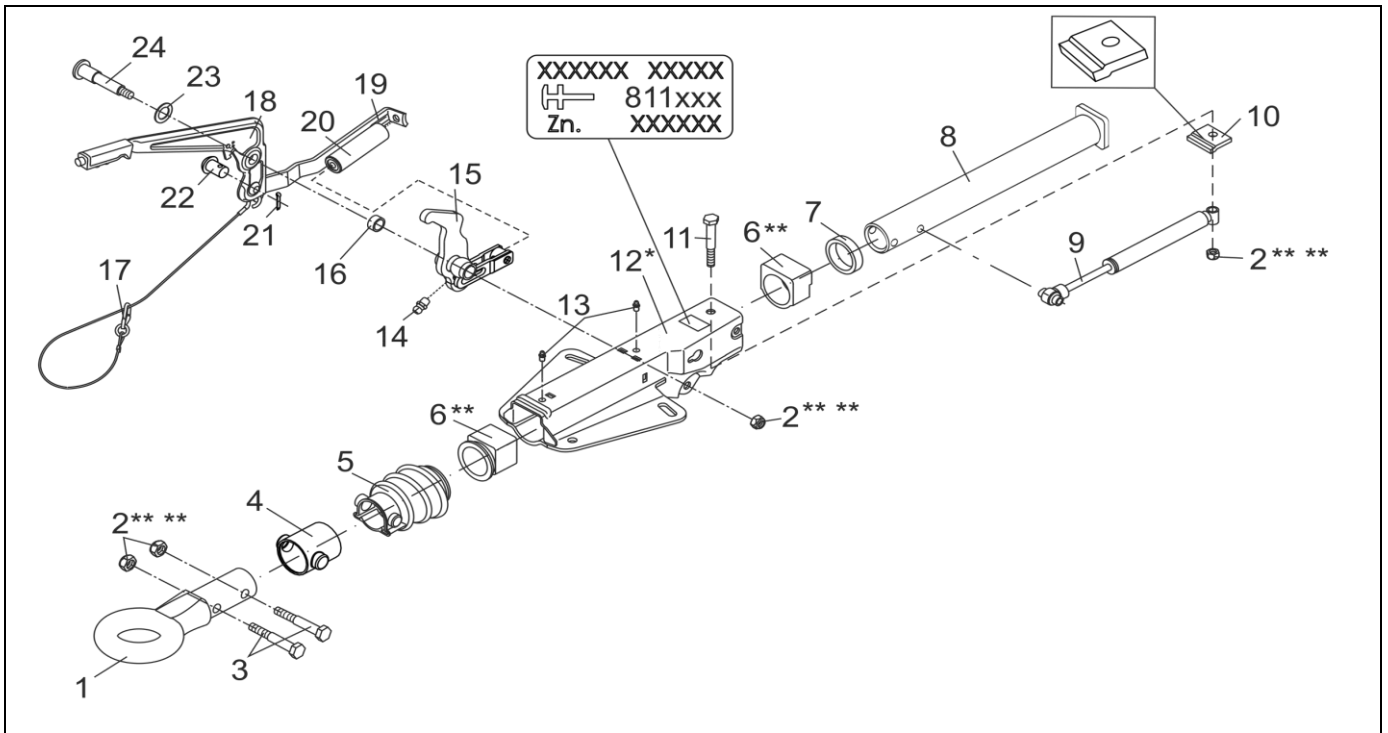
OVERUN DEVICE V 161S DIN-DRAWBAR EYE AND SPING CYLINDER BUILT UP

ETI- No. 811634

(Specify the order with the ETI No.)



Spare Parts



Item	Description	Part No.
1	DRAWBAR EYE DIN Ø40	357419
2	HEX NUT DIN 985-M12-10-A3C *** **	702750
3	HEX BOLT DIN 931-M12X60-8.8-A3C	702749
4	BELLOWS Ø50	1540147
5	BELLOWS	366356
6	ET-SET: KIT BUSHING OVERRUN * *	1210131
7	PROFILE RING	371372
8	DRAW TUBE FOR DIN DRAWBAR EYE Ø40	571875
9	SHOCK ABSORBER	370558
10	END STOP PLATE	581699
11	HEX BOLT DIN 931-M12X90-8.8-A3C	702823
12	HOUSING	*
13	GREASE NIPPLE CONUS DIN 71412-AS 8X1	375900

Item	Description	Part No.
14	GREASE NIPPLE CONUS DIN 71412-AS 6X1	700203
15	BELL CRANK (INCL. GREASE NIPPLE CONUS) iH = 90/27	380310
16	WASHER DIN125-A10.5-A3C	700139
17	BRAKE AWAY CABLE FOR HAND BRAKE LEVER	368605
18	HAND BRAKE LEVER INCL. BRAKE AWAY CABLE	242379
19	TENSION BRACKET	2170110608
20	SPRING CYLINDER	2075020601
21	SPLINT PIN DIN 94 4X20-VZ	700192
22	BOLT	2076810609
23	WASHER DIN125-A17-A3C	700625
24	BEARING BOLT M12X100-VZ	2077710503

* ONLY COMPLETE OVERRUN DEVICE AVAILABLE, SEE IMPRINT ZN.-NR.

** ATTENTION: AFTER FITTING THE BEARING BUSHES MUST BE REAMED TO THE PARTICULAR DRAW BAR DIAMETER!

*** FOR SAFETY REASONS: SELF-LOCKING NUT AND SCREW WITH CHEMICAL SELF-LOCKING MUST BE USED ONCE. AFTER UNTIGHTEN ALWAYS USE A NEW SPARE.

provided	ETI-No.	changed	Change No.	Reason of the change	Revisions-No.
23.08.12ÖJ	811634_en		FREIGABE		A