

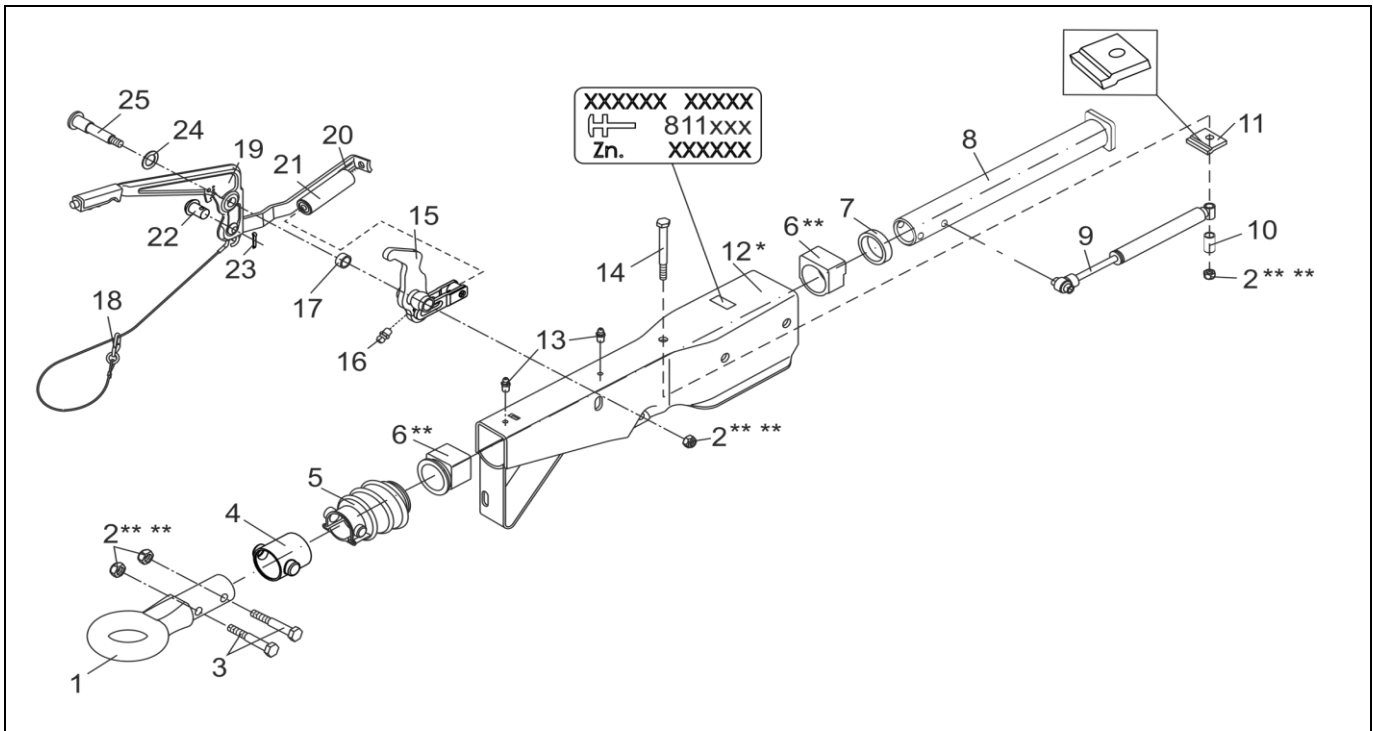
# OVERUN DEVICE VKT 161S WITH SPING CYLINDER AND DIN-DRAWBAR EYE

ETI- No. 811503

(Specify the order with the ETI No.)



Spare Parts



Item	Description	Part No.
1	DRAWBAR EYE DIN Ø40	357419
2	HEX NUT DIN 985-M12-10-A3C ** **	702750
3	HEX BOLT DIN 931-M12X60-8.8-A3C	702749
4	BELLOWS Ø50	1540147
5	BELLOWS	366356
6	ET-SET: KIT BUSHING OVERRUN **	1210131
7	PROFILE RING	371372
8	DRAW TUBE FOR DIN DRAWBAR EYE	571875
9	SHOCK ABSORBER	370558
10	BUSH	625660
11	END STOP PLATE	581699
12	HOUSING	*
13	GREASE NIPPLE CONUS DIN 71412-AS 8X1	375900

Item	Description	Part No.
14	HEX BOLT DIN 931-M12X120-8.8-A3C	701670
15	BELL CRANK (INCL. GREASE NIPPLE CONUS) iH = 90/27	380310
16	GREASE NIPPLE CONUS DIN 71412-AS 6X1	700203
17	BUSH	358470
18	BRAKE AWAY CABLE FOR HAND BRAKE LEVER	368605
19	HAND BRAKE LEVER INCL. BRAKE AWAY CABLE	354259
20	TENSION BRACKET	2170110608
21	SPRING CYLINDER	2077050601
22	BOLT	2076810609
23	SPLINT PIN DIN 94 4X20-VZ	700192
24	WASHER DIN125-A17-A3C	700625
25	BEARING BOLT M12X100-VZ	2077710503

\* ONLY COMPLETE OVERRUN DEVICE AVAILABLE, SEE IMPRINT ZN.-NR.

\*\* ATTENTION: AFTER FITTING THE BEARING BUSHES MUST BE REAMED TO THE PARTICULAR DRAW BAR DIAMETER!

\*\*\* FOR SAFETY REASONS: SELF-LOCKING NUT AND SCREW WITH CHEMICAL SELF-LOCKING MUST BE USED ONCE. AFTER UNTIGHTEN ALWAYS USE A NEW SPARE.

provided	ETI-No.	changed	Change No.	Reason of the change	Revisions-No.
10.08.12ÖJ	811503_en		FREIGABE		A