

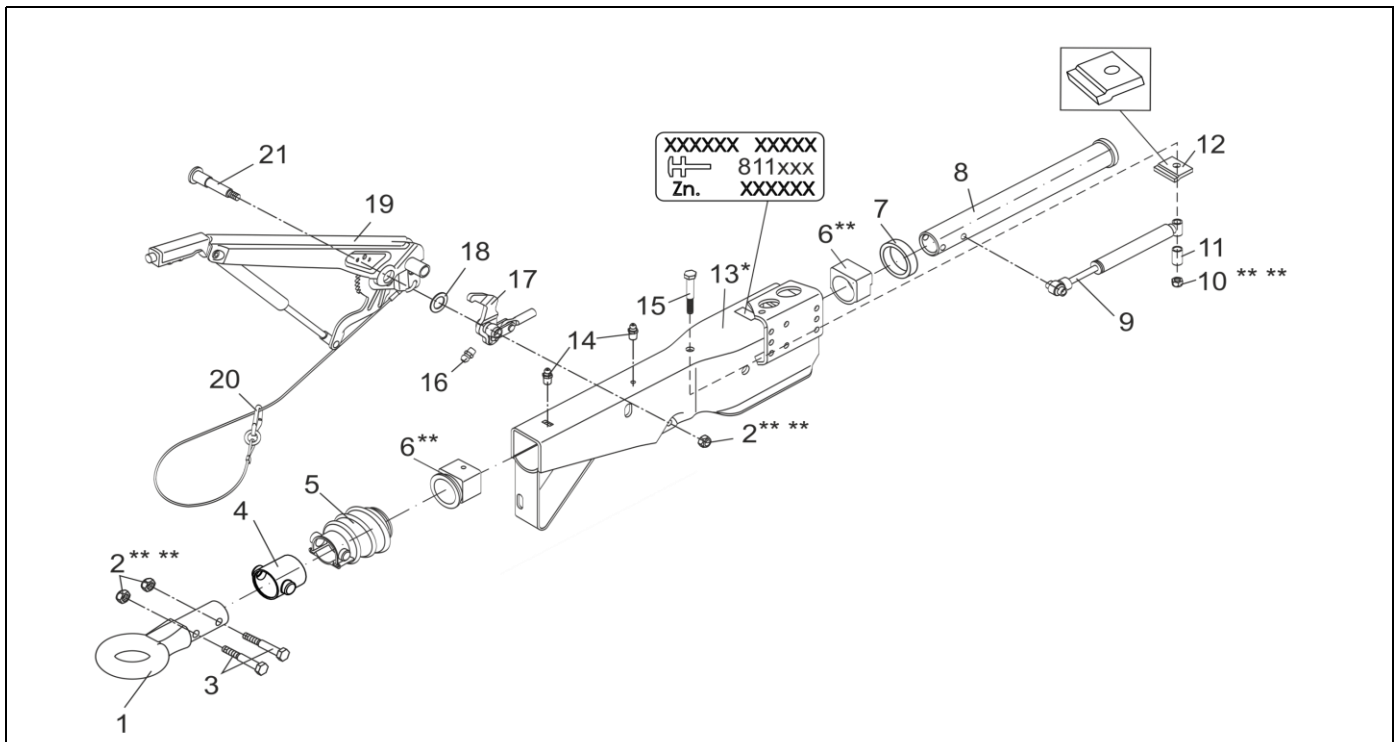
OVERRUN DEVICE VKT 161S WITH GASSPRING AND DIN DRAWBAR EYE

ETI- No. 811470

(Specify the order with the ETI No.)

AL-KO

Spare Parts



Item	Description	Part No.
1	DRAWBAR EYE DIN Ø40	357419
2	HEX NUT DIN 985-M12-10-ZN8DISP ** **	705526
3	HEX BOLT DIN 931-M12X60-8.8-ZNDISP	705545
4	BELLOWS Ø50	1540147
5	BELLOWS	366356
6	ET-SET: KIT BUSHING OVERRUN **	1210131
7	PROFILE RING	371372
8	DRAW TUBE (ROTATING DESIGN)	380413
9	SHOCK ABSORBER	370558
10	HEX NUT DIN 985-M12-8-ZN8DISP ** **	706437
11	BUSH	370580

Item	Description	Part No.
12	END STOP PLATE	581699
13	HOUSING	*
14	GREASE NIPPLE CONUS DIN 71412-AS 8X1	375900
15	HEX BOLT DIN 931-M12X110-8.8-ZN8DISP	705420
16	GREASE NIPPLE CONUS DIN 71412-AS 6X1	700203
17	BELL CRANK (INCL. GREASE NIPPLE CONUS) iH = 105/31.5	648132
18	WASHER DIN 988-19X34X3	370693
19	HAND BRAKE LEVER INCL. BRAKE AWAY CABLE	220096
20	BRAKE AWAY CABLE FOR HAND BRAKE LEVER	368605
21	BEARING BOLT M12X1.5X106.5-VZ	581145

* ONLY COMPLETE OVERRUN DEVICE AVAILABLE, SEE IMPRINT ZN.-NR.

** ATTENTION: AFTER FITTING THE BEARING BUSHES MUST BE REAMED TO THE PARTICULAR DRAW BAR DIAMETER!

*** FOR SAFETY REASONS: SELF-LOCKING NUT AND SCREW WITH CHEMICAL SELF-LOCKING MUST BE USED ONCE. AFTER UNTIGHTEN ALWAYS USE A NEW SPARE.

provided	ETI-No.	changed	Change No.	Reason of the change	Revisions-No.
13.08.12 ÖJ	811470_en		FREIGABE		A
		13.10.15ÖJ	18443	SEE CHANGE	B