

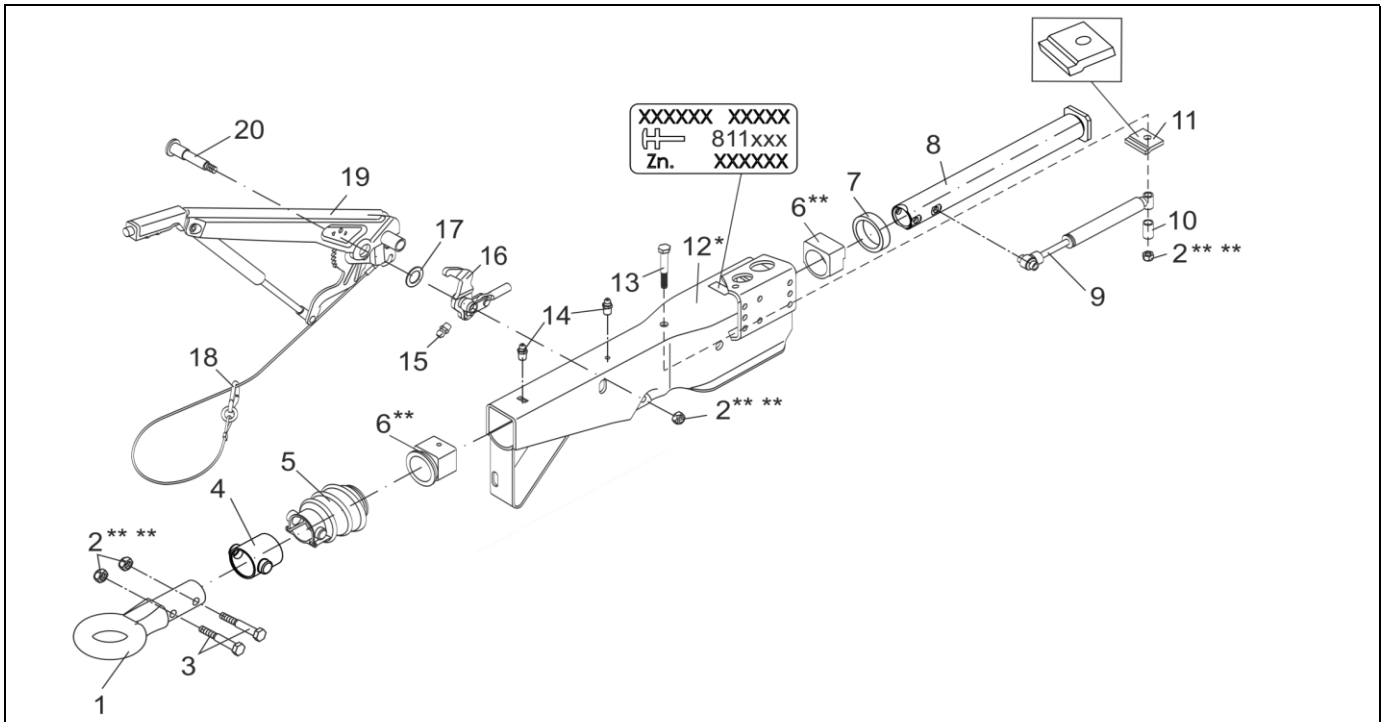
OVERRUN DEVICE VKT 161S WITH GASSPRING AND DRAWBAR EYE

ETI- No. 811465

(Specify the order with the ETI No.)

AL-KO

Spare Parts



Item	Description	Part No.
1	DRAWBAR EYE	
	NATO Ø76	357420
	DIN Ø40	357419
	ITALY Ø45	370999
2	HEX NUT DIN 985-M12-10-A3C ** **	702750
3	HEX BOLT DIN 931-M12X60-8.8-A3C	702749
4	BELLOWS Ø50	1540147
5	BELLOWS	366356
6	ET-SET: KIT BUSHING OVERRUN **	1210131
7	PROFILE RING	371372
8	DRAW TUBE FOR NATO Ø76 AND	380309
	ITALY Ø45 DRAWBAR EYE	571875
9	SHOCK ABSORBER	583528
10	BUSH	625660
11	END STOP PLATE	581699

Item	Description	Part No.
12	HOUSING	*
13	HEX BOLT DIN 931-M12X120-8.8-A3C	701670
14	GREASE NIPPLE CONUS DIN 71412-AS 8X1	375900
15	GREASE NIPPLE CONUS DIN 71412-AS 6X1	700203
16	BELL CRANK (INCL. GREASE NIPPLE CONUS) iH = 90/27	380265
17	WASHER DIN 988-19X34X3	370693
18	BRAKE AWAY CABLE FOR HAND BRAKE LEVER	368605
19	HAND BRAKE LEVER INCL. BRAKE AWAY CABLE	220094
20	BEARING BOLT M12X1.5X106.5-VZ	581145

* ONLY COMPLETE OVERRUN DEVICE AVAILABLE, SEE IMPRINT ZN.-NR.

** ATTENTION: AFTER FITTING THE BEARING BUSHES MUST BE REAMED TO THE PARTICULAR DRAW BAR DIAMETER!

*** FOR SAFETY REASONS: SELF-LOCKING NUT AND SCREW WITH CHEMICAL SELF-LOCKING MUST BE USED ONCE. AFTER UNTIGHTEN ALWAYS USE A NEW SPARE.

provided	ETI-No.	changed	Change No.	Reason of the change	Revisions-No.
13.08.12 ÖJ	811465_en		FREIGABE		A