

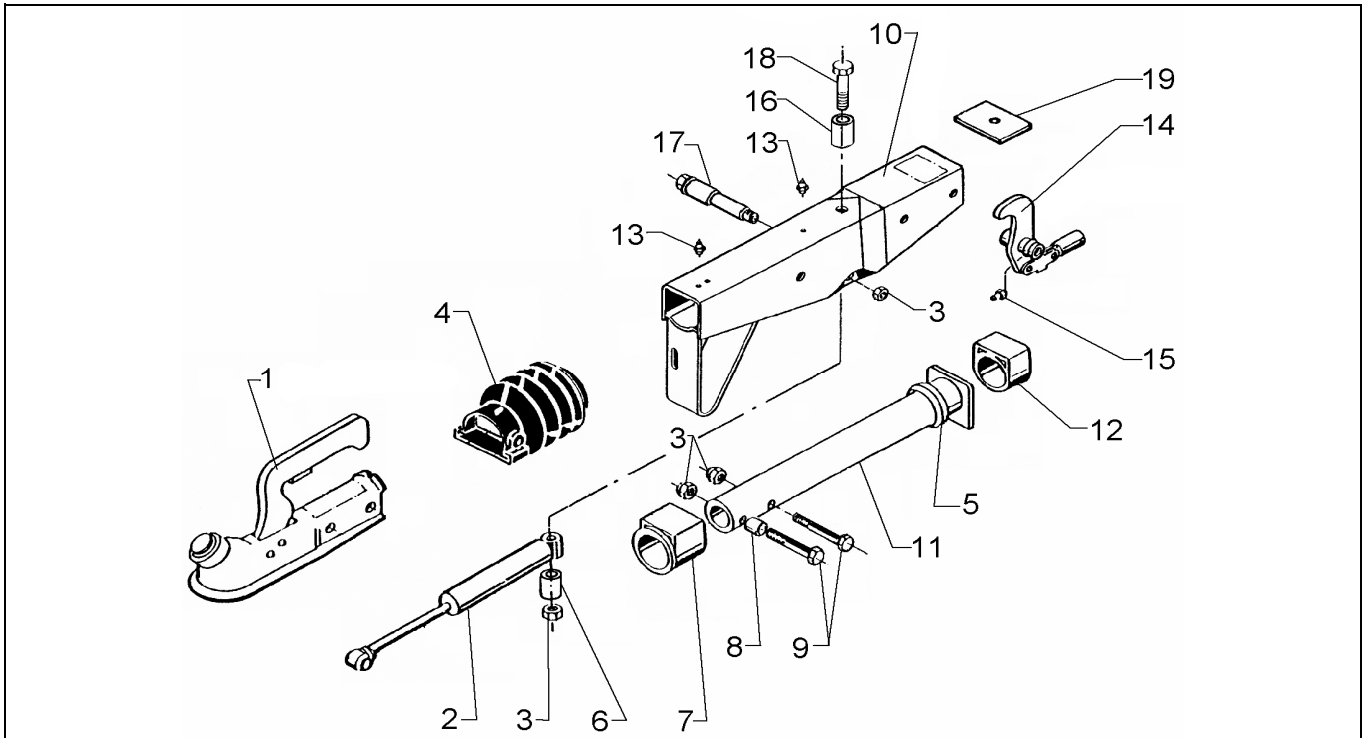
OVERRUN DEVICE 161 S VERS. C

ETI- No. 811453

(Specify the order with the ETI No.)

AL-KO

Spare Parts



Item	Description	Drawing No.
1	BALL COUPLING (order due to type, without mounting material)	
2	SHOCK ABSORBER	583529
3	NUT HEX M12 DIN 985	704065
4	BELLOW	366356
5	DAMPING RUBBER	371372
6	BUSH	647572
7	FLANGE BUSH (not rubbed out)	353943
8	BUSH	370559
9	BOLT HEX M12X70 DIN 931	700061
10	BODY CPL. WITH BUSHES FOR OD	*
11	DRAWBAR WELDED	571873
12	PLAIN BUSH (not rubbed out)	353942
13	GREASE NIPPLE AS 8X1 CONUS	375900
14	BELL CRANK 90 : 27 WITH JOINT HEAD AND NIPPLE (POS.15) (measure X engraved)	626632
15	GREASE NIPPLE AS 6X1 CONUS	700203
16	BUSH	625660
17	BEARING BOLT	625255
18	BOLT HEX M12X120 DIN 931	701670
19	END STOP PLATE	581699

Item	Description	Drawing No.

* look engraved drawing-number on the OD

OD = overrun device

provided	ETI-No.	changed	Change No.	Reason of the change	Revisions-No.
01.06.04	811453_en	10.08.2009	FREIGABE		A