

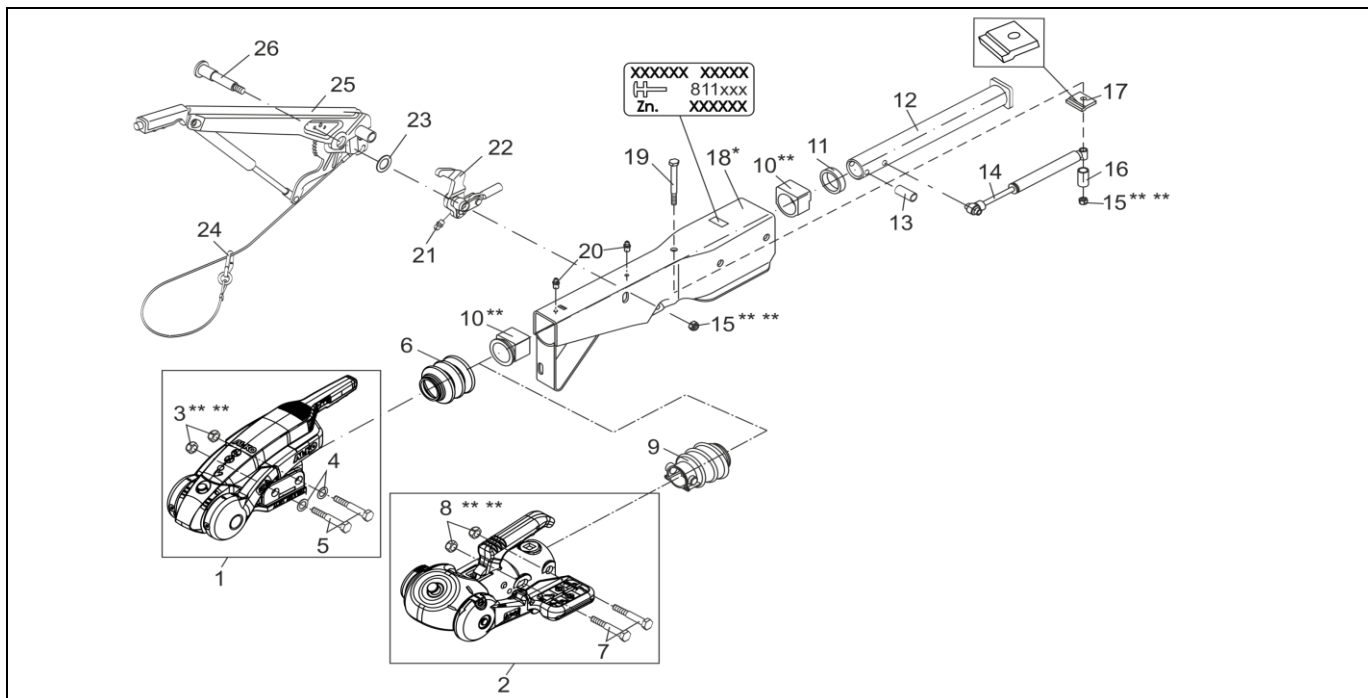
# OVERRUN DEVICE VKT 70 / 161S WITH AKS

ETI- No. 811410

(Specify the order with the ETI No.)

# AL-KO

Spare Parts



Item	Description	Part No.
1	SAFETY COUPLING AKS 3504 INCL.(POS.3,4,5)	1224895
2	SAFETY COUPLING AKS 1300 INCL.(POS:7,8)	245796
3	HEX NUT DIN 985-M14-10-A3C ** **	701568
4	WASHER DIN125-A15-ST-A3C	703435
5	HEX BOLT DIN 931-M14X100-10.9-A3C	705826
6	BELLOWS AKS 3504	607133
7	HEX BOLT DIN 931-M12X75-8.8-A3C	701959
8	HEX NUT DIN 985-M12-10-A3C ** **	702750
9	BELLOWS AKS 1300	366356
10	ET-SET: KIT BUSHING OVERRUN **	1210131
11	PROFILE RING	371372
12	DRAW TUBE	571873
13	BUSH	370559

Item	Description	Part No.
14	SHOCK ABSORBER	583529
15	HEX NUT DIN 980-V M12-8-A3C ** **	704065
16	BUSH	625660
17	END STOP PLATE	581699
18	HOUSING *	*
19	HEX BOLT DIN 931-M12X120-8.8-A3C	701670
20	GREASE NIPPLE CONUS DIN 71412-AS 8X1	375900
21	GREASE NIPPLE CONUS DIN 71412-AS 6X1	700203
22	BELL CRANK (INCL. GREASE NIPPLE CONUS) iH = 90/27	380265
23	WASHER DIN 988-19X34X3	370693
24	BRAKE AWAY CABLE FOR HAND BRAKE LEVER	368605
25	HAND BRAKE LEVER INCL. BRAKE AWAY CABLE	220094
26	BEARING BOLT M12X1.5X106.5-VZ	581145

\* ONLY COMPLETE OVERRUN DEVICE AVAILABLE, SEE IMPRINT ZN.-NR.

\*\* ATTENTION: AFTER FITTING THE BEARING BUSHES MUST BE REAMED TO THE PARTICULAR DRAW BAR DIAMETER!

\*\*\* FOR SAFETY REASONS: SELF-LOCKING NUT AND SCREW WITH CHEMICAL SELF-LOCKING MUST BE USED ONCE. AFTER UNTIGHTEN ALWAYS USE A NEW SPARE.

provided	ETI-No.	changed	Change No.	Reason of the change	Revisions-No.
09.07.03	811410_en	31.07.2009	FREIGABE		A