

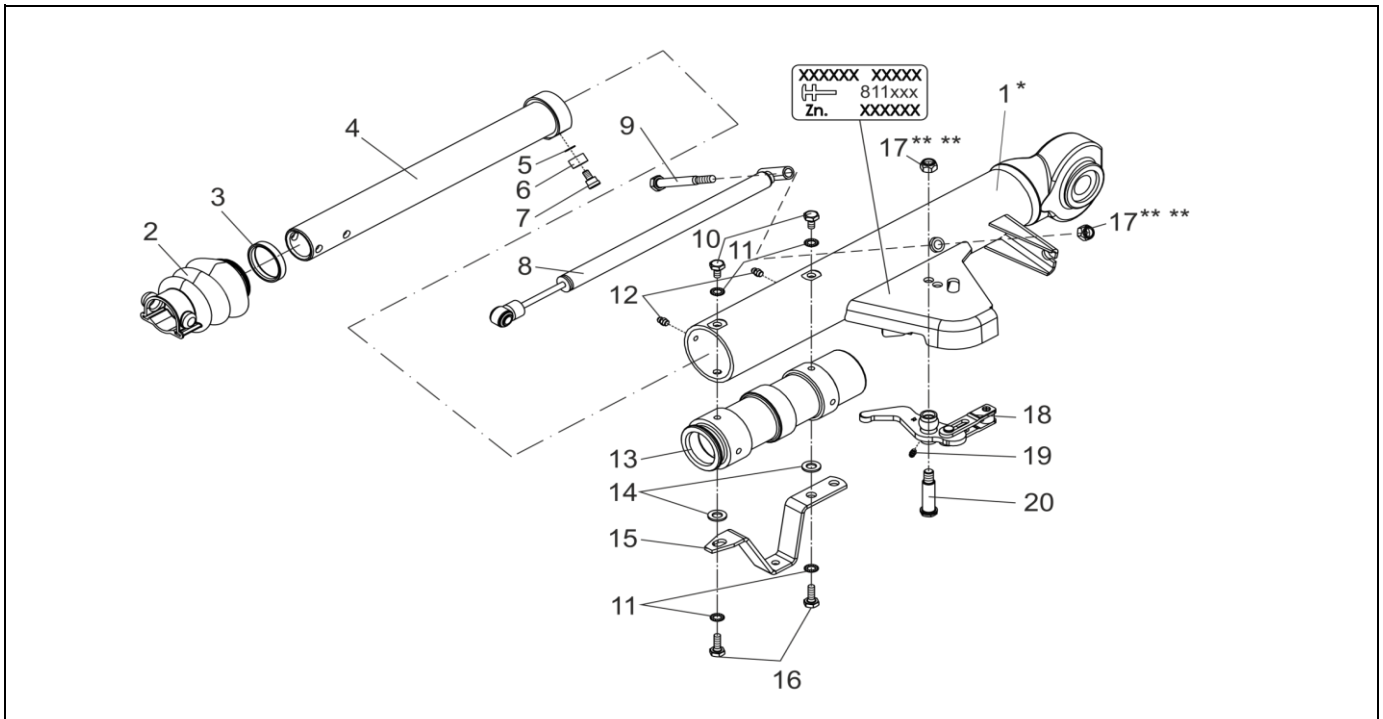
OVERRUN DEVICE TUBE 88.9X5.6 131R SPECIAL WITHOUT GAS SPRING AND COUPLING

ETI- No. 811124

(Specify the order with the ETI No.)

AL-KO

Spare Parts



Item	Description	Part No.
1	DRAWBAR TUBE 88.9X5.6	*
2	BELLOWS	366356
3	PROFILE RING	371372
4	DRAW TUBE	626248
5	SERRATED LOCK WASHERS DIN 6798 A8.4-A3C	703466
6	BUSH	583043
7	CYLINDER HEAD SCREW WITH HEXAGON SOCKET	583042
8	SHOCK ABSORBER	583528
9	HEX BOLT DIN 931-M12X110-8.8-A3C	700313
10	HEX BOLT DIN 933-M10X16-8.8-A3C	703783
11	SERRATED LOCK WASHERS A10.5-A3C	704095

Item	Description	Part No.
12	GREASE NIPPLE CONUS DIN 71412-AS 8X1	368461
13	BEARING CARTRIDGE	583046
14	WASHER DIN125-A13-A3C	700140
15	SUPPORT BRACKET	1224151
16	HEX BOLT DIN 933-M10X25-8.8-A3C	702739
17	HEX NUT DIN 985-M12-10-A3C ** **	702750
18	BELL CRANK (INCL. GREASE NIPPLE CONUS)	354238
19	GREASE NIPPLE CONUS DIN 71412-AS 6X1	700203
20	BEARING BOLT M12	625255

* ONLY COMPLETE OVERRUN DEVICE AVAILABLE, SEE IMPRINT ZN.-NR.

** ** FOR SAFETY REASONS: SELF-LOCKING NUT AND SCREW WITH CHEMICAL SELF-LOCKING MUST BE USED ONCE. AFTER UNTIGHTEN ALWAYS USE A NEW SPARE.

provided	ETI-No.	changed	Change No.	Reason of the change	Revisions-No.
06.11.96	811124_en	04.03.2010	FREIGABE		A
		19.08.2013/ÖJ	17491	POS.14,15,16 ADDED	B