

# DRAWBAR WITH GAS SPRING-ASSISTED HAND BRAKE LEVER ZAV1,6-5/2,0-5/2,7-4

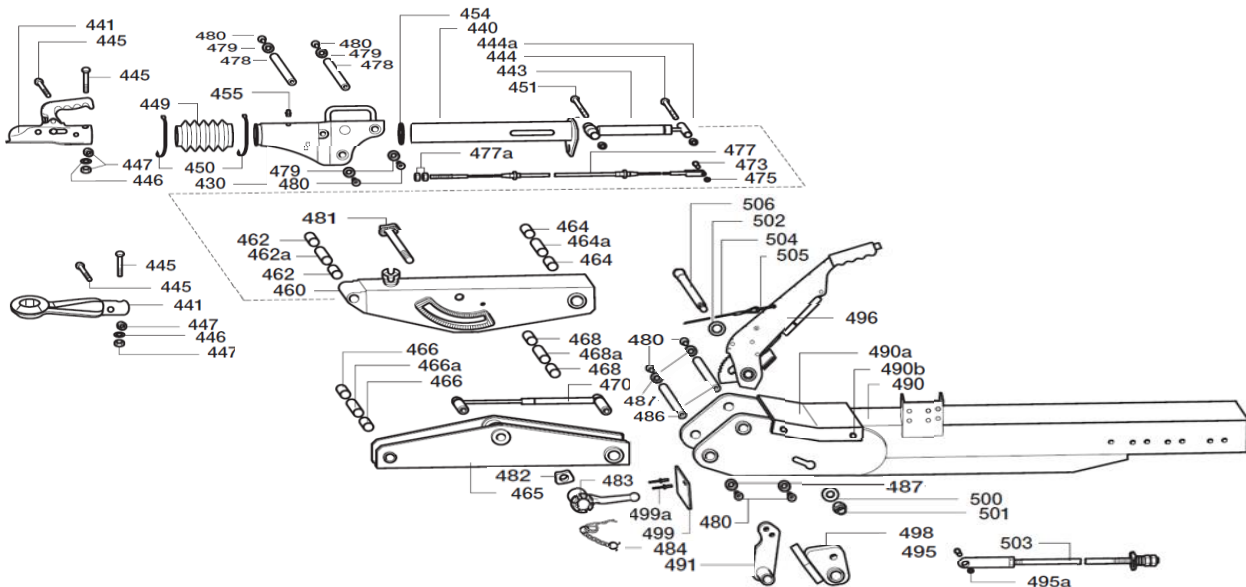
ETI- No. 827106

(Specify the order with the ETI No.)

47.29.47x.xxx / 47.36.47x.xxx / 47.43.47x.xxx



Spare parts



Item	Description	Material-No. (Part-No. BPW-FZT)
430	HOUSING FOR ZAV	4003064 03.031.03.26.0
440	PULL ROD FOR ZAV	4018094 05.399.32.14.0
441	COUPLING GA=3000KG WW30-D6 D=60	1860802 02.1801.58.10
441	EYE END 40,0 DIN-EYE D=45,8	4003412 05.398.40.45.0
443	SHOCK ABSORBER AE2,7-1_D 1200-1900KG FOR ZAV 1,6-5	4014931 02.3722.73.00
	SHOCK ABSORBER AE2,7-1_C 1500-2300KG FOR ZAV 2,0-5	4014930 02.3722.72.00
	SHOCK ABSORBER AE2,7-1_B 1860-2700KG FOR ZAV 2,7-4	4014922 02.3722.50.00
444 / 444a	HEXAGON SCR W M14x100 DIN931 8.8	705594 02.5022.17.82
445	HEXAGON SCR W M12x95_22 10.9	706325 03.340.11.12.0
	HEXAGON SCR W M12x90_22 10.9	706080 03.340.11.11.0
445a	HEXAGON SCR W M12x85_22 10.9	4018590 03.340.11.10.0
446	DISC D=25_13 FÜR R32,0 T=3	4016941 03.320.10.10.0
447	LOCKING NUT VM12 DIN980 10	705521 02.5220.14.12
449	BELLOW 60_74 L=125 (30-150)	4015593 03.130.09.15.0
450	CRAMP BAND 3,8x360 SCHWARZ	701422 02.3310.04.00
451	HEXAGON SCR W M12x75 DIN931 8.8	705427 02.5021.78.81
453	LOCKING NUT VM12 DIN980 8	705389 02.5220.14.82
454	O-RING 60x8 72NBR_872	4018513 02.5679.90.00
455	GREASE NIPPLE AS8x1 DIN71412	4018570 02.6850.01.02
460	AJUSTABLE ROD 600LG ABOVE HOT-DIP GALVANIZED	4008163 05.389.60.42.0
	AJUSTABLE ROD 800LG ABOVE HOT-DIP GALVANIZED	4008155 05.389.60.36.0
462 / 466	BUSH 22_25x20 PAP2220 P10 INA	4014770 02.0314.01.00
	BUSH D25_0_22,2x32	4015504 03.112.90.06.0
464 / 468	BUSH 30_34x30 PAP3030 P10 INA	4014771 02.0314.02.00
	BUSH D34_0_30,2x58	4015505 03.112.90.07.0
465	AJUSTABLE ROD 600LG UNDER HOT-DIP GALVANIZED	4008165 05.389.60.43.0
	AJUSTABLE ROD 800LG UNDER HOT-DIP GALVANIZED	4008157 05.389.60.37.0
470	GAS SPRING DAMPER FOR AJUSTABLE ROD 600LG	4018131 05.801.90.85.0
	GAS SPRING DAMPER FOR AJUSTABLE ROD 800LG	4018129 05.801.90.84.0
473	BOLT A8x19,5x16 SXN07VE	4014959 02.5850.25.02
475	SL-LOCK 8SXN 08	706971 02.3301.02.02

Item	Description	Material-No. (Part-No. BPW-FZT)
477	BRAKE CABLE WITH YOKE M8 910_1290	4017292 05.089.03.65.0
477a	HEXAGON SCREW M8 DIN934 8	705377 02.5202.12.82
478	BOLT RD22x106,5 M10x22 (2x)	4015439 03.086.11.16.0
479	DISC 11_30x8 RD21x90GRD	4016958 03.321.11.02.0
480	COUNTERSUNK SCREW M10x20DIN7991 8.8	4018376 02.5041.22.91
481	THREAD BOLT WITH SEGMENT M24x1,5	4006802 05.177.52.16.0
482	SEGMENT 217,42_322,8 5Z=26GRD RD24,5	4017021 03.345.36.12.0
483	CLAMPING NUT GALV M24X1,5	4003206 03.265.04.08.0
484	CIRCLIPS D=5,6	4018029 05.350.00.21.0
486	BOLT RD30x161 M10x22 (2x)	4015440 03.086.11.17.0
487	DISC 11_40x8 RD21x90GRD	4016959 03.321.11.03.0
490	DRAW BAR TUBE	UPON REQUEST
490a	SHAPED PLATE FOR ZAV 2,7-4	4015690 03.160.04.59.0
490b	SELF-TAPPING SCREW A M5x10 DIN7513 ST NUR FÜR ZAV2,7-4	no more available
491	LEVER KOMPLETTE 100_35_87,5_35 FOR ZAV1,6-5 AND ZAV2,0-5	4006904 05.190.56.46.0
	LEVER KOMPLETTE 100_35 NUR FÜR ZAV2,7-4	4006869 05.190.38.65.0
495	BOLT A10x24,5x20 SXN07VE	4014960 02.5850.26.02
495a	SL-LOCK A10x24,5x20 SXN07VE	4018315 02.3301.04.02
496	HAND BRAKE LEVER 3 GRAD	4017523 05.203.10.18.0
498	LEVER	no more available
499	PLATE 119x060x3 FOR ZAV1,6-5 AND ZAV2,0-5	4016560 03.293.01.57.0
	PLATE 119x060x3 FOR ZAV2,7-4	4016559 03.293.01.51.0
499a	POP RIVET 4x12,5 ALMg5	4018537 02.5856.25.00
500	DISC D13 DIN433 140HV	706459 02.5404.13.04
501	LOCKING NUT VM12 DIN980 10	705521 02.5220.14.12
502	DISC D19 DIN125 200HV	706899 02.5401.19.04
503	PULL ROD ASSEMBLY	AUF ANFRAGE
504	CABLE 1790LG FOR AJUSTABLE ROD 600LG	4018008 05.327.20.08.0
	CABLE 2065LG FOR AJUSTABLE ROD 800LG	4018009 05.327.20.09.0
505	SAFTY RING DR4 D=35 F MIN=3500N	4016905 03.310.70.09.0
506	THREAD BOLT M12 RD16_18 LG220 SW19	no more available

\* FOR SAFETY REASONS: SELF-LOCKING NUT AND SCREW WITH CHEMICAL / MECHANICAL SELF-LOCKING MUST BE USED ONCE. AFTER UNTIGHTEN ALWAYS USE A NEW SPARE.

provided	ETI-No.	changed	Change No.	Reason of the change	Revisions-No.
22.02.2019 M.Altgiew	827106_en				