

DRAWBAR WITH OVERRUN HITCH ZAV 2,7-1/3,5-1

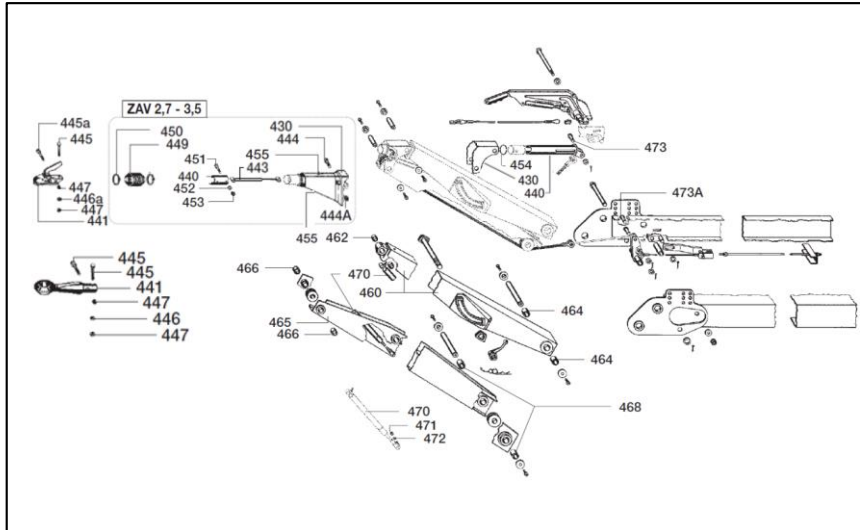
ETI- No. 827105

(Specify the order with the ETI No.)

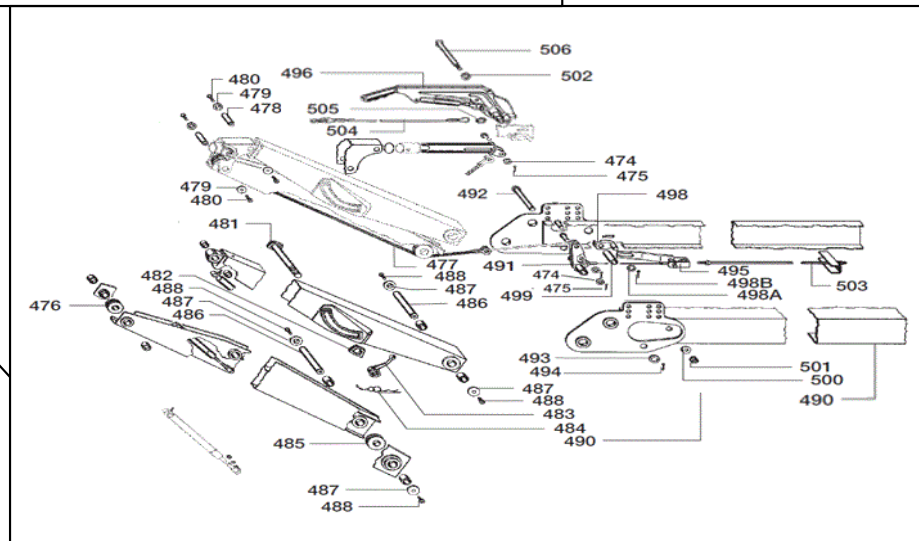
47.43.47x.xxx / 47.51.47x.xxx



Spare parts



827105-1



827105-2

Item	Description	Material-No. (Part-No. BPW-FZT)
1	TOWBARASSEMBLY ZAV 2,7-1/3,5-1 POS. 430 TO 473	827105-1

Item	Description	Material-No. (Part-No. BPW-FZT)
2	TOWBARASSEMBLY ZAV 2,7-1/3,5-1 POS. 474 TO 506	827105-2

* FOR SAFETY REASONS: SELF-LOCKING NUT AND SCREW WITH CHEMICAL / MECHANICAL SELF-LOCKING MUST BE USED ONCE. AFTER UNTIGHTEN ALWAYS USE A NEW SPARE.

provided	ETI-No.	changed	Change No.	Reason of the change	Revisions-No.
19.03.2018 P.S.	827105_en				