

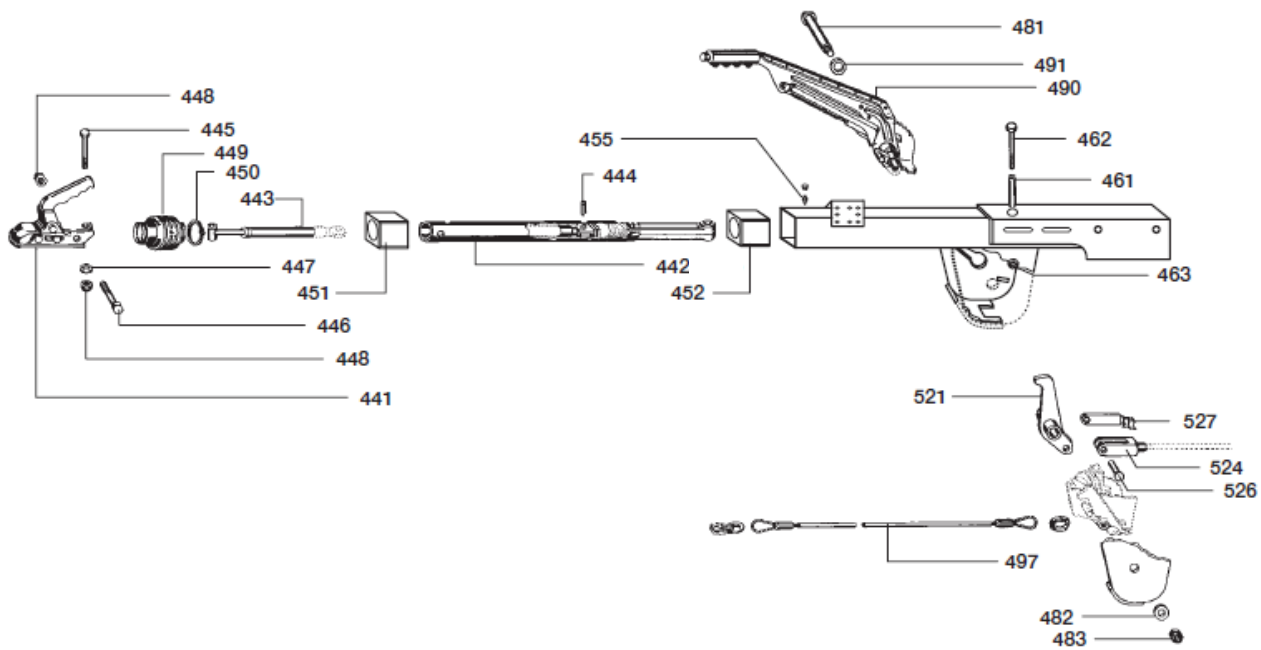
OVERRUN DEVICE ZAAQ 1,35-1 a. 1,6 -1 48.25.181.xxx / 48.29.181.xxx

ETI- No. 827102

(Specify the order with the ETI No.)

AL-KO

Spare parts



Pos.	Bezeichnung	Material-Nr. (Sach-Nr. BPW- FZT)	Pos.	Bezeichnung	Material-Nr. (Sach-Nr. BPW- FZT)
441	COUPLING GA=1500KG EM150R-A D=46 D=12,5	1860781 02.1801.32.10	461	TUBE 18x2x073 LG	4003248 03.301.00.07.0
442	PULL ROD	4018111 05.399.69.11.0	462	HEXAGON SCREW M14x95 DIN931 10.9	706873 02.5022.20.12
443	SHOCK ABSORBER HUB=90 PAV_SR1,35-X (ZAAQ 1,35-1)	4014908 02.3722.27.01	463	LOCKING NUT M14 DIN985 8	706948 02.5215.19.82
	SOCK ABSORBER HUB=90 PAV_SR1,35-MX1 (ZAAQ 1,6-1)	4014923 02.3722.52.01	481	THREAD BOLT M12x18 L=124,5	4016017 03.177.11.42.0
444	ADAPTER SLEEVE ISO 8752 8x28-ST	706985 02.6016.05.90	482	DISC DIN125 13 200HV	706895 02.5401.13.04
445	HEXAGON SCREW M12x70_22 10.9	4018587 03.340.11.07.0	483	LOCKING NUT M12 DIN985 8	705386 02.5215.14.82
446	HEXAGON SCREW M12x75_22 10.9	4018588 03.340.11.08.0	490	HAND BRAKE LEVER	4006917 05.203.03.46.0
447	DISC	4016897 03.310.30.52.0	491	DISC DIN125 19 200HV	706899 02.5401.19.04
448	LOCKING NUT M12 DIN985 8	705386 02.5215.14.82	497	SAFTY CABLE L=1055 RING48	4018013 05.327.20.26.0
449	BELLO	4015587 03.130.08.21.0	521	RIVERSING LEVER	no more available
450	CLAMPING BAND 4,8x360	701422 02.3310.04.00	524	YOKE COMPLETE	no more available
451 452	BEARING VKT 64.0_DI=46.2x50 LG	4015166 03.030.30.06.0	526	BOLT	4014787 02.0335.23.00
455	GREASE NIPPLE A A 6 H1 AS 71042 L=11	4018576 02.6850.22.00	527	SL-LOCK 10SXN 08	4018315 02.3301.04.02

* FOR SAFETY REASONS: SELF-LOCKING NUT AND SCREW WITH CHEMICAL / MECHANICAL SELF-LOCKING MUST BE USED ONCE. AFTER UNTIGHTEN ALWAYS USE A NEW SPARE.

provided	ETI-No.	changed	Change No.	Reason of the change	Revisions-No.
28.03.18 J.B.	827102_en				