

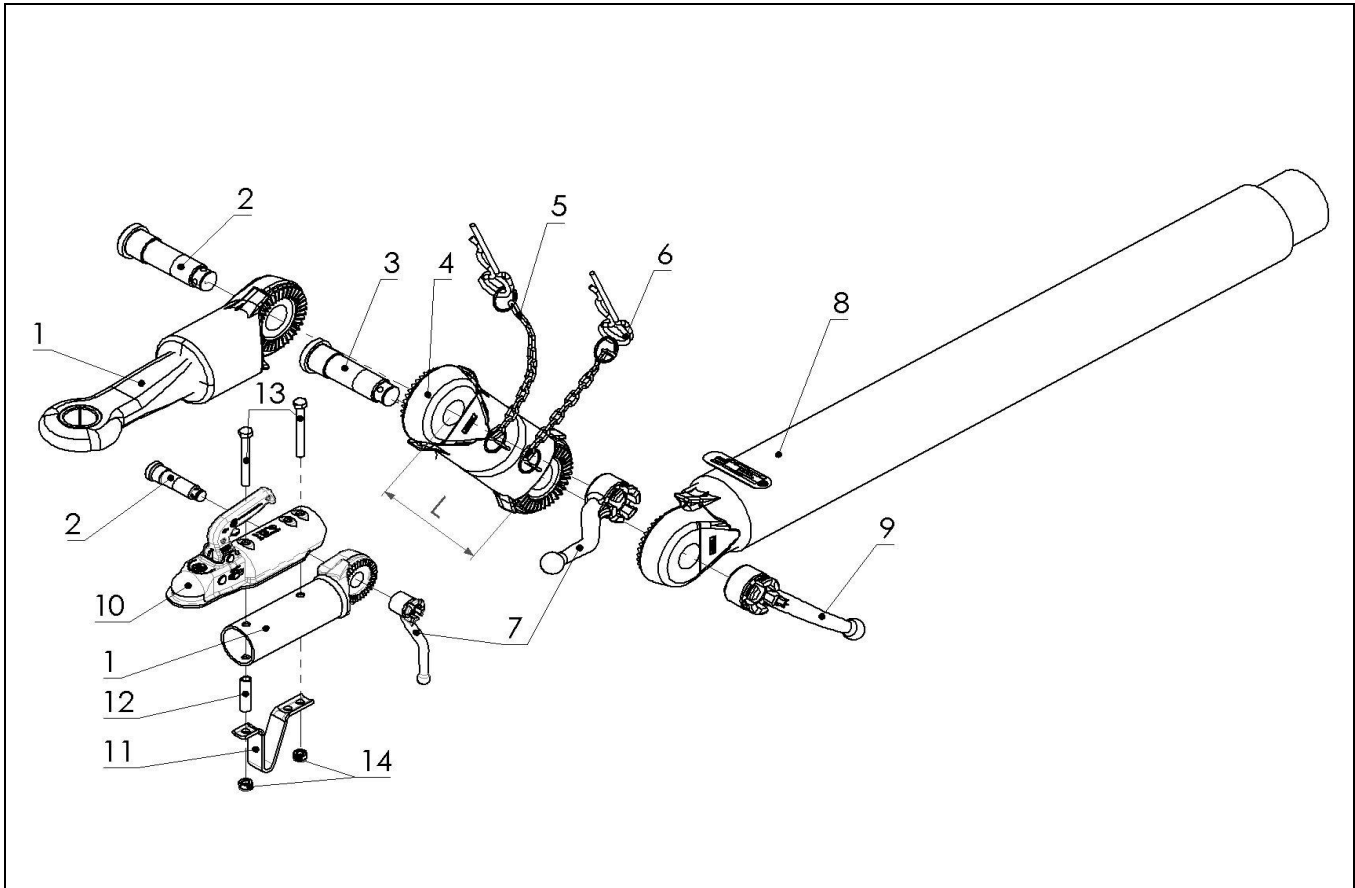
DRAWING GEAR ZOV 1,2-1.1 / 5,0-1.1

ETI- No. 827024

(Specify the order with the ETI No.)

AL-KO

Spare parts



Item	Description	Material-No. (Part-No. BPW-FZT)
	ZAV 1,2-1.1	
1	DRAWBAR HEAD ASSEMBLY PRIMED	4006473 (05.117.30.05.0)
2	THREAD BOLT	4016036 (03.177.94.04.0)
3	THREAD BOLT	4016036 (03.177.94.04.0)
4	ADJUSTABLE TORQUE ARM L=300 D=70 PRIMED	4011329 (05.390.40.13.0)
	ADJUSTABLE TORQUE ARM L=400 D=70 PRIMED	4011330 (05.390.40.15.0)
	ADJUSTABLE TORQUE ARM L=500 D=70 PRIMED	4018027 (05.350.00.12.0)
5	CIRCLIPS	4018026 (05.350.00.11.0)
6	CIRCLIPS	4018026 (05.350.00.11.0)
7	CLAMPING NUT GALV M24X1,5 VZ	4003206 (03.265.04.08.0)
8	DRAWBAR TUBE	AUF ANFRAGE
9	CLAMPING NUT GALV M24X1,5 VZ	4003206 (03.265.04.08.0)
10	COUPLING EM 150 R-G	1860783 (02.1801.41.10)
11	PARK BRACKET	1860680 (02.3708.02.00)
12	TUBE	4016821 (03.300.72.13.0)
13	BOLT 12X100 DIN931- 8.8 ZN8DISP	705421 (02.5021.86.82)
14	NUT CRIMP 12 DIN980-V-10 ZP	705521 (02.5220.14.12)

Item	Description	Material-No. (Part-No. BPW-FZT)
	ZAV 5,0-1.1	
1	DRAWBAR HEAD ASSEMBLY DIN-40 PRIMED	4006459 (05.117.01.06.0)
2	THREAD BOLT	4016037 (03.177.95.02.0)
3	THREAD BOLT	4017005 (03.340.06.03.0)
4	ADJUSTABLE TORQUE ARM L=550mm LG. PRIMED	4008171 (05.389.60.53.0)
5	CIRCLIPS	4018027 (05.350.00.12.0)
6	CIRCLIPS	4018025 (05.350.00.09.0)
7	CLAMPING NUT BLACK	4003208 (03.265.05.02.0)
8	DRAWBAR TUBE	AUF ANFRAGE
9	CLAMPING NUT M36X1,5 PRIMED	4009825 (03.265.06.03.7)
10		
11		
12		
13		
14		
15		
16		

* FOR SAFETY REASONS: SELF-LOCKING NUT AND SCREW WITH CHEMICAL / MECHANICAL SELF-LOCKING MUST BE USED ONCE. AFTER UNTIGHTEN ALWAYS USE A NEW SPARE.

provided	ETI-No.	changed	Change No.	Reason of the change	Revisions-No.
31.01.18 P.S.	827024_en				