

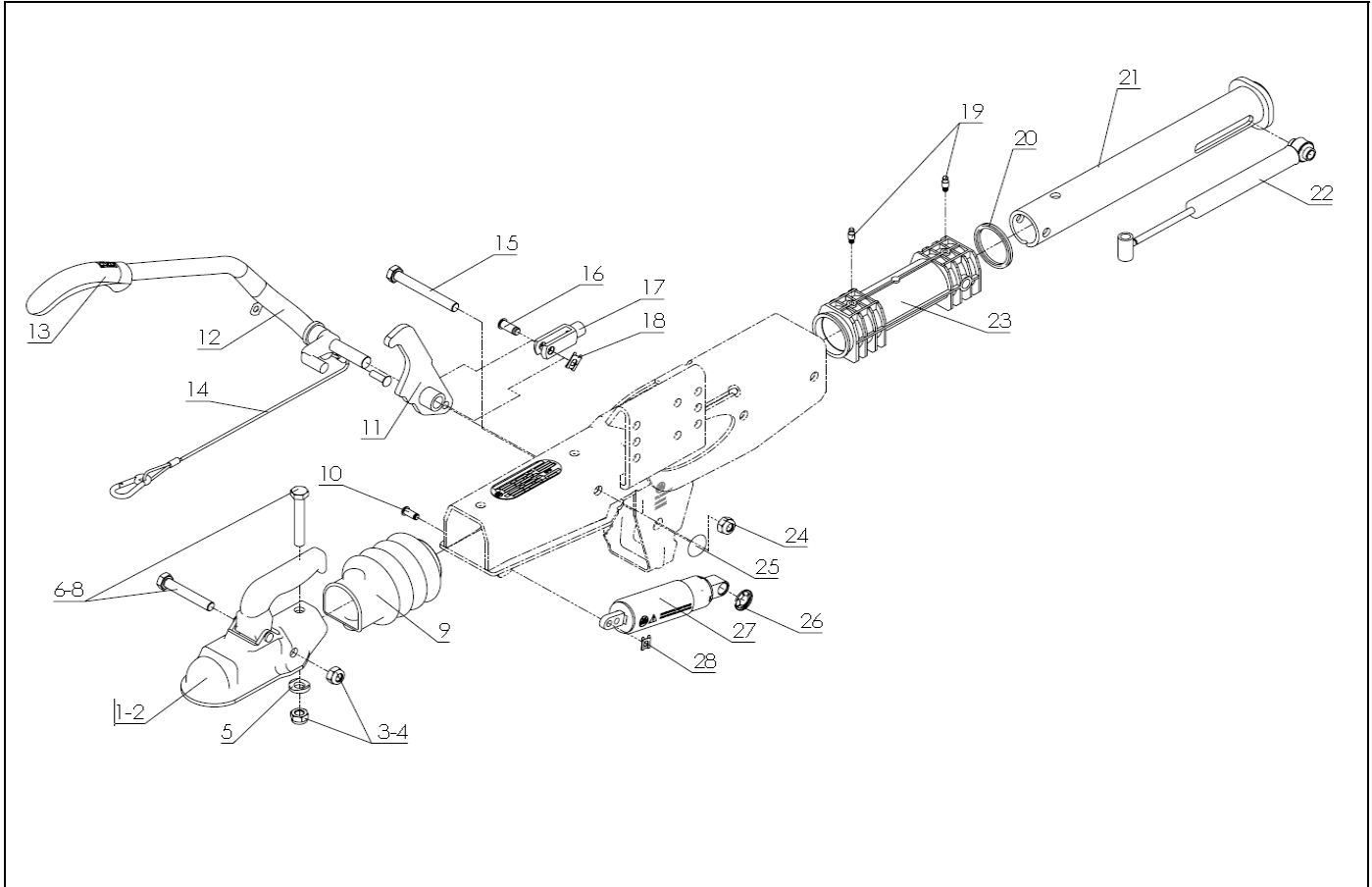
OVERRUN HITCH ZAAQ 2,0-3

ETI- No. 827006

(Specify the order with the ETI No.)

AL-KO

Spare parts



Item	Description	Material-No. (Part-No. BPW-FZT)
1	COUPLING EM200R-B MONTAGETEILE POS. 3, 4, 5, 9	1860788 (02.1801.36.10)
2	BALL COUPLING EM300R-B MONTAGETEILE POS. 3, 5, 6, 9	1860818 (02.1801.28.10)
3	LOCKING NUT M12 AS DIN 980 8VZ **	705389 (02.5220.14.82)
4	LOCKING NUT M12 AS DIN 980 8VZ **	705390 (02.5220.14.82)
5	DISC D=25_13	4016942 (03.320.10.11.0)
6	HEXAGON SCREW M12x75 DIN931 10.9VZ	705427 (02.5021.78.81)
7	HEXAGON SCREW M12x80 DIN931 10.9VZ	706358 (02.5021.89.13)
8	HEXAGON SCREW M12x85 DIN931 10.9VZ	706866 (02.5021.90.13)
9	BELLOW BLUE	4015594 (03.130.09.16.0)
10	BUTTON-HEAD RIVET	4018531 (02.5803.83.06)
11	LEVER	4006891 (05.190.39.55.0)
12	HAND BRAKE LEVER	4017547 (05.203.30.73.0)
13	HANDLE	4018293 (02.1404.19.00)
14	SAFTY CABLE WITH BUMP STOP AND SPRING CLIP	4018021 (05.327.30.02.0)

Item	Description	Material-No. (Part-No. BPW-FZT)
15	HEXAGON SCREW M12x100 DIN931 10.9VZ	706325 (02.5021.86.13)
16	BOLT	4014960 (02.5850.26.02)
17	YOKE	706908 (02.1201.02.12)
18	SL-LOCK	4018315 (02.3301.04.02)
19	GREASE NIPPLE	4018577 (02.6850.23.00)
20	RING	4016937 (03.311.20.38.0)
21	PULL ROD	4018118 (05.399.69.87.0)
22	SHOCK ABSORBER	4014934 (02.3722.77.00)
23	BEARING *	4015170 (03.030.30.10.0)
24	HEXAGON SCREW M12 WIE DIN 980 8VZ **	705389 (02.5220.14.82)
25	LOCKING DISC 18	4014951 (02.5450.89.00)
26	LOCKING DISC 14	4014950 (02.5450.88.00)
27	SPRING BRAKE	4018077 (05.397.68.60.0)
28	LOCK	4018315 (02.3301.04.02)

* ATTENTION: AFTER INSTALLATION OF THE BUSHES THE INNER DIAMETER MUST BEI REAMED TO PARTICULAR SIZE OF THE DRAW TUBE.

** FOR SAFETY REASONS: SELF-LOCKING NUT AND SCREW WITH CHEMICAL / MECHANICAL SELF-LOCKING MUST BE USED ONCE. AFTER UNTIGHTEN ALWAYS USE A NEW SPARE.

provided	ETI-No.	changed	Change No.	Reason of the change	Revisions-No.
31.01.18 J.B.	827006_en				