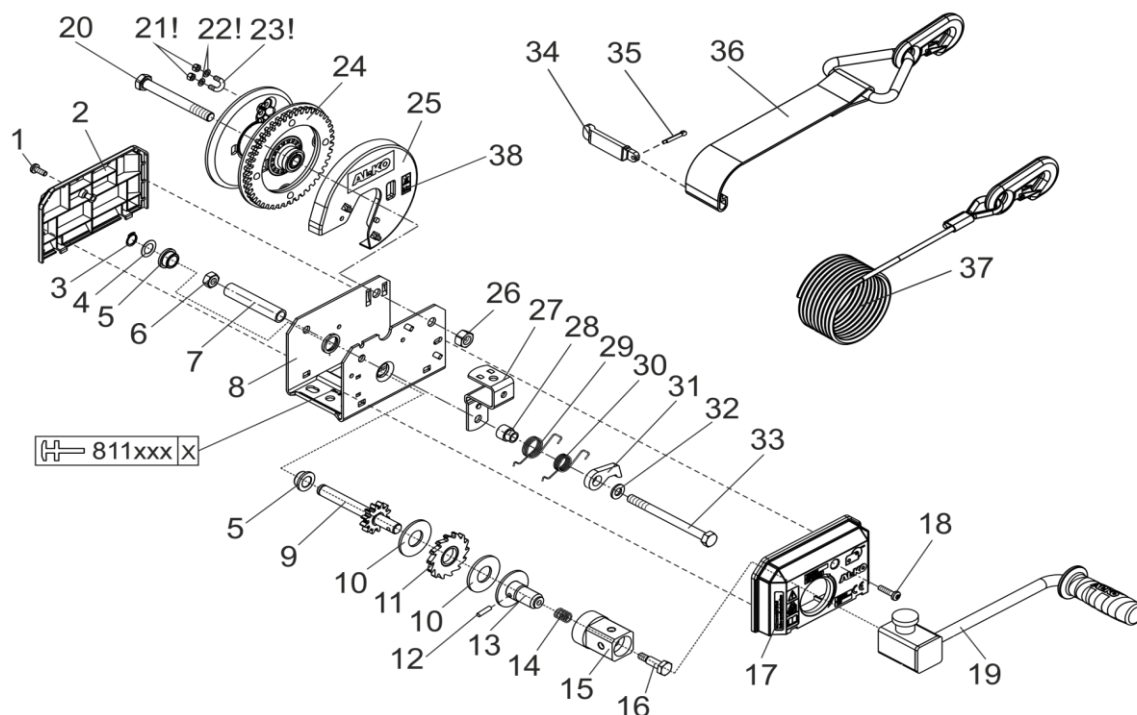


WINCH OPTIMA TYP 501 PLUS A WITH WINCH CABLE (OPTIONAL) AND TEXTILE STRAP **AL-KO**

ETI- No. 811702A

(Specify the order with the ETI No.)

Spare Parts



Item	Description	Part No.
1	SCREW WITH INSIDE TORX M6X16	694516
2	COVER REAR	352953
3	LOCKING RING DIN 471-14X1-VZ	701001
4	STEEL WASHER 0.5MM	352110
5	BEARING BUSH TYPE 351/501	352439
6	HEX NUT DIN 985-M10-8	694490
7	SPACER TUBE	694529
8	HOUSING TYPE 501	NO SPARE PART
9	DRIVE SHAFT	352952
10	BRAKE DISC	352228
11	RATCHET WHEEL	352701
12	CYLINDER NOTCH PIN ISO 8740-5X20-VZ	700811
13	CRANK SOCKET	352950
14	PRESSURE SPRING	352291
15	CRANK NUT WINCH	352890
16	SHOULDER BOLT	352889
17	GEAR COVER	352954
18	SCREW WITH INSIDE TORX M6X25	694517
19	CRANK TYPE 501 A	694531
20	HEX BOLT DIN 931-M12X106	352964

Item	Description	Part No.
21	HEX NUT DIN 934-M5-8	706142
22	WASHER Ø5.3X10X0.5	706143
23	ROPE CLAMP	694523
24	ROPE CYLINDER TYPE 501	352949
25	COVER ROPE CYLINDER	352966
26	HEX NUT DIN 985-M12-8	694491
27	SUPPORT BRACKET	352886
28	DISTANCE BUSH	352961
29	TORSION SPRING	352821
30	TORSION SPRING	352822
31	WINCH CATCH	352882
32	WASHER DIN125-ST-A10.5	706127
33	HEX BOLT DIN 931-M10X125-8.8	706138
34	FLAT CONNECTION TYPE 501	694732
35	SPLINT PIN DIN 94 3.2X16-A2	706231
36	TEXTILE STRAP 500KG (7M)	1730043
37	WINCH CABLE 500KG (20M)	1730139
	500KG (10M)	1730138
38	LABEL (NOTE)	352866

! = PARTS ONLY USED WINCH

provided	ETI-No.	changed	Change No.	Reason of the change	Revisions-No.
29.07.14ÖJ	811702A_en		FREIGABE		A