

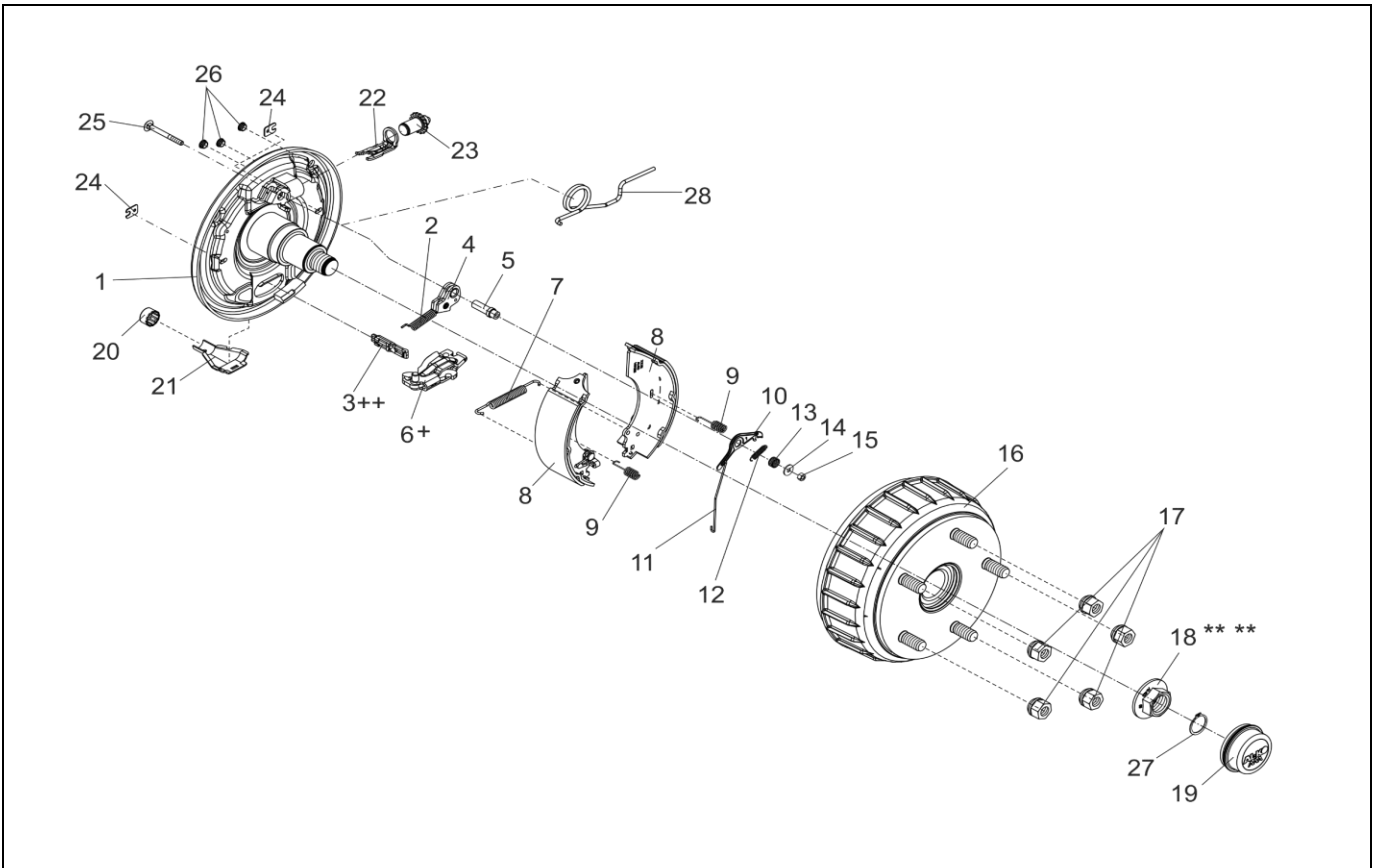
WHEEL BRAKE 2361 AAA STANDARD COMPLETE WITH STUB AXLE

ETI- No. 811895

(Specify the order with the ETI No.)

AL-KO

Spare Parts



Item	Description	Part No.
1	BRAKING PLATE COMPLETE WITH STUB AXLE LEFT 2361 AAA (Ø54 BORE) RIGHT 2361 AAA (Ø54 BORE)	/ /
2	TENSION SPRING	2187370003
3	CONNECTION EYE	604262
4	AUTO-REVERSE LEVER LEFT RIGHT	571386 571387
5	BEARING BOLT 2051/2361 AAA	1650429
6	SPREAD HINGE LOCK 2051/2361 AAA LEFT 2051/2361 AAA RIGHT	1650407 1650408
7	TENSION SPRING	2082000007
8	SET BRAKE JAW FOR AXLE INCL (COVER PLATE,TENSION SPRING,PRESSURE SPRING)	1730332
9	PRESSURE SPRING	2088800003
10	ADJUSTING LEVER LEFT 2361 AAA RIGHT 2361 AAA	1651290 1651291
11	CONNECTION WIRE 2361 AAA	1651293
12	TENSION SPRING 2051/2361 AAA	1651237

Item	Description	Part No.
13	CONTACT PRESSURE SPRING 2051/2361 AAA	694449
14	WASHER DIN 9021-ST-A-A6.4-ZN8DISP	705405
15	HEX NUT DIN 980-V M6-8-ZN8DISP	706012
16	BRAKE DRUM COMPLETE WITH BEARINGS Ø165.1X5	578835
17	M16 WHEEL NUT 80° CONICAL CUSTOMER SUPPLY	WR056
18	FLANGE NUT M27X2-ZN8DISP	582506
19	END CAP Ø65 2361AAA	1653033
20	PROTECTIVE CAP	371389
21	CUP	371387
22	BOW PRESSURE	368361
23	ADJUSTING SCREW AND THE ADJUSTING NUT LEFT 2051/2361 AAA	1650416
	ADJUSTING SCREW AND THE ADJUSTING NUT RIGHT 2051/2361 AAA	1650417
24	COVER PLATE	2382610002
25	CARRIAGE BOLT DIN 603-M6X60-8.8-ZN8DISP	706316
26	STOPPER RED	694430
27	D 1400 CIRCLIP DIN 471/BS 3673 PART 4 CUSTOMER SUPPLY	6105
28	TORSION SPRING	
		LEFT AAA RIGHT AAA
		1806463 1807220

/ SEPARATELY NOT AVAILABLE!!!

+ THE CENTRE OF ROTATION OF THE BRAKE LEVER MUST BE FIXED ON THE SAME SIDE AS THE BOLT OF THE AUTO-REVERSE.

++ THE OPEN SIDE OF THE CONNECTION EYE FOR THE BOWDEN CABLE MUST SHOW TO THE CENTRE OF ROTATION OF THE BRAKE LEVER.

THE RETAIL OF INDIVIDUAL BRAKE SHOES IS NOT PERMITTED BY EU DIRECTIVE FROM 1st OF OCTOBER 2002.

ATTENTION: THE SET INCLUDES FOUR BRAKE SHOES AND THE APPENDANT TENSION SPRINGS, PRESSURE SPRINGS AND COVER PLATES.

provided	ETI-No.	changed	Change No.	Reason of the change	Revisions-No.
28.03.17/ÖJ	811895_en		FREIGABE		A
		30.10.18ÖJ	30642	TORSION SPRING (1806463,1807220) NEW ADDED	B