

OVERRUN DEVICE V

with hydraulic brake transmission device

MOUNTING

The following are required to mount the hydraulic brake transmission:

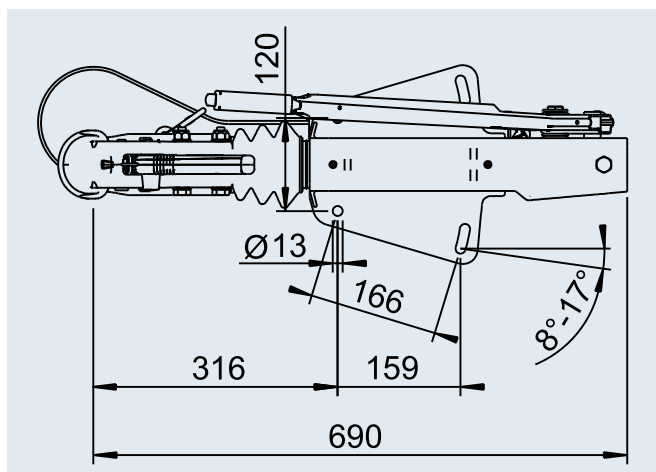
- I Ventilating device (with adapter for expansion tank)
- I Flaring unit for brake line (with pin 4 x 7.5)

After mounting the chassis, fill and bleed the brake system.

Important! The braking effect will not be sufficient if the brake system has not been bled or only bled insufficiently! **Risk of accidents!**

An independent mechanical parking brake is specified for trailers with a hydraulic brake transmission device.

The axles offered cannot be connected centrally with a central tube drawbar. A central tube drawbar must be integrated in the mounting frame or, alternatively, the offered axles must be connected using a V drawbar.



SAP: AE KPLV OB 251S HYD AK270 GASF

1. Overrun device V

Part no.	Type	Gross weight kg	Nose load kg	Installation	Can be combined with AL-KO wheel brake	Change-over relay lever?	Hand-brake lever	ECE test report no. overrun device	ECE type approval no. drawbar installation	Coupling head mounted type/version
1 253 082	-V- 251 S	1,500 – 2,600	100	Top	2051	yes 2361/3081	Gas spring	361-0044-97 251 S/A	E1 55R-01 0227 251 S	AK 270
1 211 677	-V- 2.8 VB	2,500 – 3,500	150	Top	2361	No	Gas spring	361-0045-97	E1 55R-01 0384 351 S	AK 351

2. Hydraulic lines attachment kit

Part no.	Designation/content
1 310 680	Brake line 2 x 2000 mm + small parts (see scope of delivery)

3. Slave cylinder attachment kit for tandem axle A-frame chassis

Part no.	Designation/content	For axle beam Ø mm
1 310 488	Screw-on bracket, slave cylinder + small parts (see technical drawing)	97 (= max. GA tandem 2600 kg)
1 310 907	Screw-on bracket, slave cylinder + small parts (see technical drawing)	110 (= max. GA tandem 3500 kg)