





# OVERRUN DEVICE V

1,550 to 3,000 kg



**SAP:** AE KPL V ST UN 251G AK301 GASF

**AE V 251G steel with PROFIL V AK 301**

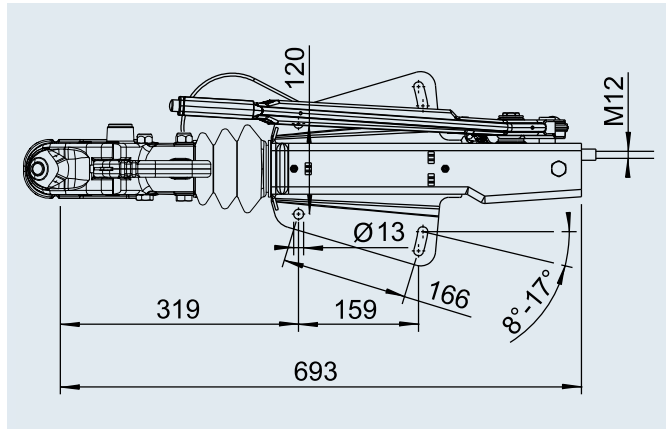
Part no.	Type	Gross weight in kg	Nose load in kg	Drawbar installation version	Change-over relay lever?	Can be combined with AL-KO wheel brake	Hitch mounted				
1 251 288	251G steel	1,550 – 3,000	120	bottom	No	1637 / 2051	AK 301	17	–	40	20

**ECE test report no.**

Overrun device: 361-0043-97





**ECE type approval no.**

Drawbar installation: E1 55R-01 0466



**SAP:** AE KPL V ST OB 251G DINÖSE GASF

**AE V 251G steel with DIN eye**

Part no.	Type	Gross weight in kg	Nose load in kg	Drawbar installation version	Change-over relay lever?	Can be combined with AL-KO wheel brake	Hitch mounted				
249 250	251G steel	1,550 – 3,000	120	top	No	1637 / 2051	DIN eye	18	–	40	20

**ECE test report no.**

Overrun device: 361-0043-97

**ECE type approval no.**

Drawbar installation: E1 55R-01 0466

