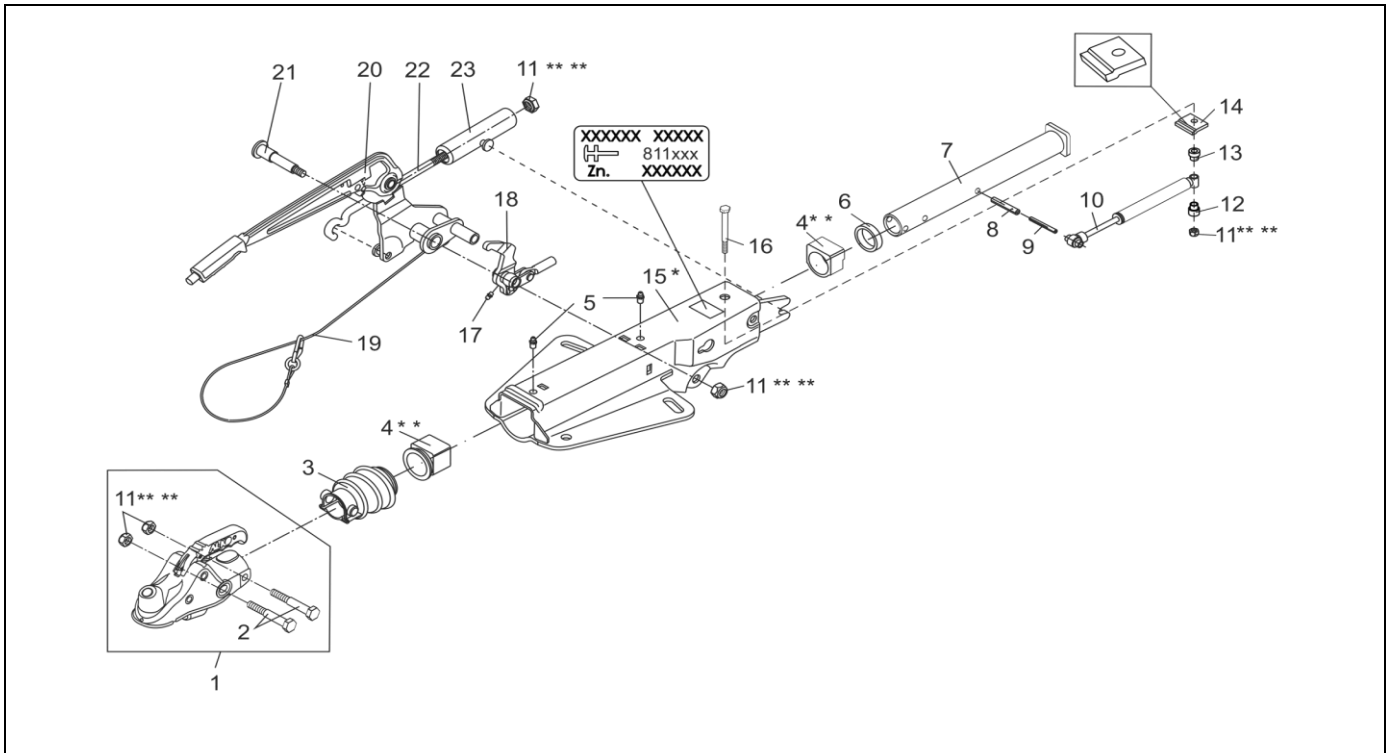


OVERUN DIVICES V 251G AK301 WITH SPING CYLINDER AND DEAD POINT LEVER TOP ASSEMBLY

ETI- No. 811790

(Specify the order with the ETI No.)

AL-KO
Spare Parts



Item	Description	Part No.
1	COUPLING AK 301 INCL. (NUTS,BOLTS)	1350228
2	HEX BOLT DIN 931-M12X85-8.8-ZN8DISP	705442
3	BELLOWS	366356
4	ET-SET: KIT BUSHING OVERRUN **	1210131
5	GREASE NIPPLE CONUS DIN 71412-AS 8X1	375900
6	PROFILE RING	371372
7	DRAW TUBE	1351983
8	CLAMPING PIN DIN 1481-12X48	704408
9	CLAMPING PIN DIN 1481-7X48	704407
10	SHOCK ABSORBER	372641
11	HEX NUT DIN 985-M12-10-ZN8DISP ***	705526
12	DISTANCE BUSH	647900

Item	Description	Part No.
13	DISTANCE BUSH	647903
14	END STOP PLATE	581699
15	HOUSING	*
16	HEX BOLT DIN 931-M12X90-8.8-ZN8DISP	705434
17	GREASE NIPPLE CONUS DIN 71412-AS 6X1	700203
18	BELL CRANK (INCL. GREASE NIPPLE CONUS) iH = 90/33.5	626829
19	BRAKE AWAY CABLE FOR HAND BRAKE LEVER	368605
20	HAND BRAKE LEVER INCL. BRAKE AWAY CABLE (DEAD POINT)	645420
21	BEARING BOLT M12X1.5X93-VZ	607018
22	HOOK BAR	607013
23	SPRING CYLINDER	645388

* ONLY COMPLETE OVERRUN DEVICE AVAILABLE, SEE IMPRINT ZN.-NR.

** ATTENTION: AFTER FITTING THE BEARING BUSHES MUST BE REAMED TO THE PARTICULAR DRAW BAR DIAMETER!

*** FOR SAFETY REASONS: SELF-LOCKING NUT AND SCREW WITH CHEMICAL SELF-LOCKING MUST BE USED ONCE. AFTER UNTIGHTEN ALWAYS USE A NEW SPARE.

provided	ETI-No.	changed	Change No.	Reason of the change	Revisions-No.
08.10.15ÖJ	811790_en		FREIGABE		A