

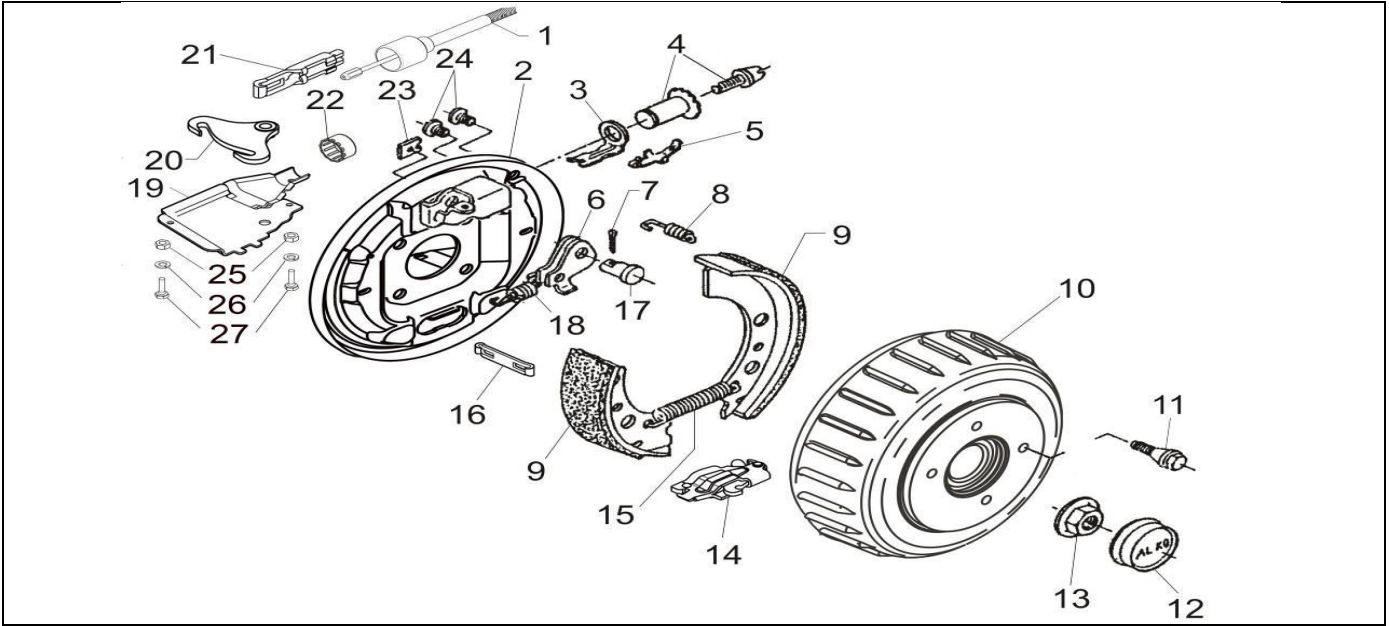
# WHEEL BRAKE 2361 INNOVAN BUILDING KIT

ETI- No. 811522A

(Specify the order with the ETI No.)

**AL-KO**

Spare Parts



Item	Description	Drawing No.
1	MOUNTABLE BOWDEN CABLE 1320 / 1516 LONG	247287
2	BRAKING PLATE LEFT 2361 A	692361
	RIGHT 2361 A	692362
3	BOW PRESSURE	368361
4	ADJUSTING SCREW AND THE ADJUSTING NUT	21873708
5	COMPOUND SPRING	368405
6	AUTO-REVERSE LEVER LEFT	571386
	RIGHT	571387
7	SPLINT PIN DIN 94 4X20-VZ	700192
8	PRESSURE SPRING	2088800003
9	SET BRAKE JAW FOR AXLE INCL (COVER PLATE,TENSION SPRING,PRESSURE SPRING)	1224393
10	BRAKE DRUM LEFT COMPLETE WITH BEARINGS Ø112X5 M12x1.5	573194
	RIGHT COMPLETE WITH BEARINGS Ø112X5 M12x1.5	690673
	SPARE PARTS SET: 1X BEARING, 1X CIRCLIP, 1X FLANGE NUT	1224805
11	WHEEL BOLT	SUPPLY PART Fa.LMC
12	END CAP Ø65	582505
13	FLANGE NUT M27X2	*** 582506
14	SPREAD HINGE LOCK 2051	+ 571510
15	TENSION SPRING	1362597
16	CONNECTION EYE (NON-STANDARD)	1361692
17	BEARING BOLT	368651
18	TENSION SPRING	2187370003
19	BOWL COMPLETE LEFT	692367
	RIGHT	692368
20	BELL CRANK	692415
21	CONNECTION EYE	++ 604262

Item	Description	Drawing No.
22	CAP	371389
23	COVER PLATE	2382610002
24	STOPPER	373245
25	HEX NUT DIN 934-M5-8-A3C	703028
26	SPRING RING DIN 127-B 5-A3C	704303
27	HEX BOLT DIN 933-M5x12-8.8-A3C	703564
28	SENSOR BAR (only built in right wheel brake)	*
29	BUSH (only built in right wheel brake)	*
30	ECAS-CONTROL UNIT	*
31	ADDITIONAL ELECTRONIC AIR SUSPENSION *	1361891

\* = not shown

Please order pos. 28, 29 and 30 directly at Wabco!

\*\*\* FOR SAFETY REASONS: SELF-LOCKING NUT AND SCREW WITH CHEMICAL SELF-LOCKING MUST BE USED ONCE. AFTER UNTIGHTEN ALWAYS USE A NEW SPARE.

+ THE CENTRE OF ROTATION OF THE BRAKE LEVER MUST BE FIXED ON THE SAME SIDE AS THE BOLT OF THE AUTO-REVERSE.

++ THE OPEN SIDE OF THE CONNECTION EYE FOR THE BOWDEN CABLE MUST SHOW TO THE CENTRE OF ROTATION OF THE BRAKE LEVER.

THE RETAIL OF INDIVIDUAL BRAKE SHOES IS NOT PERMITTED BY EU DIRECTIVE FROM 1st OF OCTOBER 2002.

ATTENTION: THE SET INCLUDES FOUR BRAKE SHOES AND THE APPENDANT TENSION SPRINGS, PRESSURE SPRINGS AND COVER PLATES.

provided	ETI-No.	changed	Change No.	Reason of the change	Revisions-No.
16.07.07	811522A_en	07.07.2009	FREIGABE		A
		16.04.2012 ÖJ	16740	BOWDEN CABLE CHANGED WAS 1221291	B