

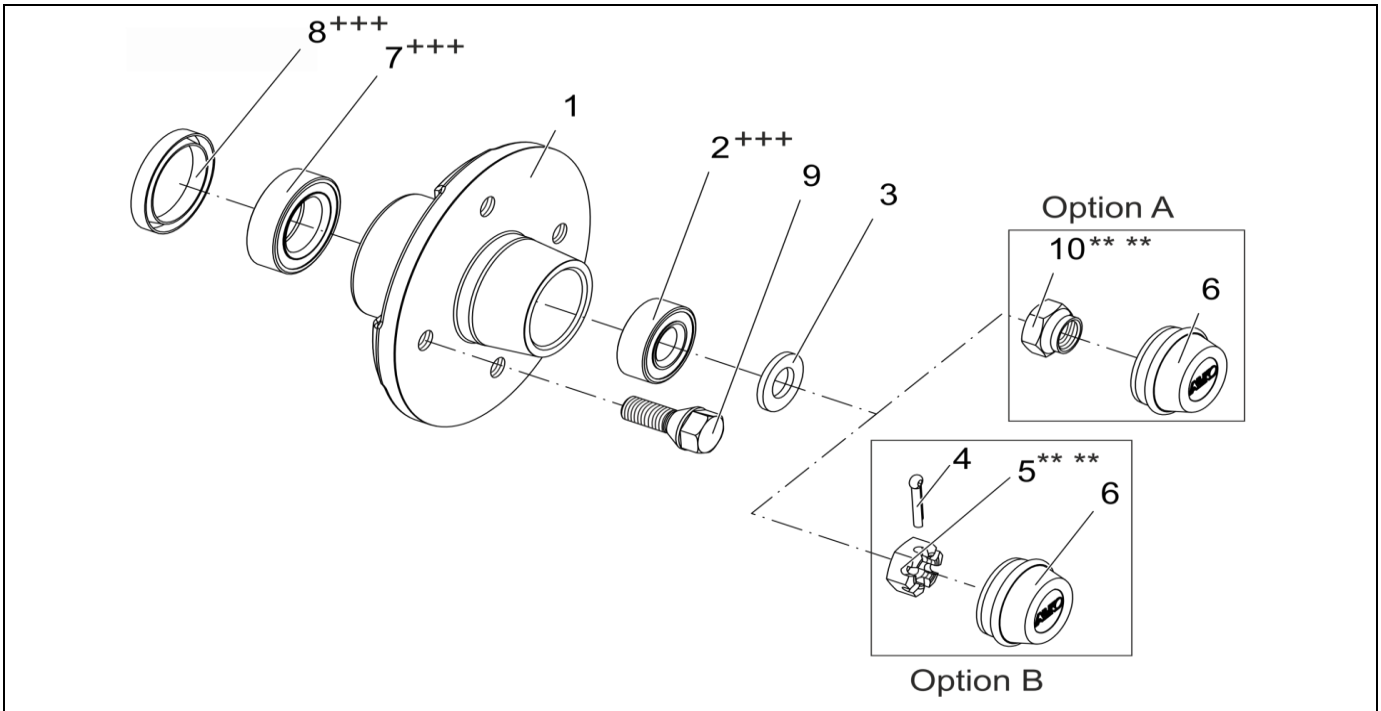
# HUB 250 KG (WHEEL LOAD) AXIS TYPE 400 KG

ETI- No. 811240

(Specify the order with the ETI No.)

**AL-KO**

Spare Parts



| Item | Description                                  | Part No.   |
|------|--|------------|
| 1    | HUB COMPLETE WITH BEARINGS 98X4/M12X1.5      | 1369670    |
|      | 100X4/M12X1.5                                | 1369684    |
|      | WITHOUT BEARINGS 95X4/M12X1.5                | 1540204    |
|      | WITHOUT BEARINGS 108X4/M12X1.5               | 690196     |
| 2    | TAPERED ROLLER BEARING DIN 720-30203 +++     | 700761     |
| 3    | WASHER DIN125-A17-A3C                        | 700625     |
| 4    | SPLINT PIN DIN 94 4X20-VZ                    | 700192     |
|      | SPLINT PIN DIN 94 4X20-A3C                   | 704094     |
| 5    | CASTLE NUT DIN937-M16X1,5 *** **             | 700754     |
| 6    | END CAP Ø40                                  | 2381250003 |
| 7    | TAPERED ROLLER BEARING DIN 720-30205 +++     | 700762     |
| 8    | RADIAL SHAFT SEAL DIN3760-AS 30X52X7-NBR +++ | 700777     |
| 9    | WHEEL BOLT CONUS M12X1.5                     | 2081670018 |
|      | SPHERIC M12x1,5                              | 2081670020 |
| 10   | SELF LOCKING NUT (NON-STANDARD) *** **       | 1312008    |

+++ PLEASE USE MULTI-PURPOSE GREASE ACCORDING TO DIN 51825 KTA 3K FOR GREASING THE BEARING AND RADIAL SEALING

\*\*\* FOR SAFETY REASONS: SELF-LOCKING NUT AND SCREW WITH CHEMICAL SELF-LOCKING MUST BE USED ONCE. AFTER UNTIGHTEN ALWAYS USE A NEW SPARE.

| provided | ETI-No.   | changed       | Change No. | Reason of the change | Revisions-No. |
|----------|-----------|---------------|------------|----------------------|---------------|
| 18.11.97 | 811240_en | 01.10.2010 BB | FREIGABE   |                      | A             |
|          |           | 08.03.2013 ÖJ | 17280      | DESIGN CHANGED       | B             |