

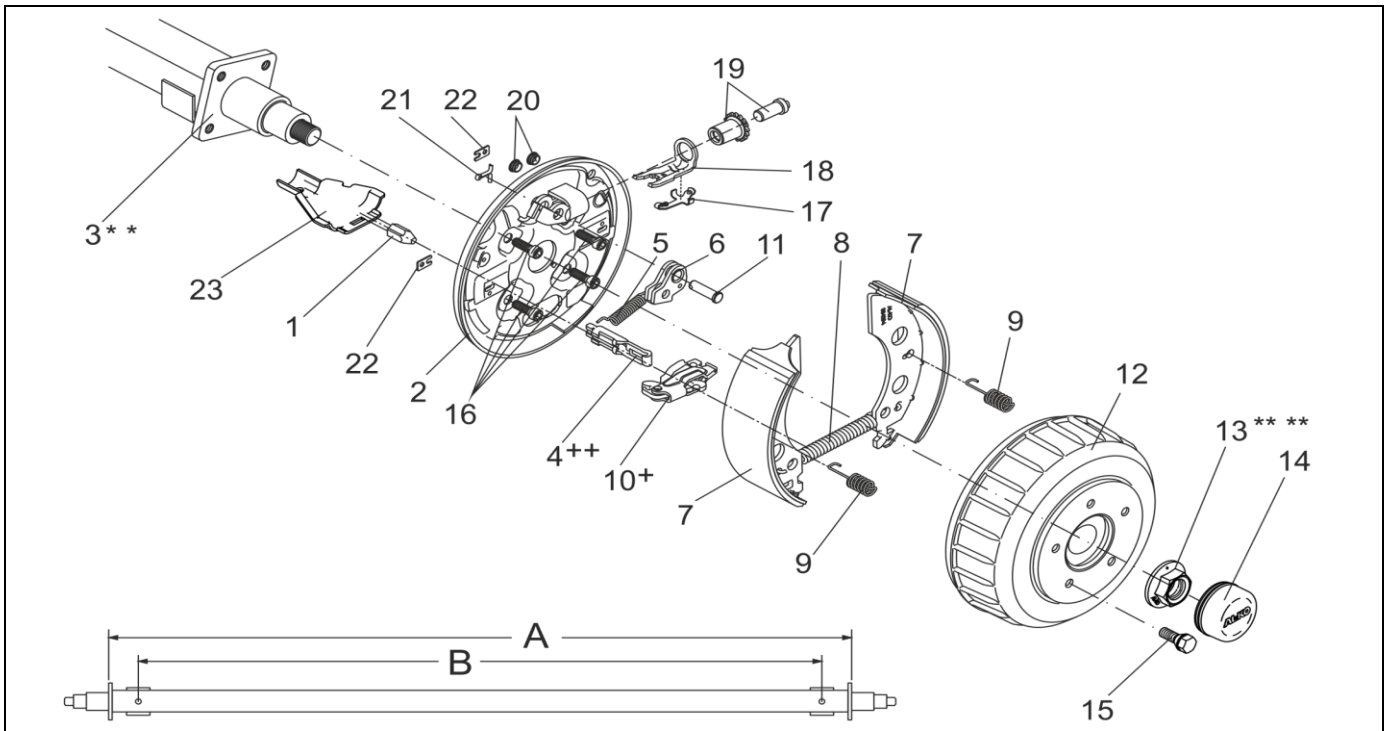
AXLE RIGID BRAKED AUTOMATIC REVER SINGLE AXLE 1500 KG,BOTTOM ASSEMBLY



ETI- No. 811605

(Specify the order with the ETI No.)

Spare Parts



Item	Description	Part No.
1	MOUNTABLE BOWDEN CABLE 350 / 546 LONG	247281
	530 / 726 LONG	247282
	770 / 966 LONG	247283
	890 / 1086 LONG	247284
	1020 / 1216 LONG	247285
	1130 / 1326 LONG	247286
	1320 / 1516 LONG	247287
	1430 / 1626 LONG	247288
	1620 / 1816 LONG	247289
1790 / 1986 LONG	247290	
2	BRAKING PLATE LEFT 2051 A	691048
	RIGHT 2051 A	691049
3	AXLE PIPE WITH STUB	**
4	CONNECTION EYE	++
5	TENSION SPRING	2187370003
6	AUTO-REVERSE LEVER LEFT	571386
	RIGHT	571387
7	SET BRAKE JAW FOR AXLE INCL (COVER PLATE, TENSION SPRING, PRESSURE SPRING)	1213889
8	TENSION SPRING	2082000007
9	PRESSURE SPRING	2088800003
10	SPREAD HINGE LOCK 2051	+
11	BEARING BOLT	368651

Item	Description	Part No.
12	BRAKE DRUM COMPLETE WITH BEARINGS Ø112X5 M12X1.5 UP TO 750KG	586450
	SPARE PARTS SET: 1X BEARING, 1X CIRCLIP, 1X FLANGE NUT	1224803
13	FLANGE NUT M24X1.5 *** **	581200
14	END CAP Ø57	581197
15	WHEEL BOLT SPHERIC M12x1,5	2081670020
	CONUS M12X1.5	2081670018
16	CYLINDER BOLT WITH HEXAGON SOCKET DIN 6912-M12X30-8.8-A3C	705673
17	COMPOUND SPRING	368405
18	BOW PRESSURE	368361
19	ADJUSTING SCREW AND THE ADJUSTING NUT	21873708
20	STOPPER	373245
21	SPLINT PIN DIN 94 4X20-VZ	700192
22	COVER PLATE	2382610002
23	CUP	371387

+ THE CENTRE OF ROTATION OF THE BRAKE LEVER MUST BE FIXED ON THE SAME SIDE AS THE BOLT OF THE AUTO-REVERSE.
 ++ THE OPEN SIDE OF THE CONNECTION EYE FOR THE BOWDEN CABLE MUST SHOW TO THE CENTRE OF ROTATION OF THE BRAKE LEVER.

** WHEN ORDERING PLEASE INDICATE SIZE A AND B!

*** FOR SAFETY REASONS: SELF-LOCKING NUT AND SCREW WITH CHEMICAL SELF-LOCKING MUST BE USED ONCE.
 AFTER UNTIGHTEN ALWAYS USE A NEW SPARE.

THE RETAIL OF INDIVIDUAL BRAKE SHOES IS NOT PERMITTED BY EU DIRECTIVE FROM 1st OF OCTOBER 2002.

ATTENTION: THE SET INCLUDES FOUR BRAKE SHOES AND THE APPENDANT TENSION SPRINGS, PRESSURE SPRINGS AND COVER PLATES.

provided	ETI-No.	changed	Change No.	Reason of the change	Revisions-No.
26.07.20120J	811605_en		FREIGABE		A