

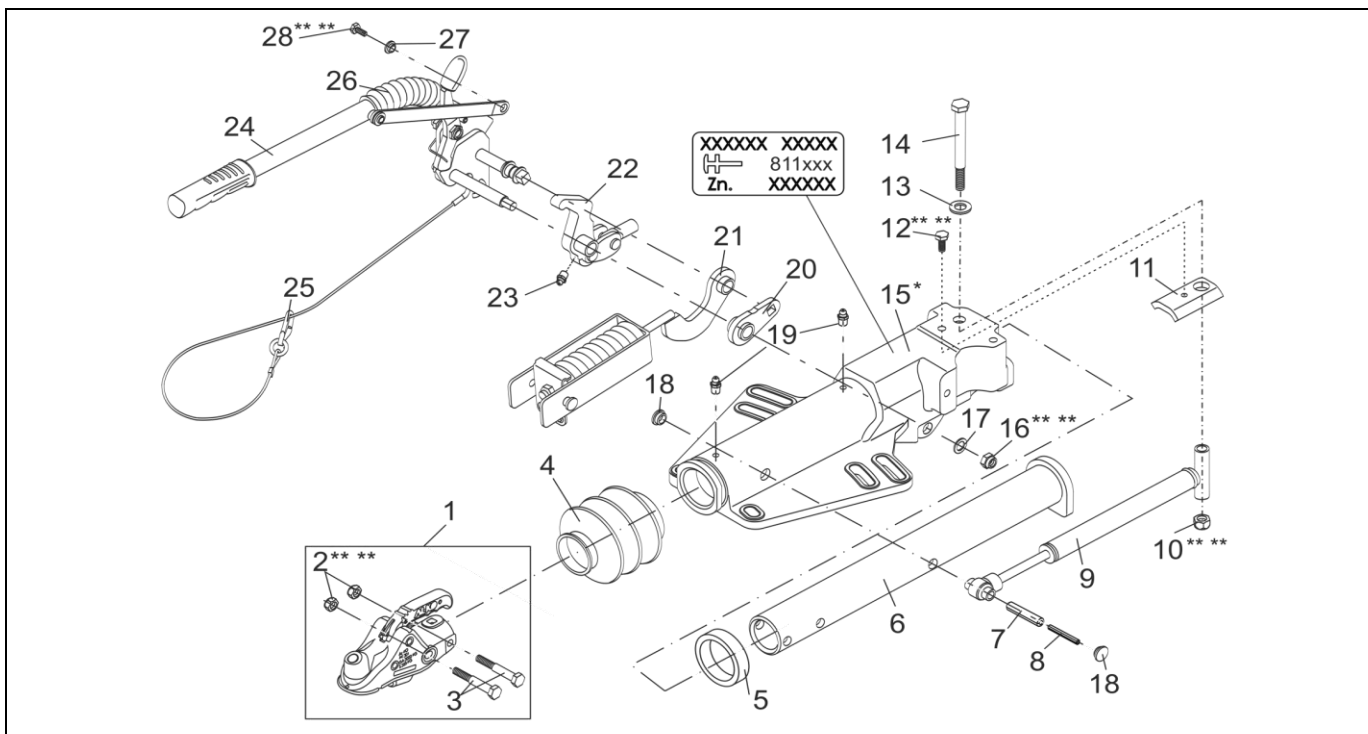
OVERRUN DEVICE PROFI V 3500 HAND BRAKE LEVER LOWERED

ETI- No. 811593

(Specify the order with the ETI No.)

AL-KO

Spare Parts



Item	Description	Part No.
1	COUPLING AK 351 INCL. (POS.2,3)	1224391
2	HEX NUT DIN 985-M16-8.8-A3C ***	704089
3	HEX BOLT DIN 931-M16X100-8.8-A3C	703548
4	BELLOWS	21726605
5	PROFILE RING	2172660003
6	DRAW TUBE	692267
7	CLAMPING PIN DIN 1481-14X55	702371
8	CLAMPING PIN DIN 1481-8X55	702369
9	SHOCK ABSORBER	1217090
10	HEX NUT DIN 985-M14-10-A3C ***	701568
11	END STOP PLATE	692278
12	HEX BOLT DIN 933-M10X20-8.8-A3C ***	706090
13	WASHER DIN125-A15-ST-A3C	703435
14	HEX BOLT DIN 931-M14X140-8.8-A3C	705554
15	HOUSING	*
16	HEX NUT DIN 985-M12-10-A3C ***	702750

Item	Description	Part No.
17	WASHER DIN125-A13-A3C	700140
18	STOPPER	372416
19	GREASE NIPPLE CONUS DIN 71412-AS 8X1	700204
20	LEVER	692687
21	SPRING CLIP	692648
22	BELL CRANK (INCL. POS. 23) iH = 90/30	692268
	iH = 90/33.5	692723
23	GREASE NIPPLE CONUS DIN 71412-AS 6X1	700203
24	HAND BRAKE LEVER LOWERED (INCL. POS. 25)	693064
25	BRAKE AWAY CALBE	209385
26	ET-SET BELLOWS	1225358
27	BUSH	692645
28	HEX BOLT DIN 933-M8X16-8.8-A3C ***	706089

* ONLY COMPLETE OVERRUN DEVICE AVAILABLE, SEE IMPRINT ZN.-NR.

*** FOR SAFETY REASONS: SELF-LOCKING NUT AND SCREW WITH CHEMICAL SELF-LOCKING MUST BE USED ONCE. AFTER UNTIGHTEN ALWAYS USE A NEW SPARE.

provided	ETI-No.	changed	Change No.	Reason of the change	Revisions-No.
12.06.12 ÖJ	811593_en		FREIGABE		A
		22.05.13/ÖJ	17399	Pos.12 was 703571, Pos.28 was 703570	B