

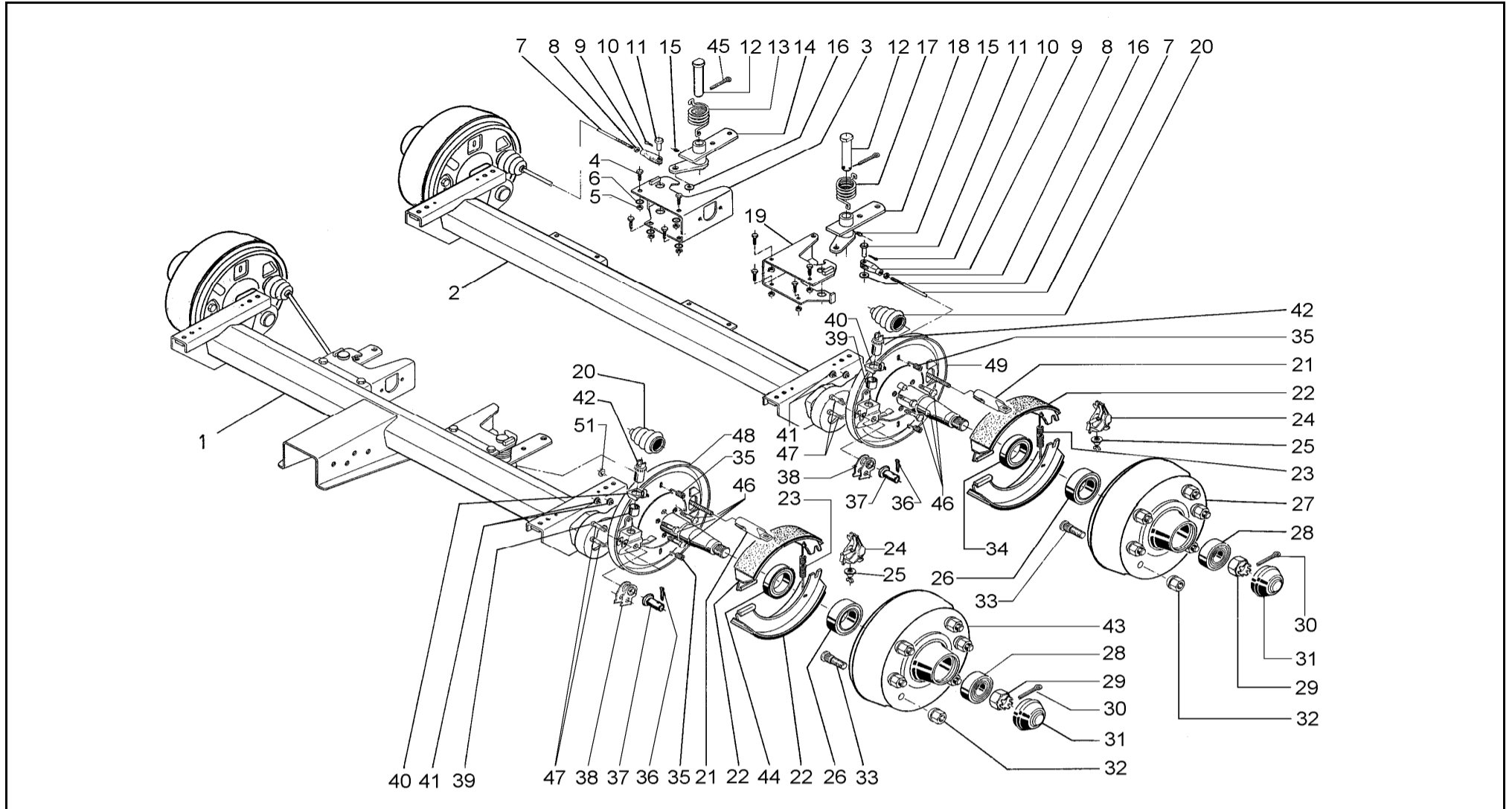
# AXLE GU LNGS GBR TA 5000

ETI- No. 811512

(Specify the order with the ETI No.)

**AL-KO**

Spare Parts



Item	Description	Drawing No.
1	AXLE 1	WITHOUT ABH*
2	AXLE 2	WITH ABH*
3	PANEL RIGHT WELDED	1313796
4	NUT BOLT M12-X30 DIN 933-8.8 A3C	701987
5	NUT HEX M12 DIN 985-10 A3C	702750
6	WASHER A13 DIN 125	700140
7	CONNECTION ROD Ø 10	INDICATE LENGTH
8	NUT HEX M10 DIN 934-8 A3C	700109
9	FORK HEAD 10x40 A3C	700739
10	SPLINT 3,2x20 DIN 94 A3C	702004
11	BOLT B10 DIN A3C DIN 1444	702795
12	BOLT	1312391
13	ROTATION SPRING RIGHT	358268
14	BRAKE LEVER RIGHT WELDED	1312396
15	GREASE NIPPLE AS 6 DIN 71412	700203
16	WASHER A10,5 DIN 125 A3C	700139
17	ROTATION SPRING LEFT	358267
18	BRAKE LEVER LEFT WELDED	1312395
19	PANEL LEFT WELDED	1313795
20	BELLOWS	358257
21	CONNECTION EYE	358266
22	SET BRAKE JAW	1220334
23	RETURN SPRING LEFT	2589250004
	RETURN SPRING RIGHT	355833
24	SPREAD LOCK CPL. LEFT (POS 23+24)	692432
	SPREAD LOCK CPL. RIGHT (POS 23+24)	692433
25	ADJUSTING WHEEL MONT. LEFT	682324
	ADJUSTING WHEEL MONT. RIGHT	692325

Item	Description	Drawing No.
26	TAPERED ROLLER BEARING 30211 DIN 720	701774
27	BRAKE DRUM CPL. 3062 ABH	1302421
28	TAPERED ROLLER BEARING 32008X DIN 720	702125
29	CASTELLATED NUT M33x1,5	701277
30	SPLINT 6,3x63 DIN 94	700856
31	END CAP	368527
32	NUT COLLAR SPHERIC	701202
33	WHEEL BOLT	2487940005
34	LIP SEAL ABH	702126
35	COMPRESSION SPRING	2781960004
36	SPLINT 4x25 DIN 94	700193
37	BEARING BOLT	704642
38	LOCKING LEVER CPL.	690613
39	BUSH	368535
40	TAB WASHER	358259
41	LUPOLEN-STOPPER 10x13x11	373245
42	ADJUSTING NUT CPL. WITH ADJUSTING BOLT	646155
43	BRAKE DRUM 3062	1302420
44	LIP SEAL	358893
45	SPLINT 6,3x36 DIN 94	700197
46	BOLT HEX M12x25 8.8 DIN 94	701958
47	CYLINDER BOLT M8x18 8.8 DIN 912	704800
48	BRAKING PLATE ZINCED LEFT	692428
	BRAKING PLATE ZINCED RIGHT	692429
49	BRAKING PLATE ZINCED LEFT	692424
	BRAKING PLATE ZINCED RIGHT	692425
51	STOPPER	357228

\* ABH = AUTOMATIC BLOCK HAMPER

THE PRESSURE AIR-BRAKE INSTALLATION AND THE PARTS OF THE AUTOMATIC BLOCK HAMPER (ABH) ARE NOT INCLUDED IN DELIVERY FROM AL-KO. ORDER THESE PARTS AT THE ASSEMBLING PRODUCER!

THE RETAIL SALE OF BRAKE JAWS IS NOT PERMISSIBLE BY EU DIRECTIVE FROM 01. OCT 2002!

ATTENTION: POS 23, 35 ODDLY ORDERABLE OR IN SET BRAKE JAW 1220334 CONTAINED!

provided	ETI-No.	changed	Change No.	Reason of the change	Revisions-No.
14.11.06	811512_en	16.09.2010 BB	FREIGABE		A