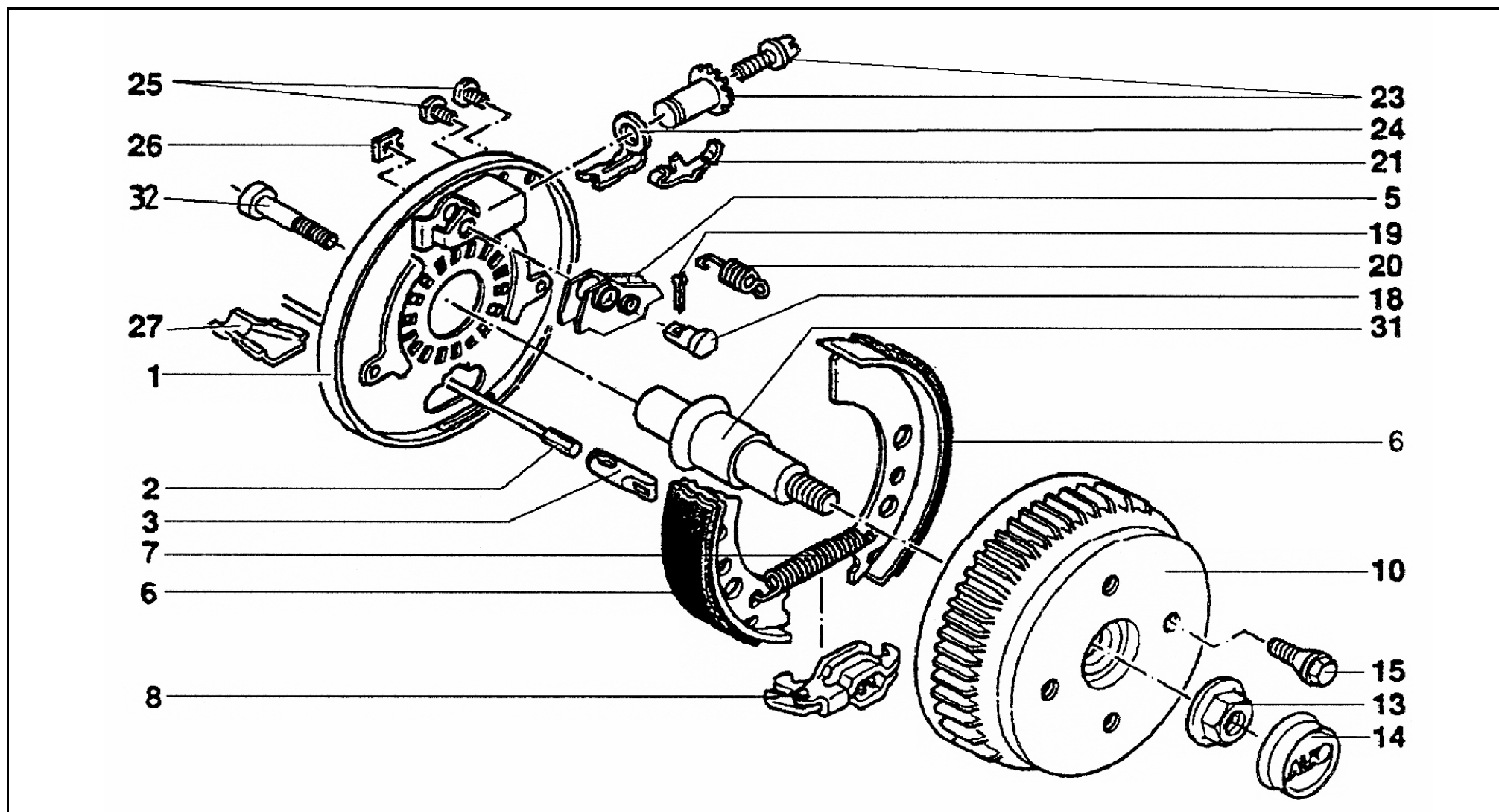


# WHEEL BRAKE 1637 AR EURO COMPACT TILL 500KG

ETI- No. 811307

(Specify the order with the ETI No.)

**AL-KO**  
Spare Parts



Item	Description	Drawing No.
1	BRAKING PLATE WELDED LEFT	571950
	BRAKING PLATE WELDED RIGHT	571951
2	BOWDEN CABLE HANGABLE	350 247281
		530 247282
		770 247283
		890 247284
		1020 247285
		1130 247286
		1320 247287
		1430 247288
1620 247289		
1790 247290		
3	CONNECTION EYE	604262
5	LOCKING LEVER CPL.	386905
6	BRAKE JAW LEFT	384481
7	TENSION SPRING	2182150003
8	SPREAD HINGE LOCK	570666
10	BRAKE DRUM CPL.	
	98x4/M12x1,5	623748
	100x4/M12x1,5	623749
	112x5/M12x1,5	623750
13	ET-SET: BEARING-CIRCLIP-FLANGE NUT	1224800
13	FLANGE NUT	581200

Item	Description	Drawing No.
14	CAP	581197
15	WHEEL BOLT	CONUS M12x1,5 2081670018
		SPHERIC M12x1,5 2081670020
		SPHERIC M12x1,5 (R13) 372138
16	BRAKE JAW RIGHT	384296
18	BEARING BOLT	368651
19	SPLINT 4x20 DIN 94	700192
20	COMPRESSION SPRING	2088800003
21	FLAT SPRING	581879
22	ADJUSTING BOLT AND	21873708
23	ADJUSTING NUT	
24	COMPRESSION BINDER	581878
25	STOPPER 10x13x11	373245
26	COVER PLATE	2382610002
27	BOWL	371387
31	STUB AXLE FOR STABLE SWINGARM TILL 1000KG	605566
32	BOLT CYLINDER WITH BOLT HEX	704096

THE RETAIL SALE OF BRAKE JAWS ISN OT PERMISSIBLE BY EU DIRECTIVE FROM 01. OCT 2002!

ATTENTION: POS 7, 20, 26 ODDLY ORDERABLE OR IN SET BRAKE JAW 1213888 CONTAINED!

provided	ETI-No.	changed	Change No.	Reason of the change	Revisions-No.
03.05.00	811307_en	18.02.2010	FREIGABE		A
		14.02.2011 HI	16422	SEE CHANGE NOTICE	B