

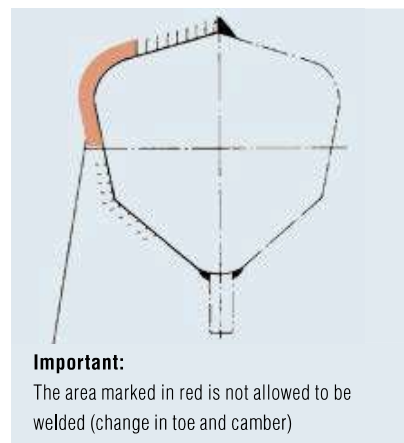
WELDED/BOLTED CONNECTIONS

for axles

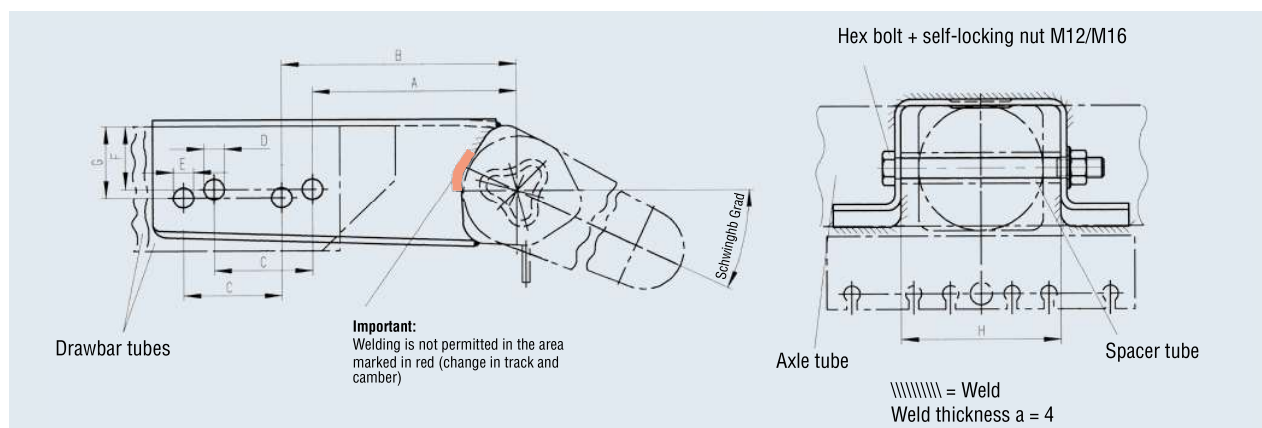
TECHNOLOGY

Assembly:

1. The top hat profile can be welded on at the manufacturing plant if requested
2. Cut off the drawbar section (as required)
3. Drill two holes in the drawbar section.
AL-KO drawbar tubes come with a hole with a spacer tube as standard.
If using welded/bolted connections, it is additionally necessary to drill a hole with a spacer tube.
With Ø tube drawbars – drill through
4. Weld on spacer tubes in the middle
5. Bolt on spacer tubes with hex bolt and self-locking nut, tightening torque 75 Nm with M 12; tightening torque 195 Nm with M 16



AL-KO hexagonal rubber suspension axle version



SAP: SCHWEISSSCHRAUBVERBG PR 97 5GR SHST

Part no.	Weight range		Axle profile	Swing arm		Drawbar section	
	Single axle kg	Tandem kg		Standard degrees	Special degrees	Round Ø	Rectangular ☐ width
AL-KO hexagonal rubber suspension axles							
242 725	750		71	30°		70 & 88.9	70 & 80
243 108	750		71		5°	70 & 88.9	70 & 80
1 211 600	1,600	2,500	97		5°	70 & 88.9	70 & 80
1 211 601		3,000	97		5°		100 & 120
243 105	1,800	3,500	110	25°		88.9	100 & 120
243 107	1,800	3,500	110		5°	88.9	100 & 120
240 133	2,500	3,500	120	20°		88.9	100 & 120
242 724	2,500	3,500	120		5°	88.9	100 & 120
Steel spring axles							
240 134	3,500		Ø 114	20°			100 & 120



SCOPE OF DELIVERY

(see technical drawing) including:

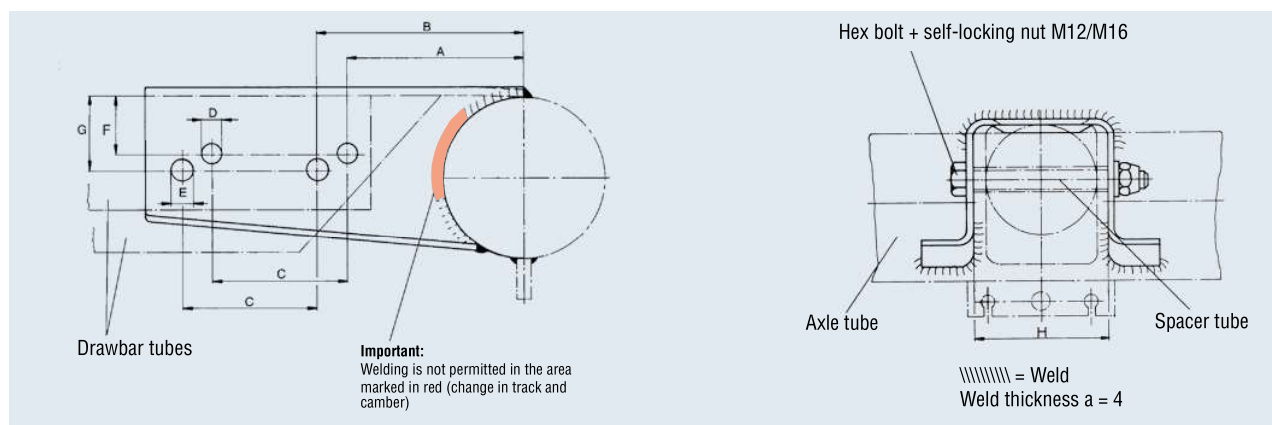
- || Fixing bolts
- || With drawbar sections (height-adjustable), the spacer tubes are supplied with the drawbar sections
- || Welding instructions part no. 604038

SURFACE TREATMENT

- || Synthetic resin dip-coating black

4

Steel spring axle version



Dimensions (mm)											Part no.* Spacer tube
A	B	C	D	E	F	G	H				
175	190	80	12.5	12.5	36	45	90	1.8	—	70	365 472
175	190	80	12.5	12.5	36	45	90	1.8	—	70	365 472
175	190	80	12.5	12.5	36	45	90	2.6	—	50	365 472
165	190	80	16.5	16.5	51	58	130	2.8	—	50	—
160	190	80	16.5	16.5	45	58	130	2.8	—	40	372 879
160	190	80	16.5	16.5	45	58	130	2.8	—	40	372 879
160	190	80	16.5	16.5	45	58	130	2.8	—	40	372 879
160	190	80	16.5	16.5	45	58	130	2.8	—	40	372 879
—	190	80	—	16.5	—	58	130	3.5	—	40	—

*Important: If using Ø-drawbars, order 2x spacer tubes as well