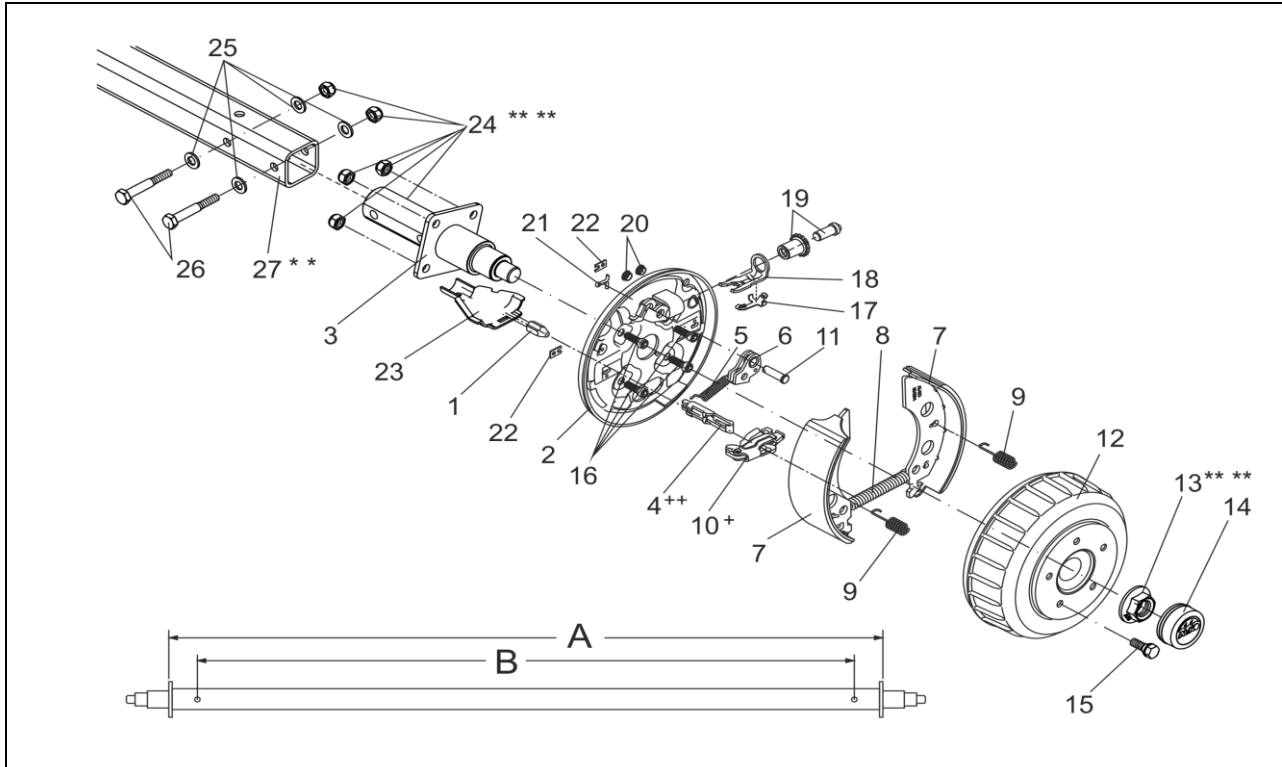


**AXLE RIGID BRAKED AUTOMATIC REVER 2361 EA WATERPROOF 1800 KG, TOP ASSEMBLY**

ETI- No. 811732

(Specify the order with the ETI No.)

**AL-KO**  
Spare Parts



Item	Description	Part No.
1	MOUNTABLE BOWDEN CABLE 350 / 546 LONG	247281
	530 / 726 LONG	247282
	770 / 966 LONG	247283
	890 / 1086 LONG	247284
	1020 / 1216 LONG	247285
	1130 / 1326 LONG	247286
	1320 / 1516 LONG	247287
	1430 / 1626 LONG	247288
	1620 / 1816 LONG	247289
	1790 / 1986 LONG	247290
2	BRAKING PLATE LEFT 2361 Ab	690721
	RIGHT 2361 Ab	690722
3	AXLE PIPE WITH STUB RIGTH	1369194
	LEFT	1369193
4	CONNECTION EYE ++	604262
5	TENSION SPRING	2187370003
6	AUTO-REVERSE LEVER LEFT	571386
	RIGHT	571387
7	SET BRAKE JAW FOR AXLE INCL (COVER PLATE, TENSION SPRING, PRESSURE SPRING)	1213890
8	TENSION SPRING	2082000007
9	PRESSURE SPRING	2088800003
10	SPREAD HINGE LOCK 2051 +	571510
11	BEARING BOLT	368651

Item	Description	Part No.
12	BRAKE DRUM COMPLETE WITH BEARINGS Ø112X5 M12X1.5 WATERPROOF UP TO 900KG	1337624
	SPARE PARTS SET: 1X BEARING, 1X CIRCLIP, 1X FLANGE NUT	1224806
13	FLANGE NUT M27X2 ***	582506
14	END CAP WATER RESISTANT Ø65	1337300
15	WHEEL BOLT SPHERIC M12x1,5	2081670020
	CONUS M12X1.5	2081670018
16	CYLINDER BOLT WITH HEXAGON SOCKET DIN 6912-M12X30-8.8-ZN8DISP	706315
17	COMPOUND SPRING	368405
18	BOW PRESSURE	368361
19	ADJUSTING SCREW AND THE ADJUSTING NUT	21873708
20	STOPPER	373245
21	SPLINT PIN DIN 94 4X20-VZ	700192
22	COVER PLATE	2382610002
23	CUP	371387
24	HEX NUT DIN 985-M12-10-ZN8DISP ***	705526
25	WASHER DIN125-A13-ZN8DISP	705397
26	HEX BOLT DIN 931-M12X90-10.9-ZN8DISP	706080
27	AXIS PROFILE SQUARE 70X70	**

+ THE CENTRE OF ROTATION OF THE BRAKE LEVER MUST BE FIXED ON THE SAME SIDE AS THE BOLT OF THE AUTO-REVERSE.  
 ++ THE OPEN SIDE OF THE CONNECTION EYE FOR THE BOWDEN CABLE MUST SHOW TO THE CENTRE OF ROTATION OF THE BRAKE LEVER.  
 \*\* WHEN ORDERING PLEASE INDICATE SIZE A AND B!  
 \*\*\* FOR SAFETY REASONS: SELF-LOCKING NUT AND SCREW WITH CHEMICAL SELF-LOCKING MUST BE USED ONCE. AFTER UNTIGHTEN ALWAYS USE A NEW SPARE.

THE RETAIL OF INDIVIDUAL BRAKE SHOES IS NOT PERMITTED BY EU DIRECTIVE FROM 1st OF OCTOBER 2002.  
 ATTENTION: THE SET INCLUDES FOUR BRAKE SHOES AND THE APPENDANT TENSION SPRINGS, PRESSURE SPRINGS AND COVER PLATES.

provided	ETI-No.	changed	Change No.	Reason of the change	Revisions-No.
01.07.15/GJ	811732_en		FREIGABE		A