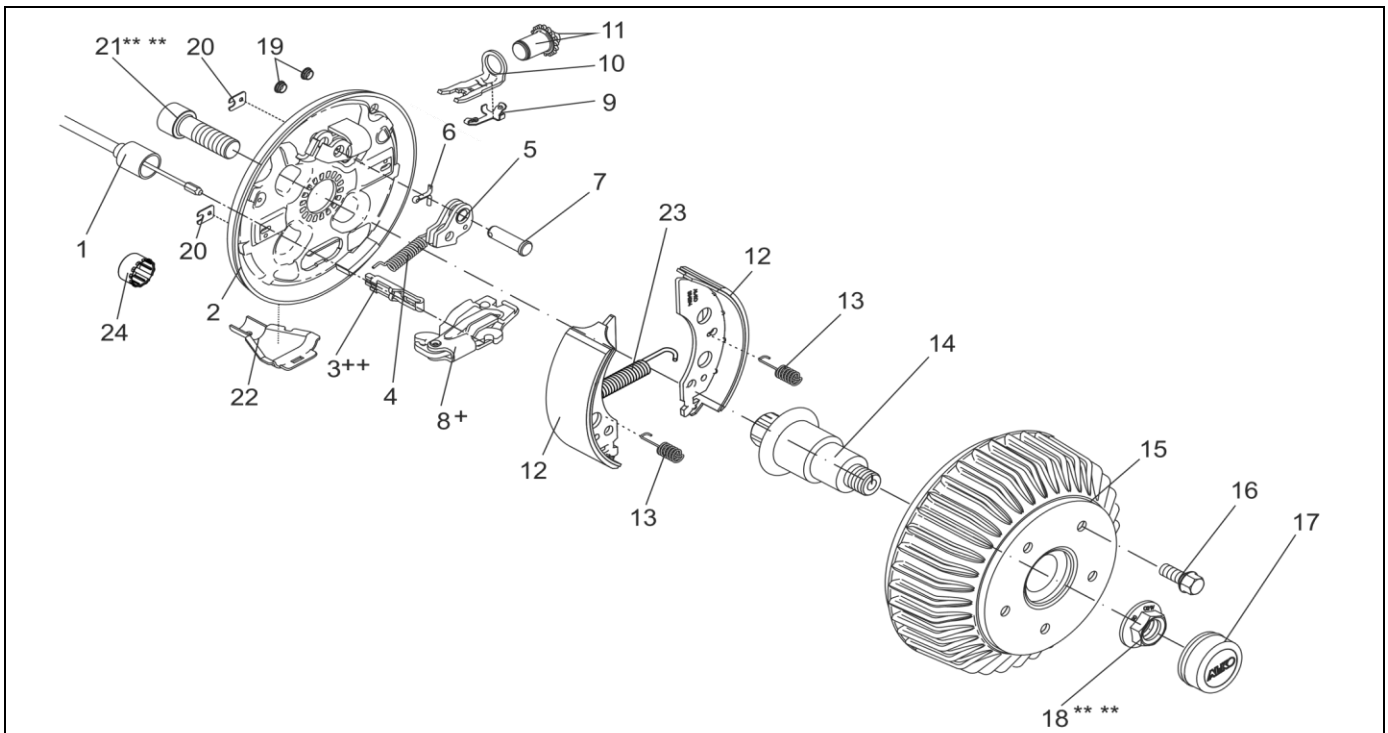


# WHEEL BRAKE EURO-COMPACT 2051Aa 650/675 KG BEARING UNIT

ETI- No. 811157

(Specify the order with the ETI No.)

**AL-KO**  
Spare Parts



Item	Description	Part No.
1	MOUNTABLE BOWDEN CABLE 350 / 546 LONG	247281
	530 / 726 LONG	247282
	770 / 966 LONG	247283
	890 / 1086 LONG	247284
	1020 / 1216 LONG	247285
	1130 / 1326 LONG	247286
	1320 / 1516 LONG	247287
	1430 / 1626 LONG	247288
	1620 / 1816 LONG	247289
	1790 / 1986 LONG	247290
2	BRAKING PLATE LEFT 2051 A	571376
	RIGHT 2051 A	571377
3	CONNECTION EYE ++	604262
4	TENSION SPRING	2187370003
5	AUTO-REVERSE LEVER LEFT	571386
	RIGHT	571387
6	SPLINT PIN DIN 94 4X20-VZ	700192
7	BEARING BOLT	368651
8	SPREAD HINGE LOCK 2051 +	571510
9	COMPOUND SPRING	368405
10	BOW PRESSURE	368361
11	ADJUSTING SCREW AND THE ADJUSTING NUT	21873708
12	SET BRAKE JAW FOR AXLE INCL (COVER PLATE,TENSION SPRING,PRESSURE SPRING)	1213889

Item	Description	Part No.
13	PRESSURE SPRING	2088800003
14	STUB AXLE 2051	605119
15	BRAKE DRUM COMPLETE WITH BEARINGS Ø112X5 M12X1.5	623113
	Ø100X4 M12X1.5	623112
	Ø98X4 M12X1.5	623111
	SPARE PARTS SET: 1X BEARING, 1X CIRCLIP, 1X FLANGE NUT	1224801
16	WHEEL BOLT SPHERIC M12x1,5 CONUS M12X1.5	2081670020
	SPHERIC M12X1.5 (R13)	2081670018
		372138
17	END CAP Ø57	581197
18	FLANGE NUT M24X1.5 *** **	581200
19	STOPPER	373245
20	COVER PLATE	2382610002
21	CYLINDER BOLT WITH HEXAGON SOCKET DIN 912-M20X60 *** **	704096
22	CUP	371387
23	TENSION SPRING	2082000007
24	PROTECTIVE CAP	371389

+ THE CENTRE OF ROTATION OF THE BRAKE LEVER MUST BE FIXED ON THE SAME SIDE AS THE BOLT OF THE AUTO-REVERSE.  
 ++ THE OPEN SIDE OF THE CONNECTION EYE FOR THE BOWDEN CABLE MUST SHOW TO THE CENTRE OF ROTATION OF THE BRAKE LEVER.  
 \*\*\* FOR SAFETY REASONS: SELF-LOCKING NUT AND SCREW WITH CHEMICAL SELF-LOCKING MUST BE USED ONCE.  
 AFTER UNTIGHTEN ALWAYS USE A NEW SPARE.

THE RETAIL OF INDIVIDUAL BRAKE SHOES IS NOT PERMITTED BY EU DIRECTIVE FROM 1st OF OCTOBER 2002.  
 ATTENTION: THE SET INCLUDES FOUR BRAKE SHOES AND THE APPENDANT TENSION SPRINGS, PRESSURE SPRINGS AND COVER PLATES.

provided	ETI-No.	changed	Change No.	Reason of the change	Revisions-No.
16.04.96	811157_en		FREIGABE		A
		02.02.2011/HI	16244	SEE CHANGE	B
		07.01.2013/ÖJ	17280	DESIGN	C